




7. Level 2 Repair





7-1. Pre-requisite

<p>Tweezers / Disass'y Stick / Screw Driver</p>	<p>Anti-statoc Gloves</p>
<p>OCTA Disassembly Holder</p>	<p>Anti-static Mat</p>
<p>Acryl Jig Rework Form</p>	<p>Glass Absorbers (2ea)</p>
<p>Tape Rework Form</p>	<p>Mobile Dryer</p>

7-2. Parts which must be changed after repair

<p>OCTA Form Tape</p>	
<p>Bracket Cu Tape</p>	
<p>Touch Key Top Tape</p>	

7-3. Disassembly

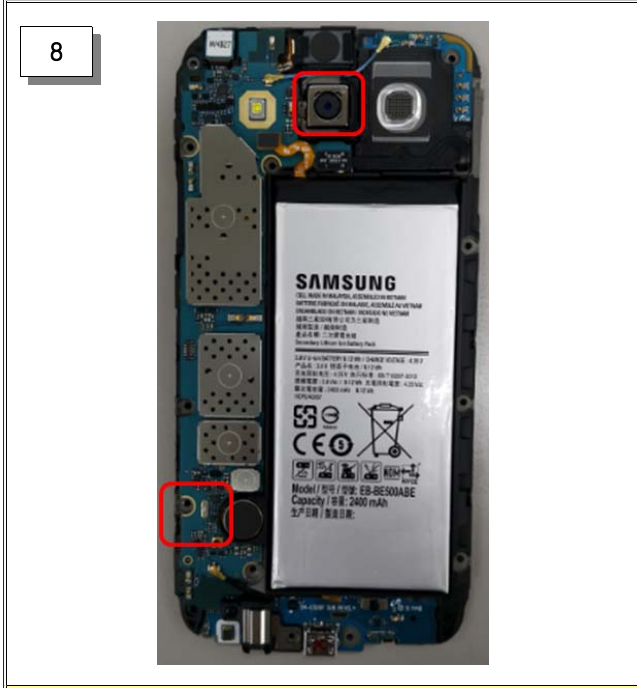
<p style="text-align: center;">1</p>  <div style="border: 2px solid red; padding: 5px; text-align: center; margin-top: 10px;"> <p>Temperature : 70 ± 10 ° C</p> </div>	<p style="text-align: center;">2</p> 
<p>1) After heating for 10 minutes the device at 70~80°C, take out the device from Mobile dryer.</p>	<p>1) Detach the Bracket CU tape care fully from the OCTA Cu sheet using Glass absorber and holder. 2) Be careful not to separate LCD from TSP.</p>
<p style="text-align: center;">3</p> 	<p style="text-align: center;">4</p> 
<p>1) Disassemble loosen 14 Point of Bracket</p>	<p>1) Disassemble/Detach Bracket and REAR</p>



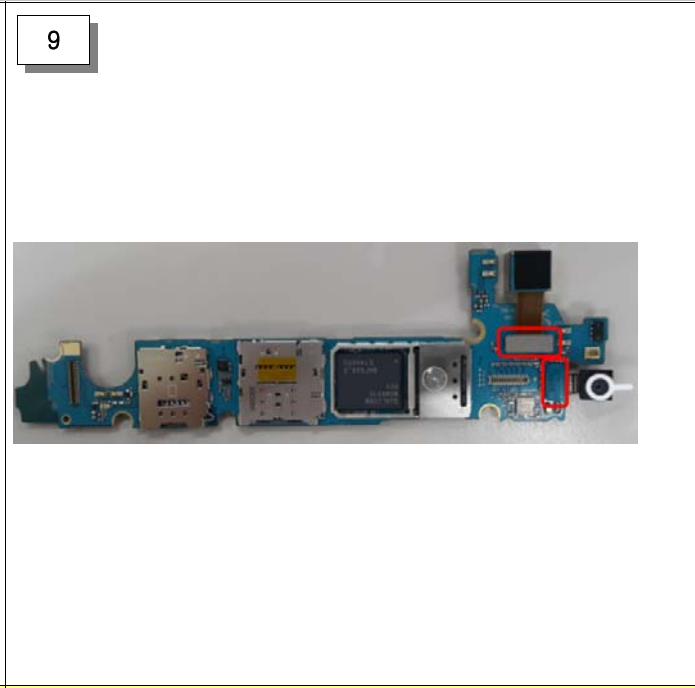
1) Loosen a Screw in PBA Ass'y



1) Detach Connector and Coaxial Cable from PBA



1) Detach the PBA from bottom REAR
2) Be careful not to damage



1) Detach Main and Sub Camera on PBA

10







1) Detach the Receiver, Speaker, Coaxial Cable and Battery

11



1) Detach lower Sub PBA from Bracket
2) Be careful not to Damage

7-4. Assembly

<p>1</p> 	<p>2</p> 
<p>1) Assemble lower Sub PBA on Bracket</p>	<p>1) Assemble the Upper/Lower SUB PBA and Coaxial Cable, RCV, Speaker, Battery</p>
<p>3</p> 	<p>4</p> 
<p>1) Attach Battery on Bracket 2) Press Battery using Battery Pressing JIG.</p>	<p>1) Attach Main and Sub Camera on PBA</p>



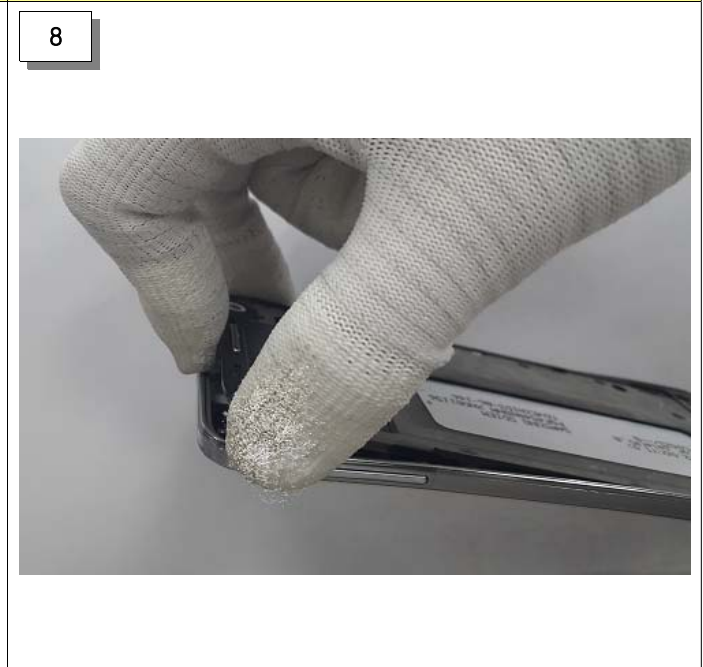
1) Assemble PBA on Bracket
2) Assemble lower Sub PBA and Main PBA



1) Assemble Connector on the PBA Assy
2) Assemble Coaxial Cable



1) Tighten a screw



1) Assemble PBA ass'y and REAR

<p>9</p> 	<p>10</p> 
<p>1) Tighten screw the 14 point</p>	<p>1) Assemble LCD Connector 2) Attach LCD and REAR ass'y</p>
<p>11</p> 	
<p>1) Press OCTA Window using Window pressing JIG.</p>	