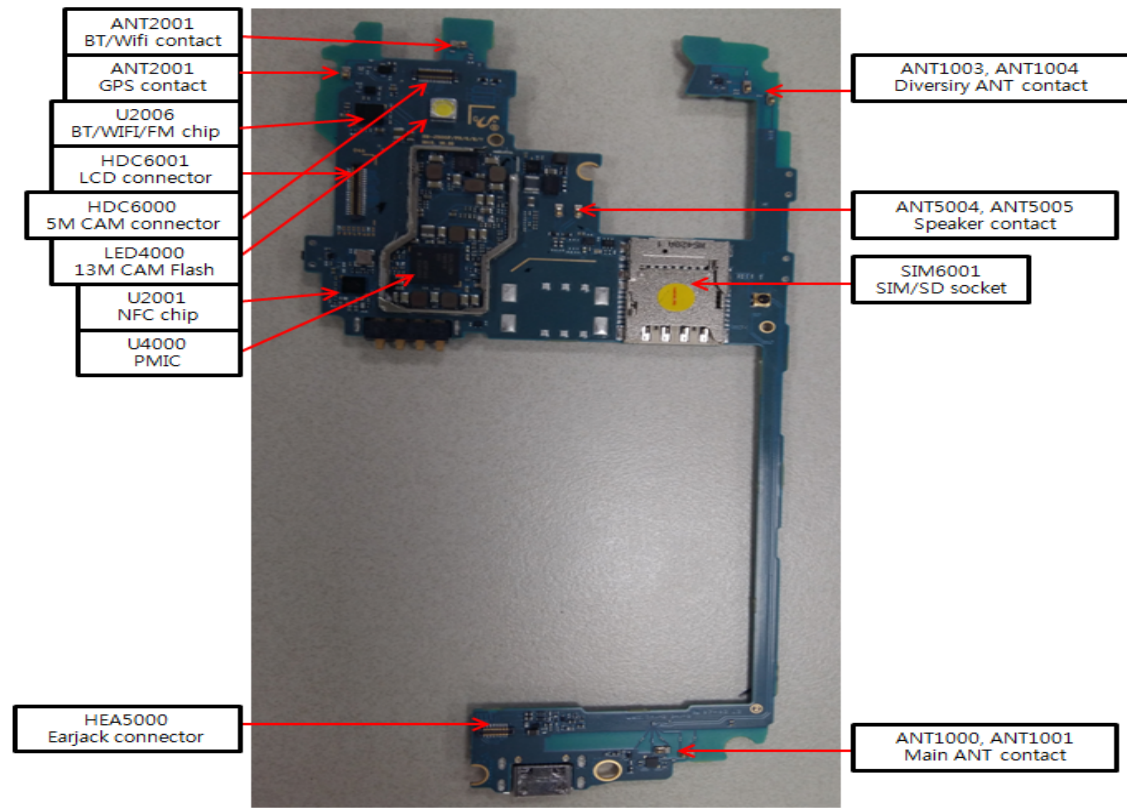
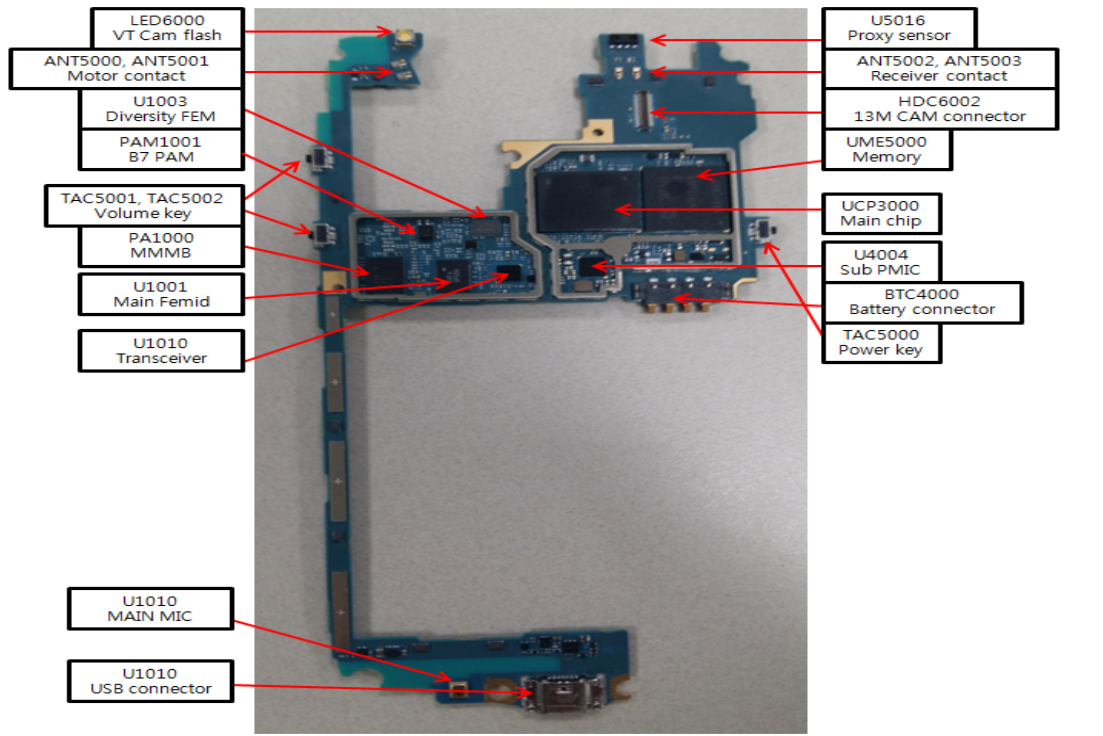
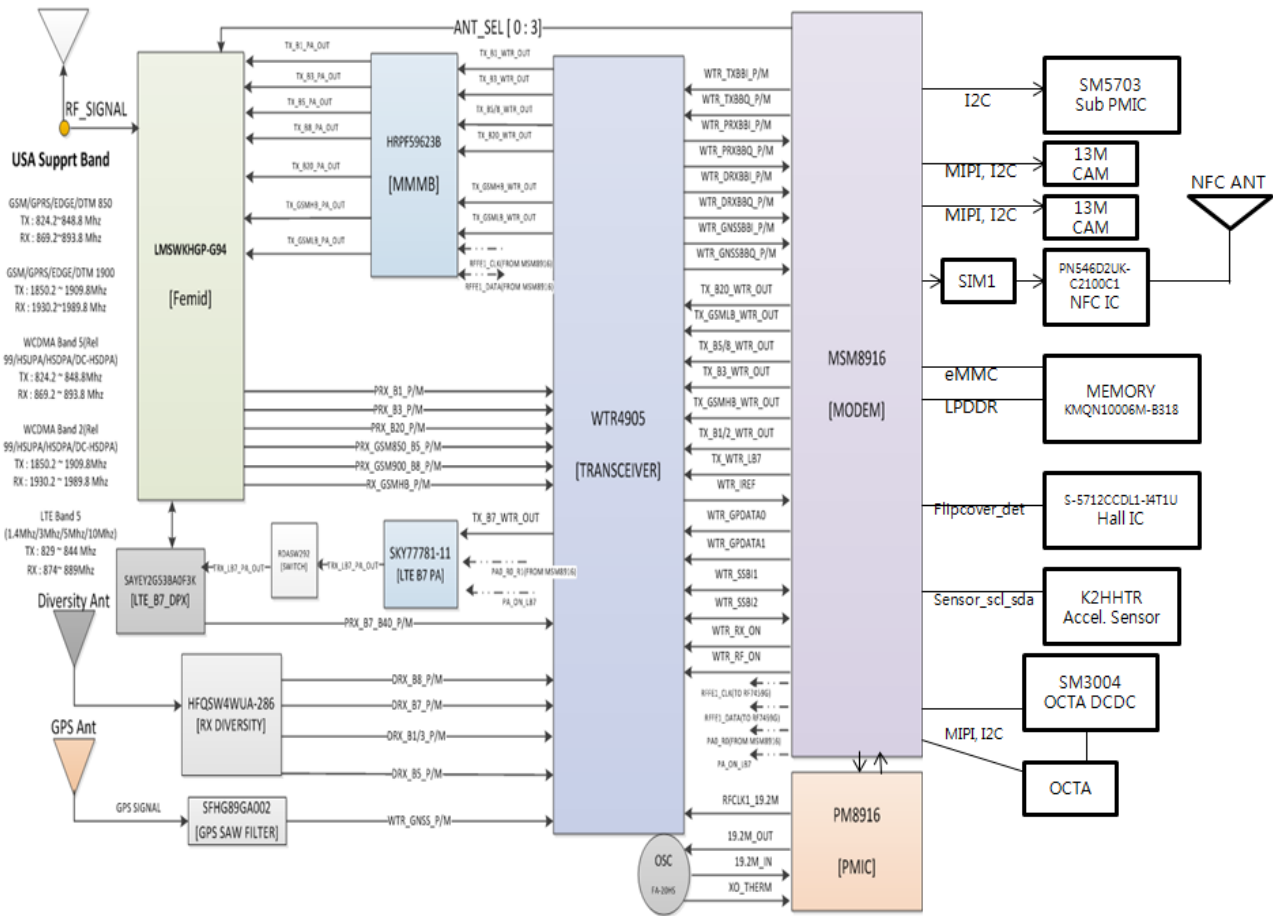


8. Level 3 Repair

8-1. Components Layout



8-2. Block Diagram

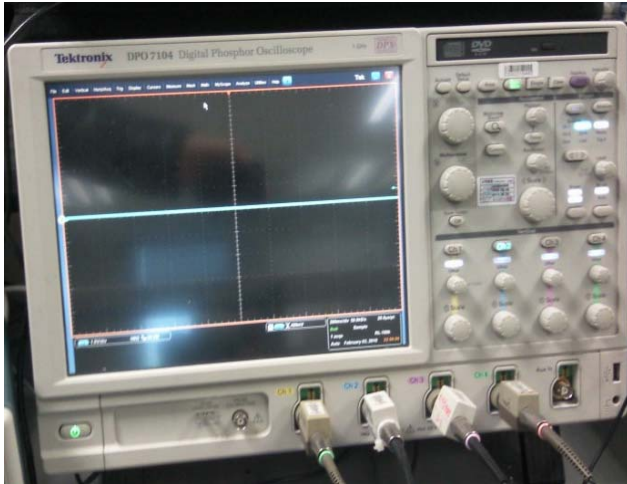


8-3-2. Bottom



8-4. Flow Chart of Troubleshooting

Equipments



↑ Oscilloscope



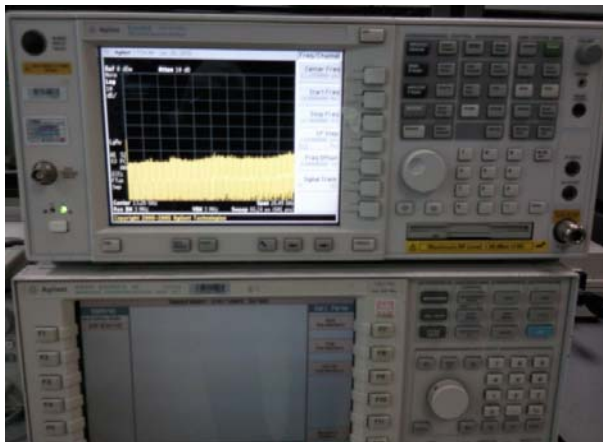
↑ Digital Multimeter



↑ Power Supply



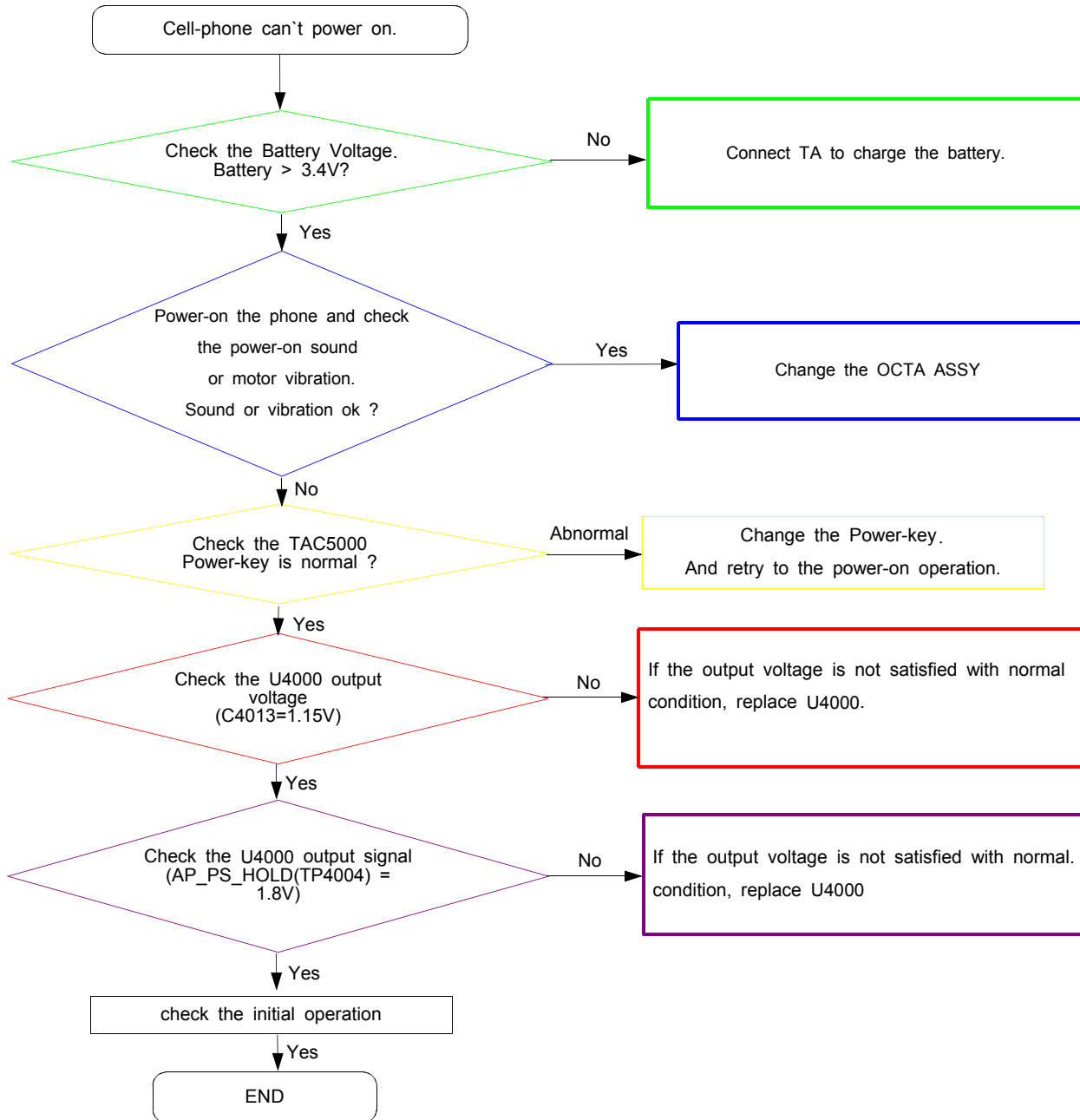
↑ + driver, ESD Safe Tweezer



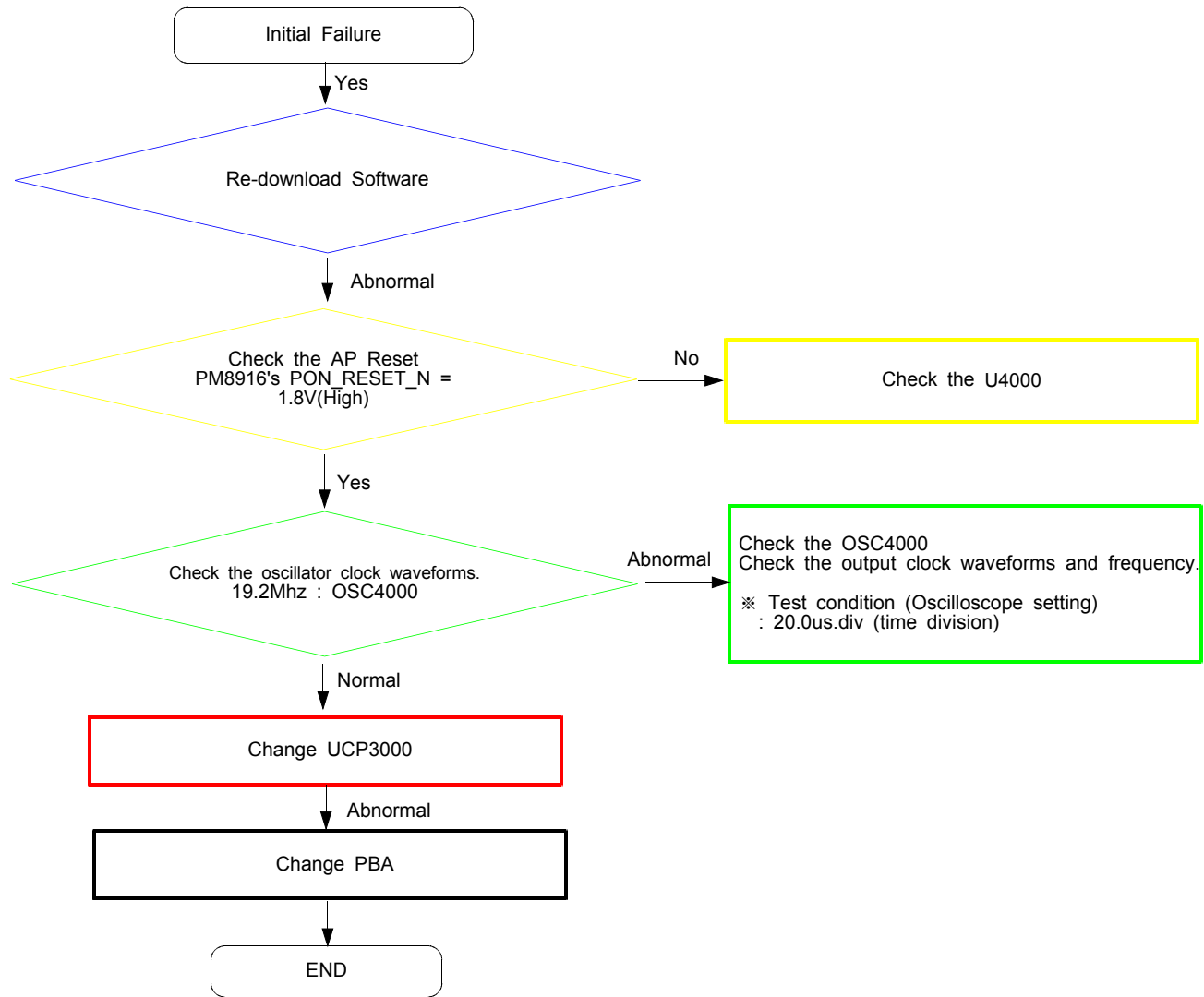
↑ 8960 & Spectrum Analyzer

↑ Soldering iron

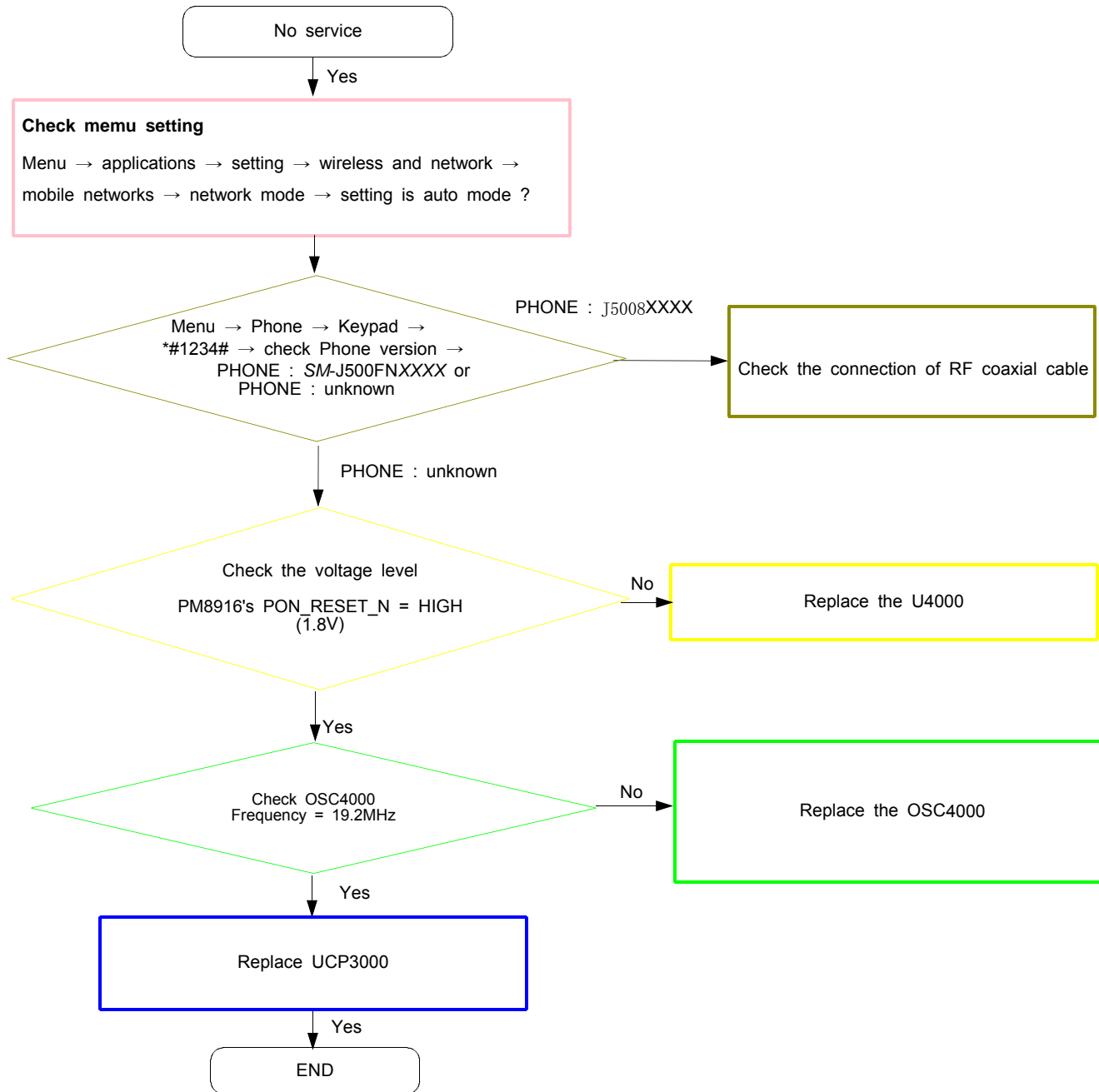
8-4-1. Power On



8-4-2. Initial

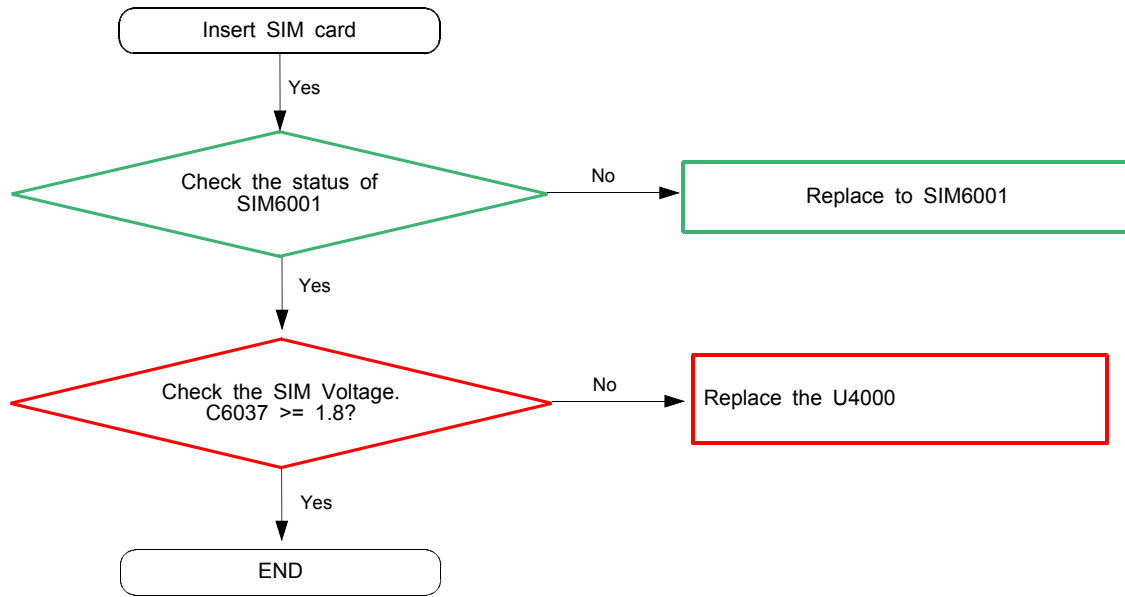


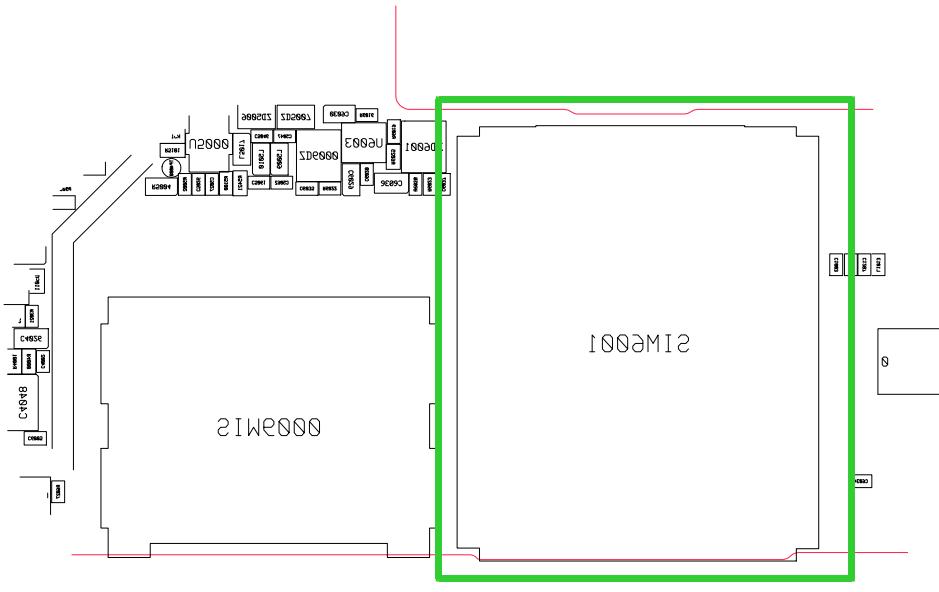
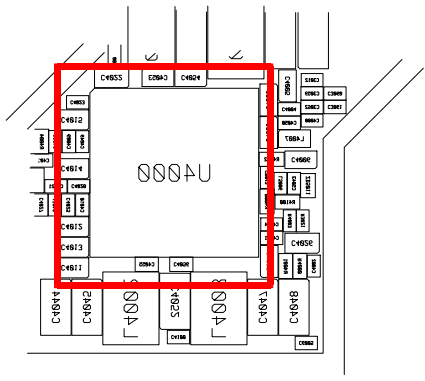
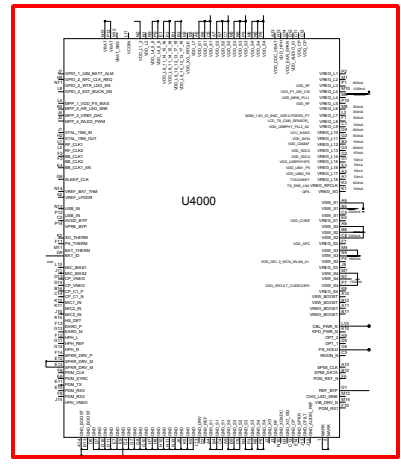
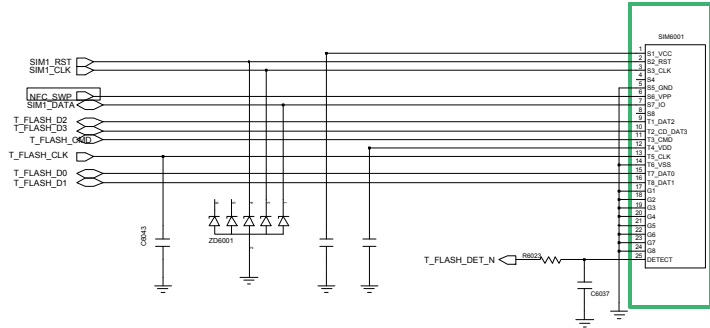
8-4-3. No Service



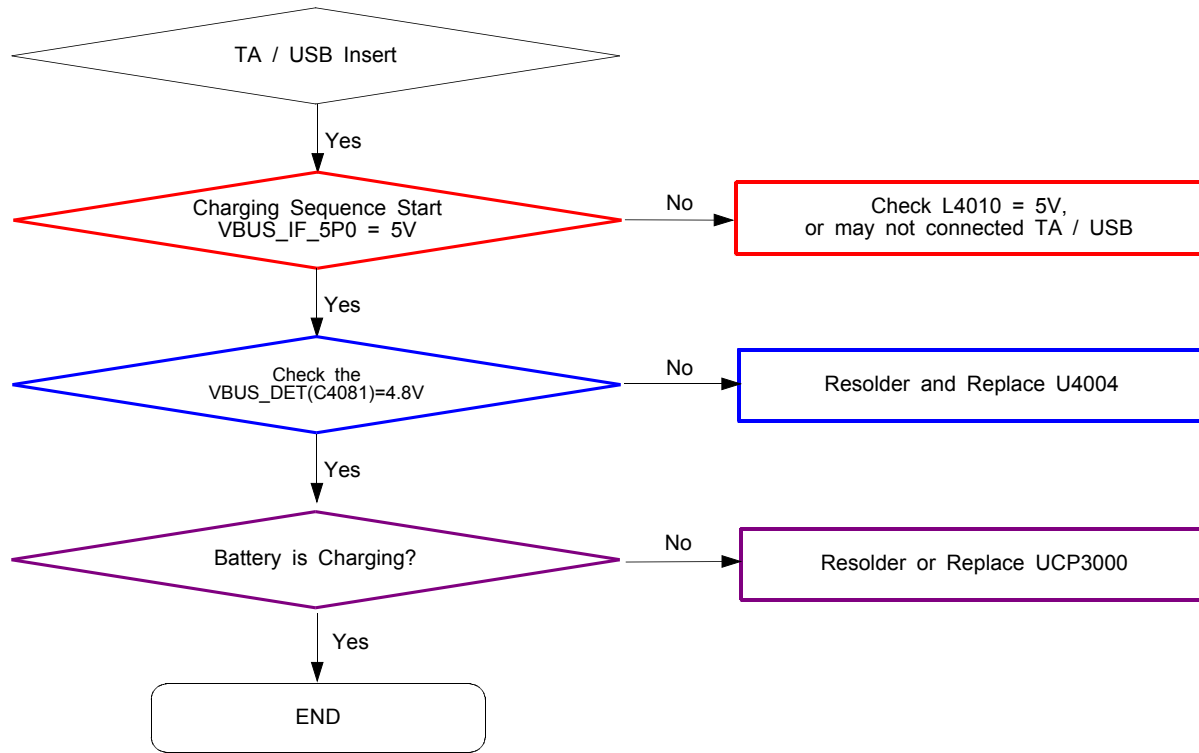


8-4-4. Sim Part - Sim Card

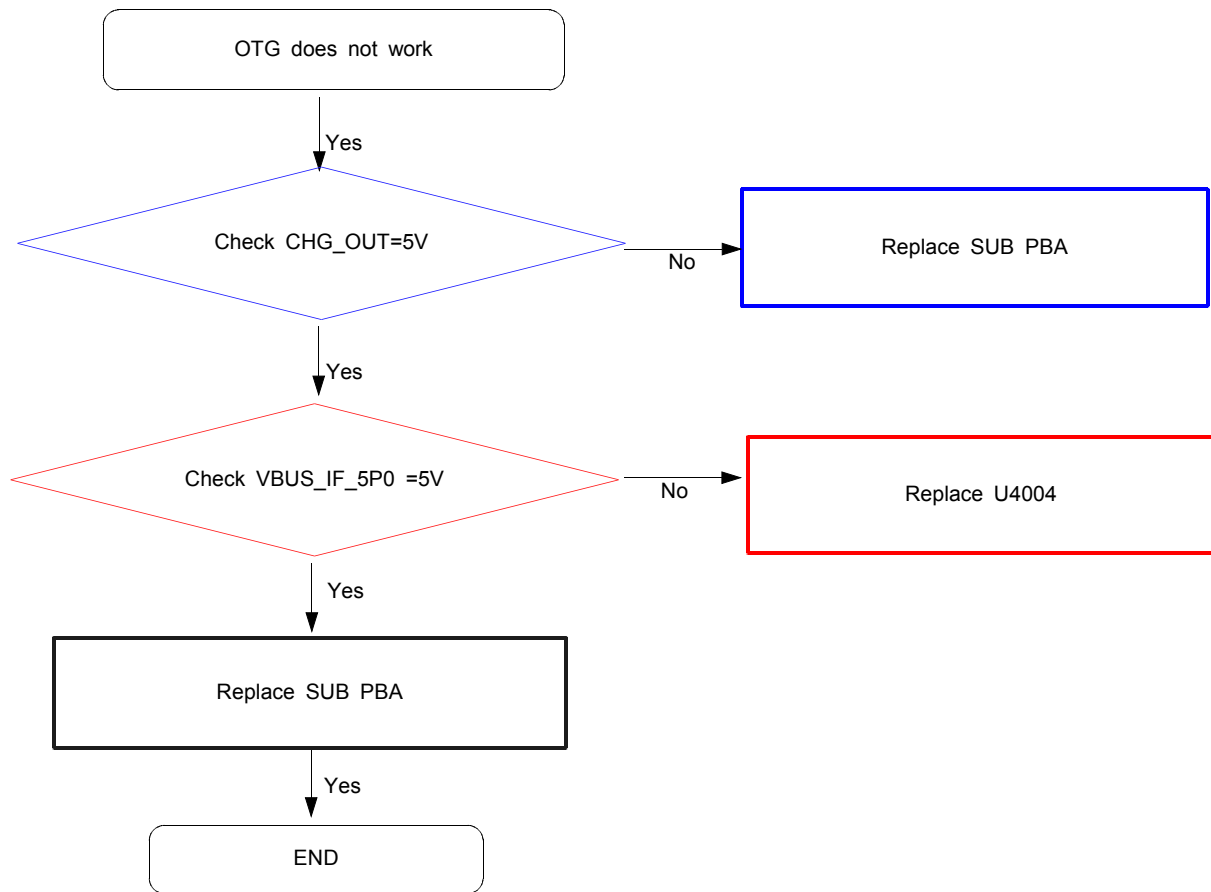




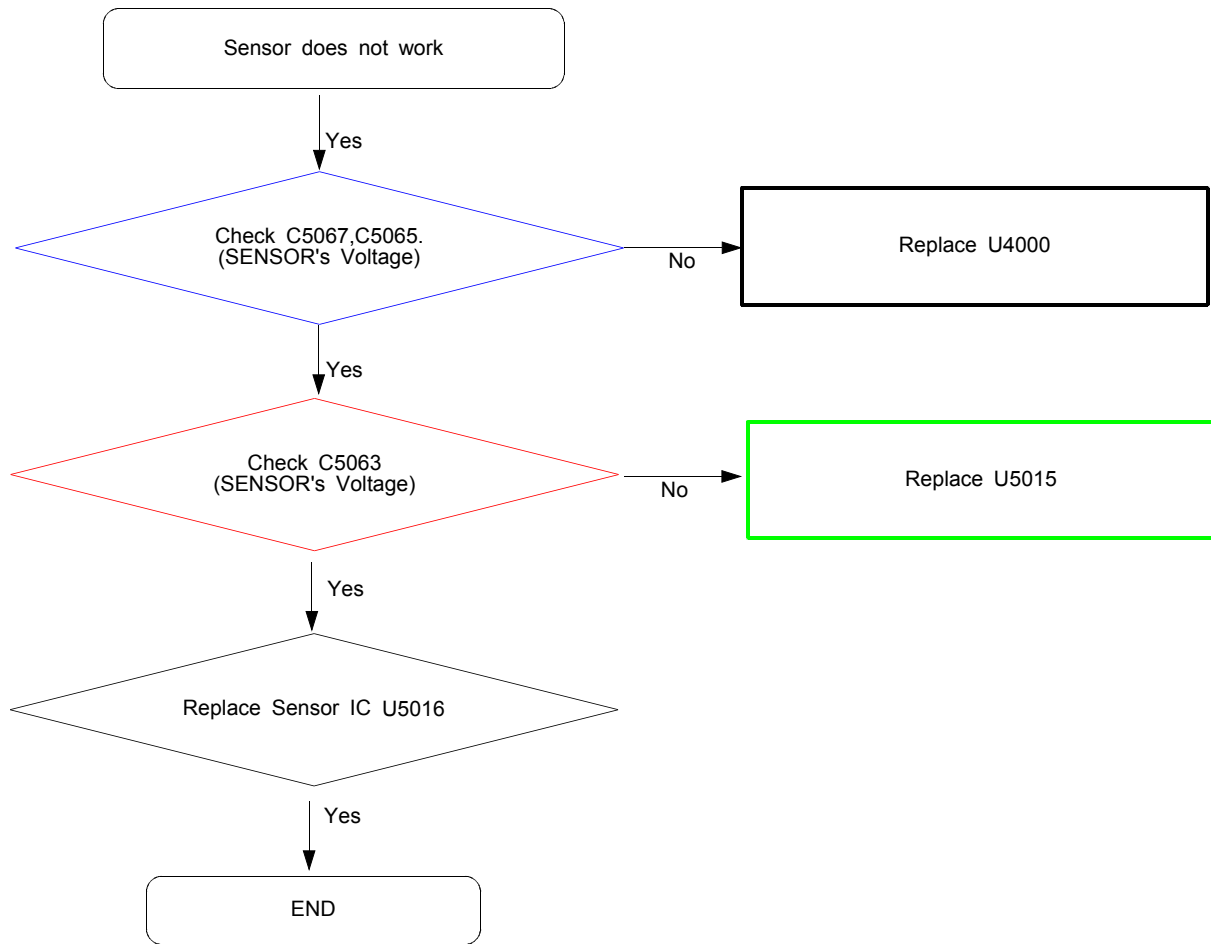
8-4-5. Charging Part



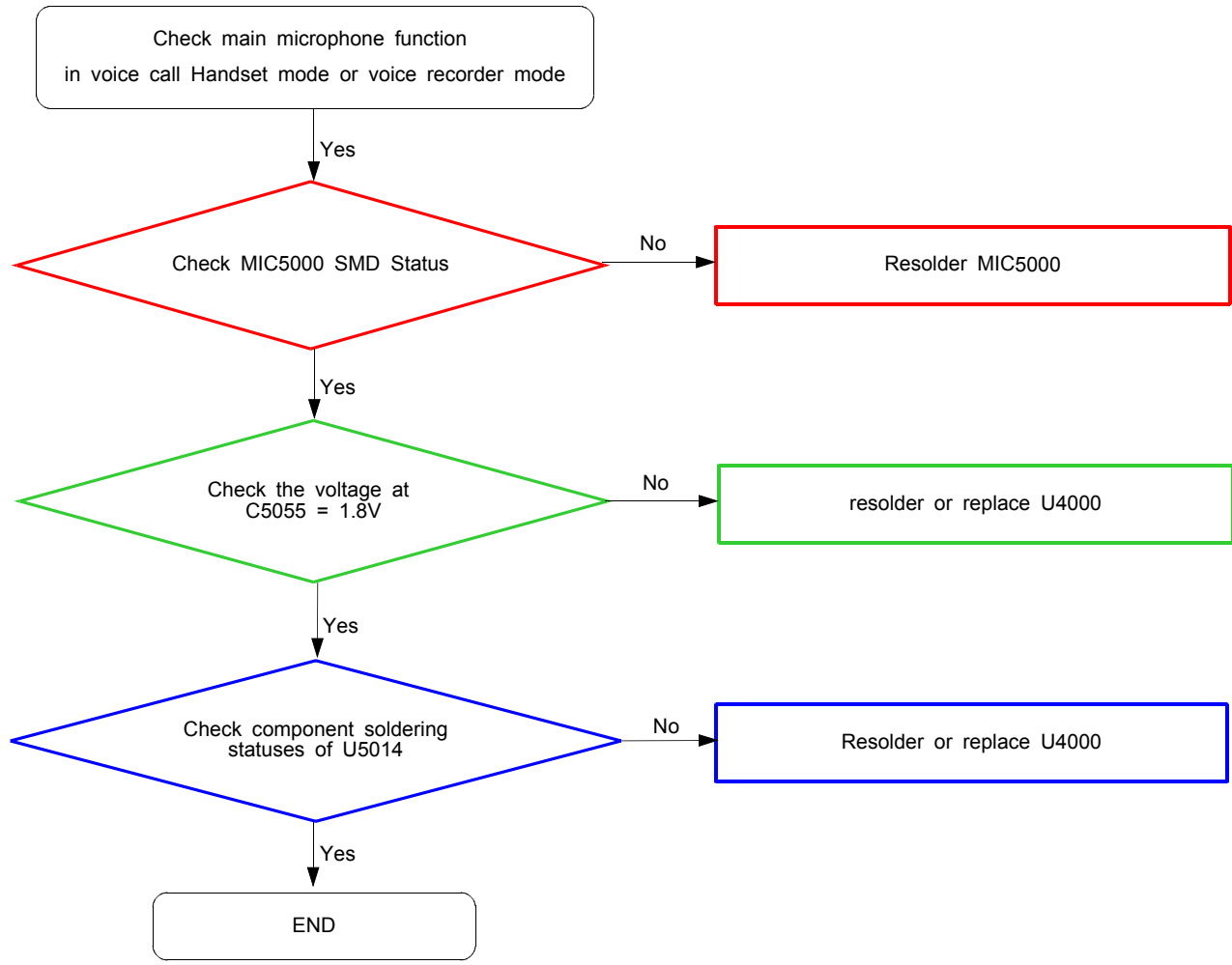
8-4-6. OTG

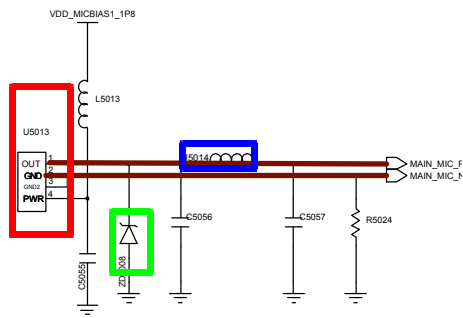


8-4-7. Proxy Sensor

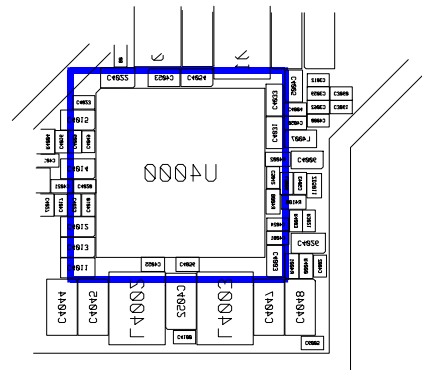
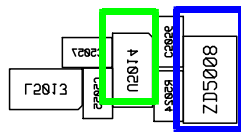
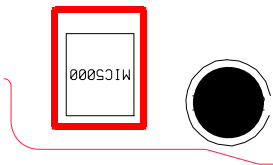
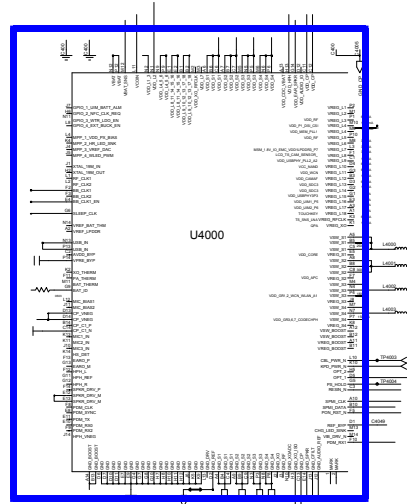


8-4-8 Microphone Part - Main MIC

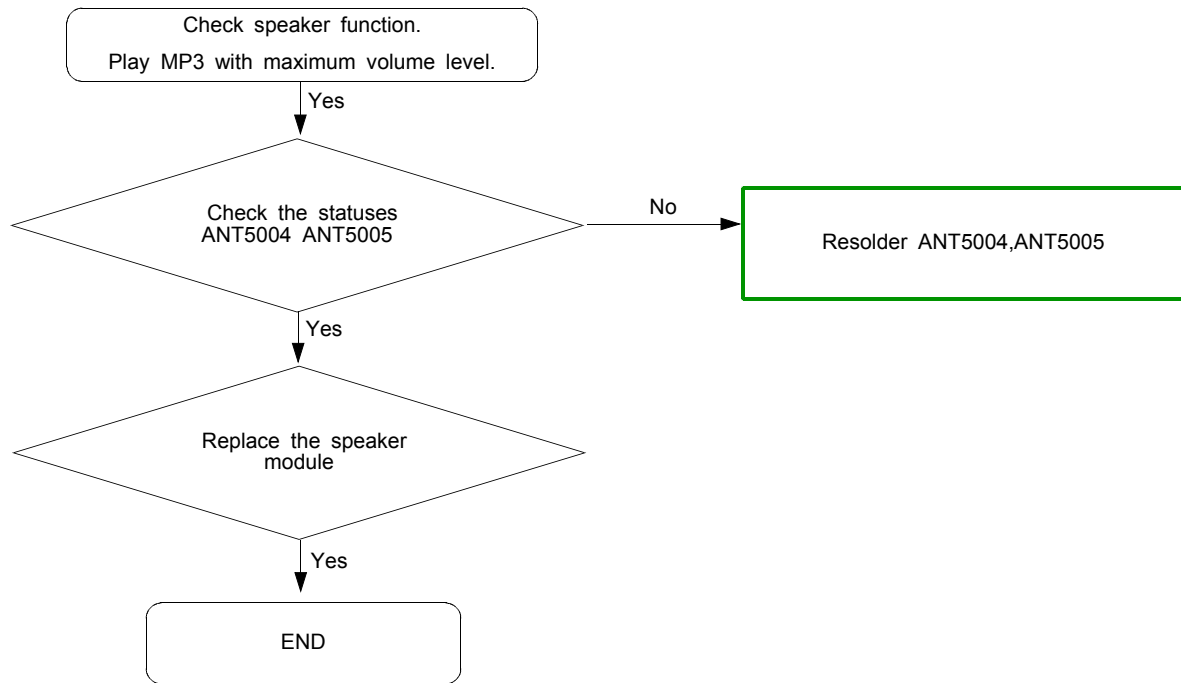


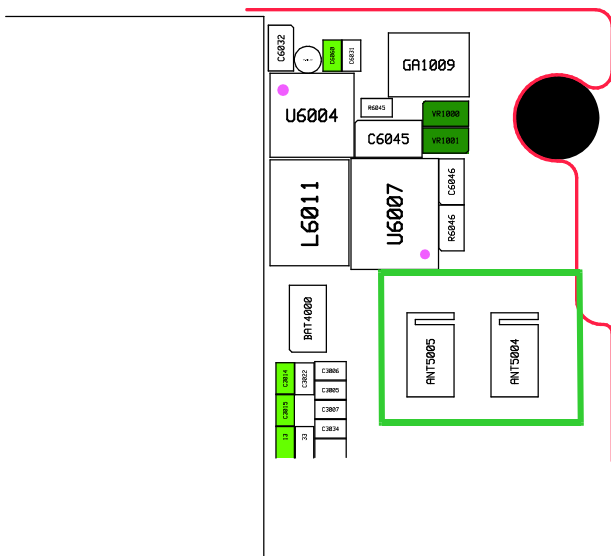
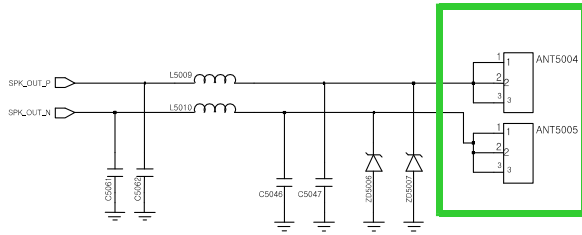


Main MIC

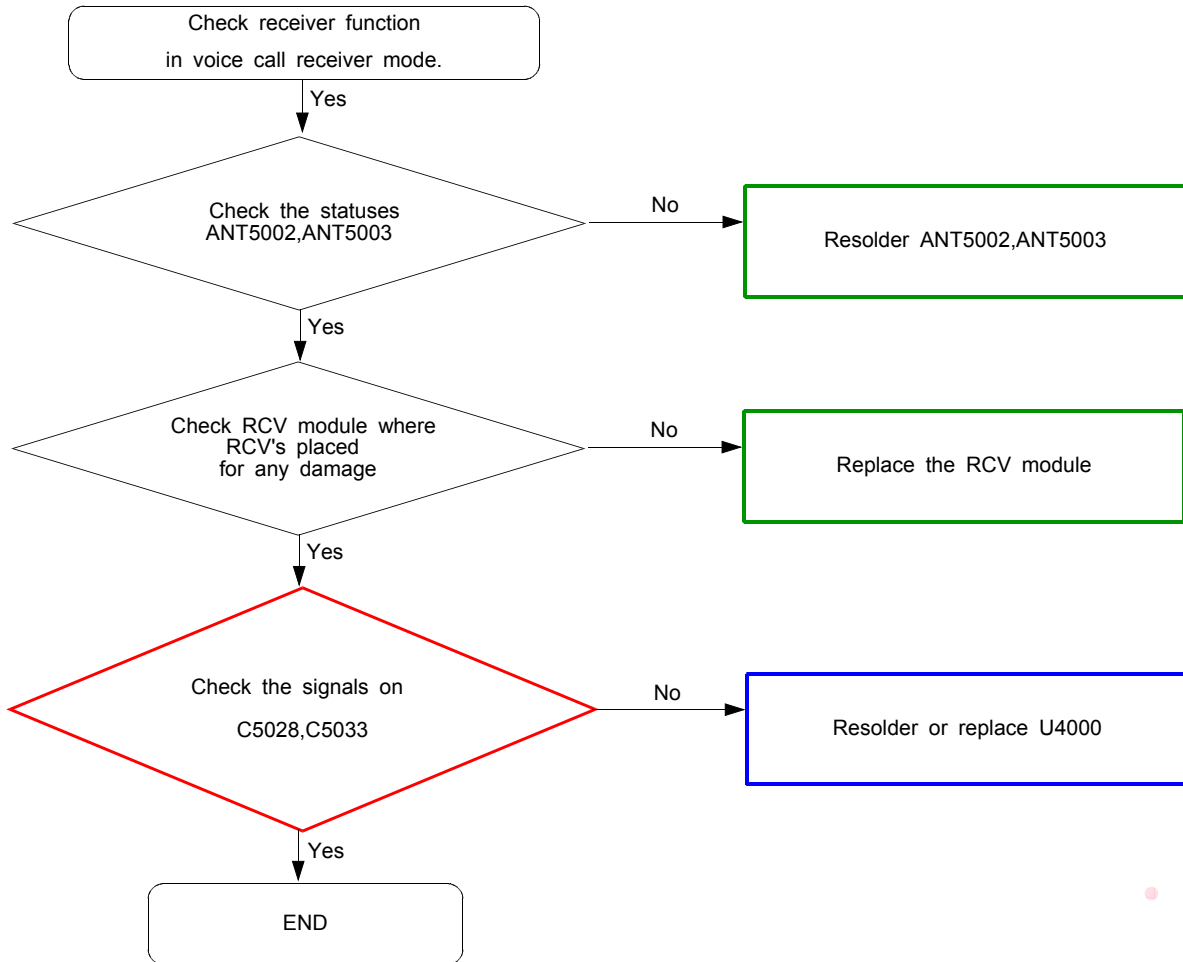


8-4-9. Speaker Part

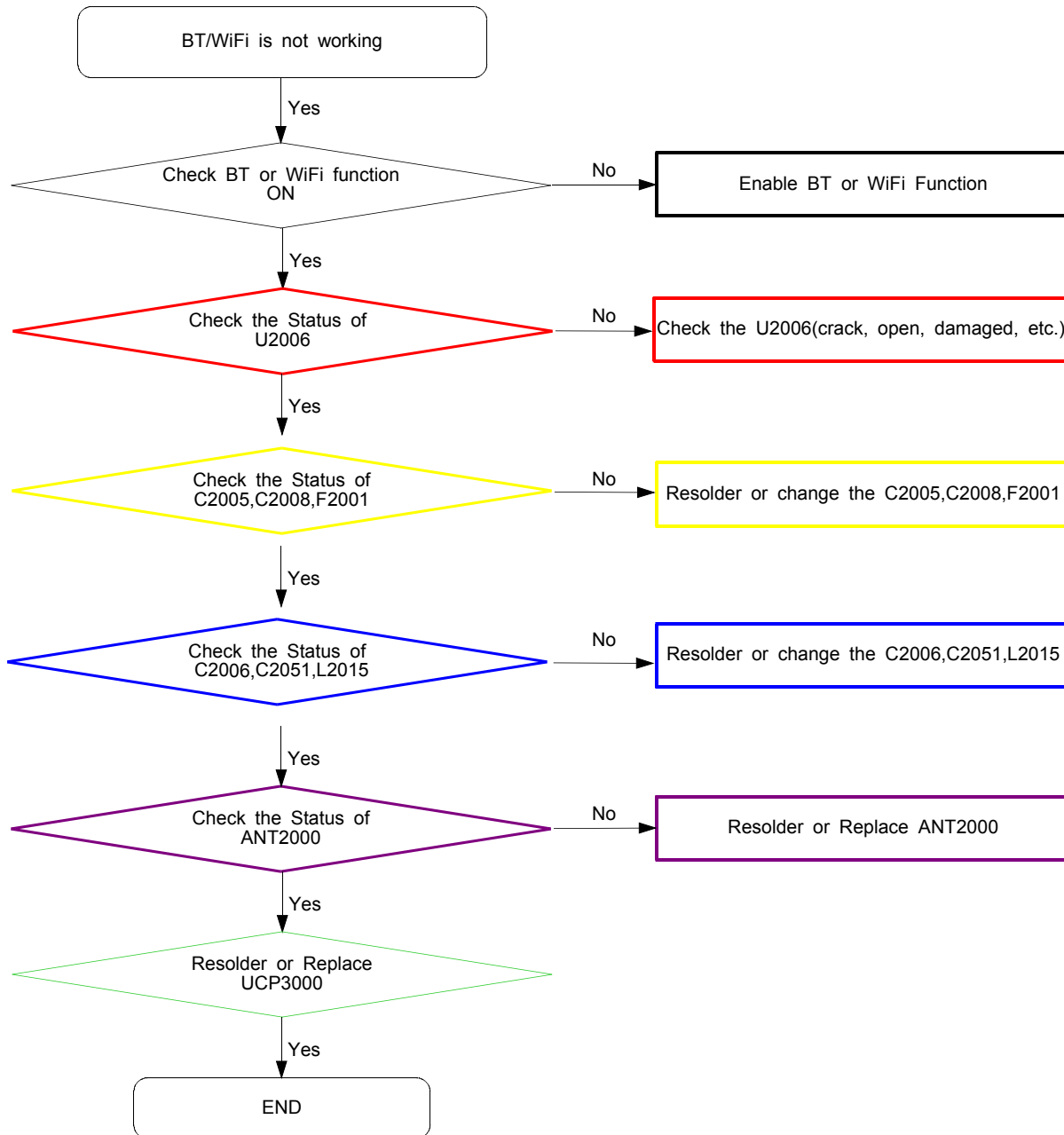




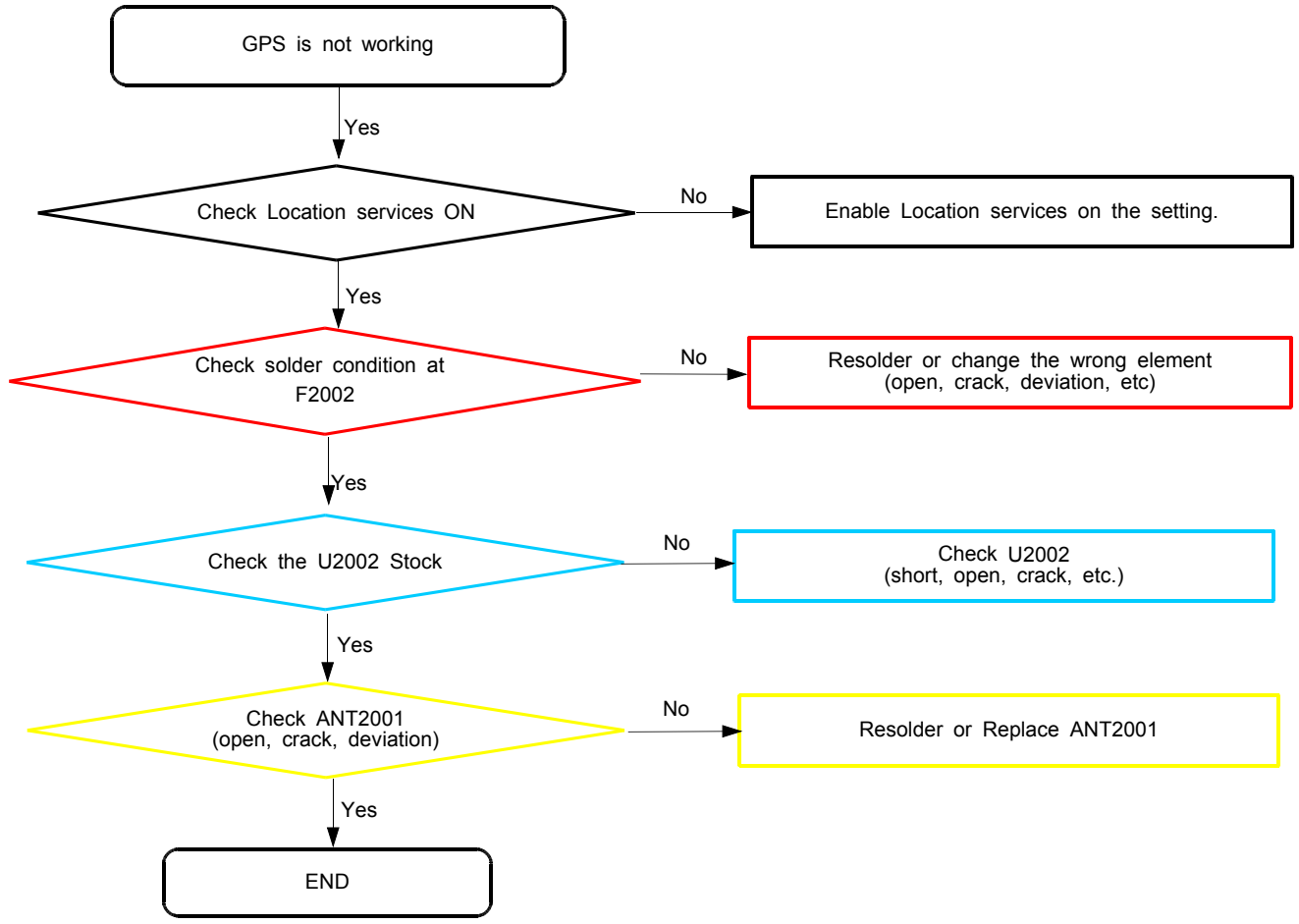
8-4-10. Receiver Part



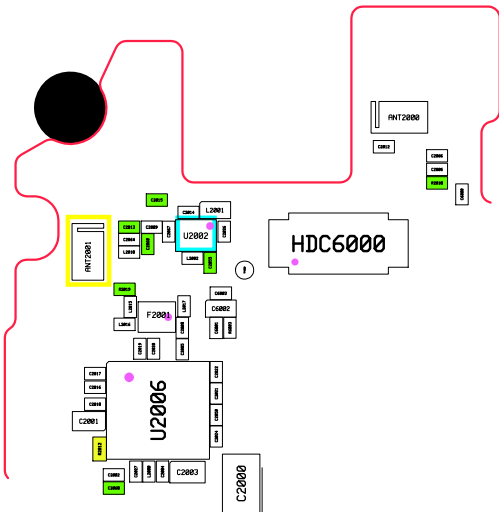
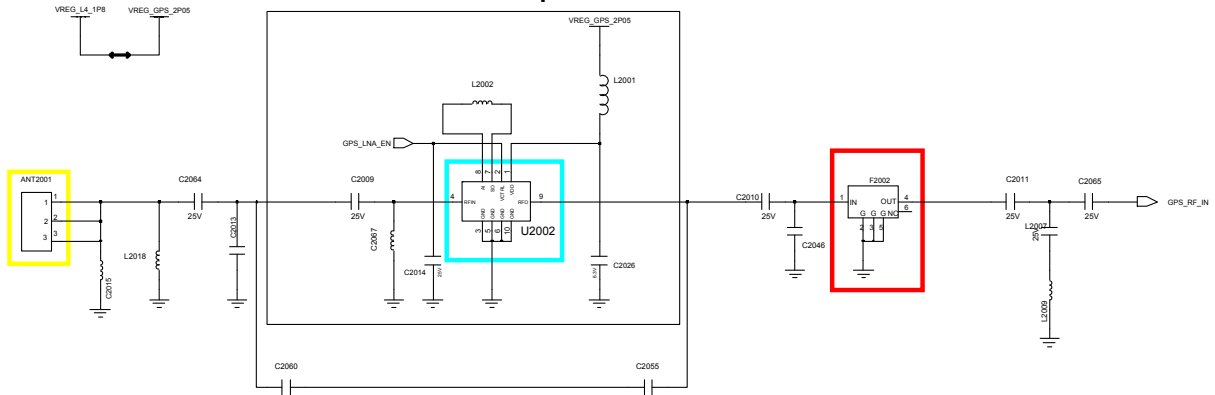
8-4-11. BT/WIFI



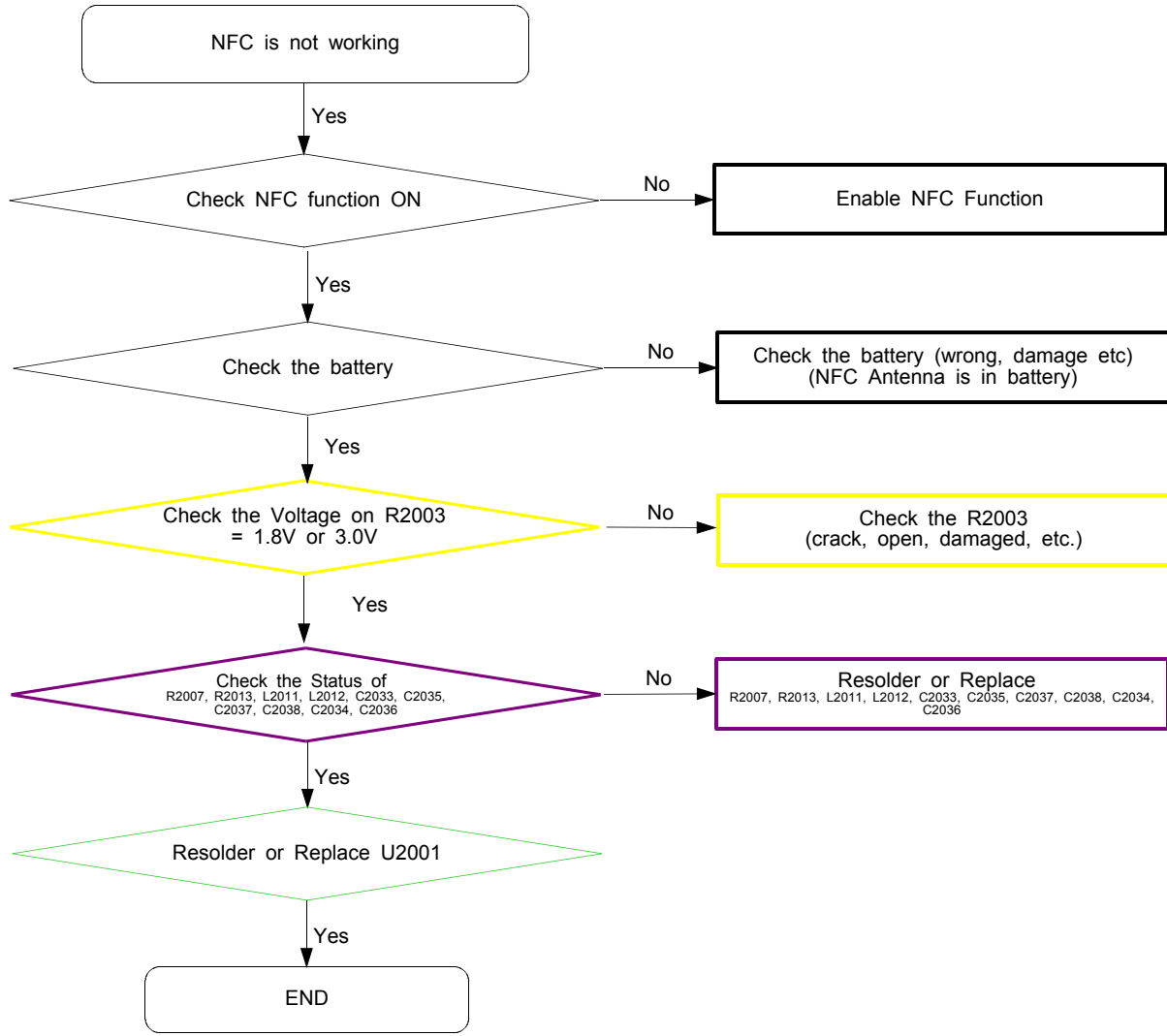
8-4-12. GPS

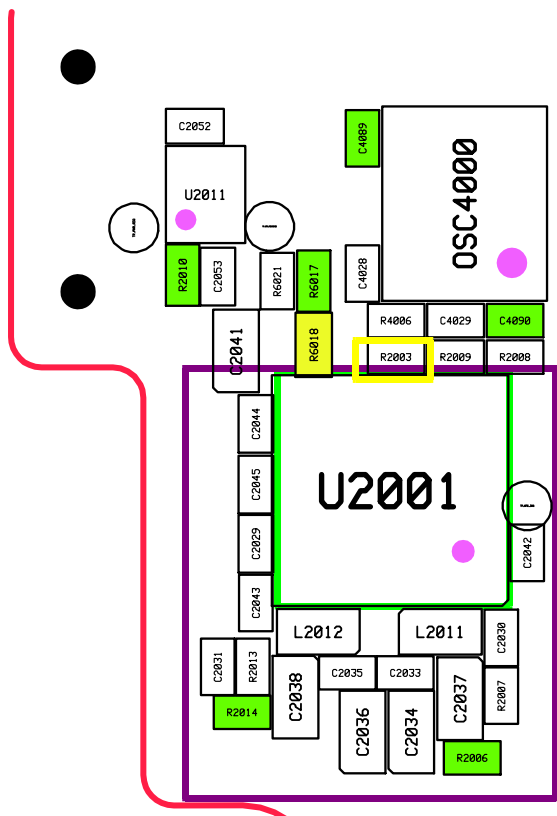
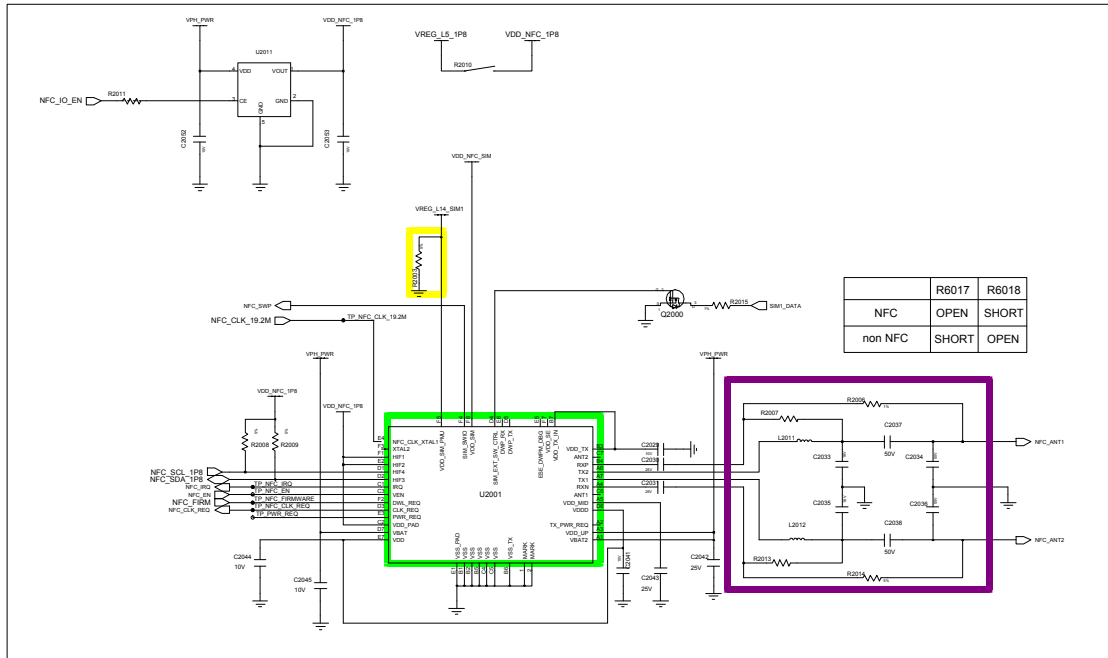


GPS LNA Option

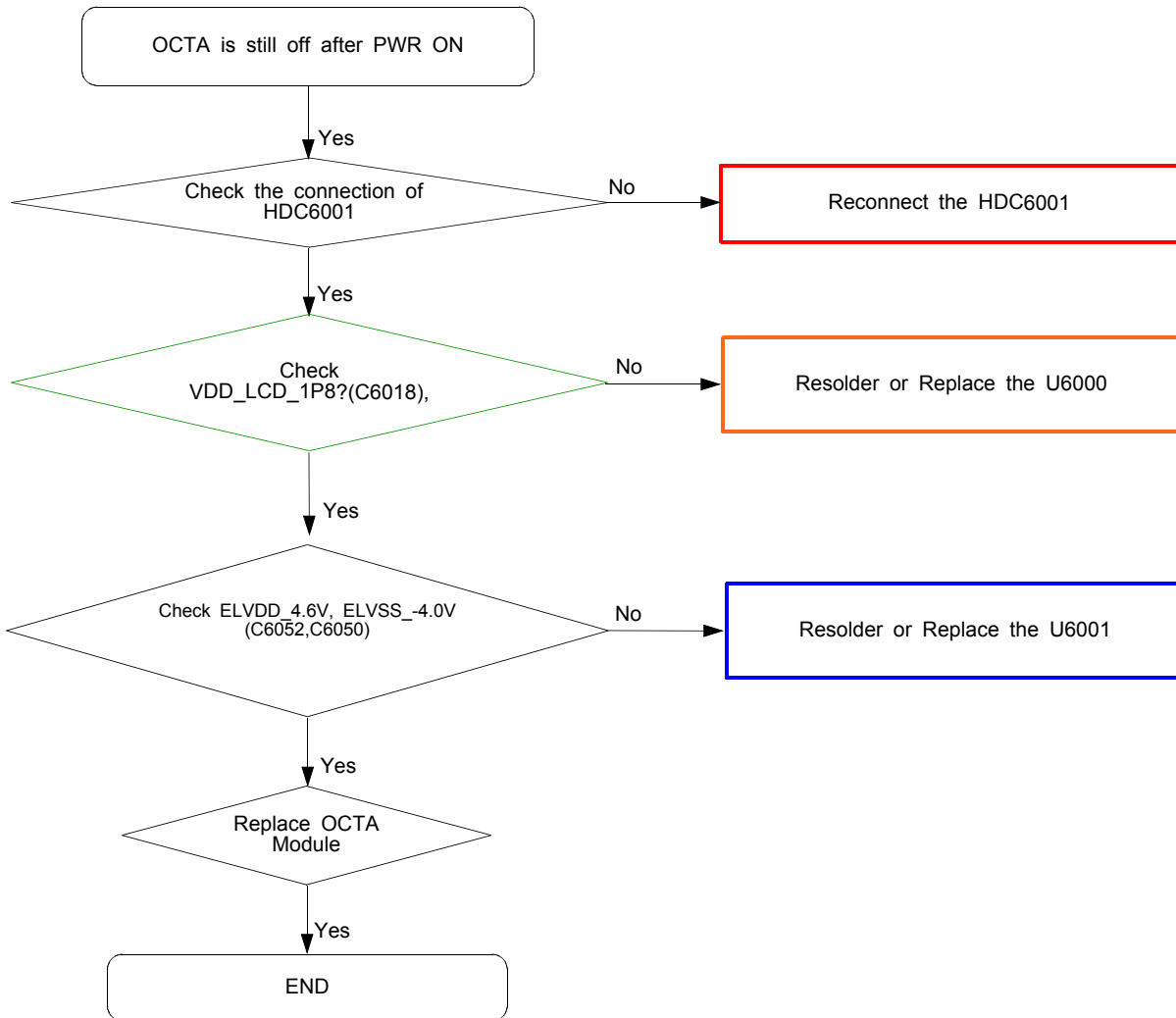


8-4-13. NFC

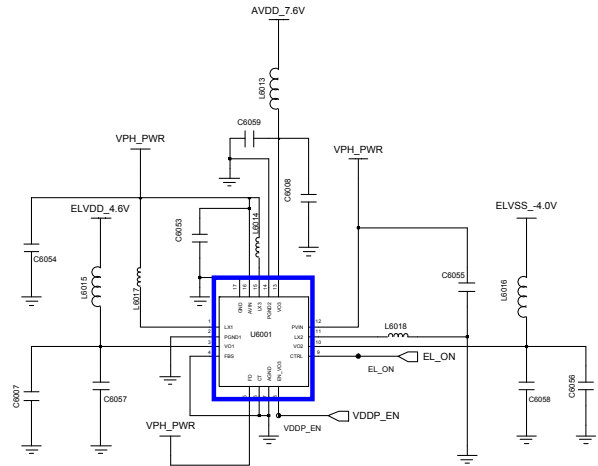
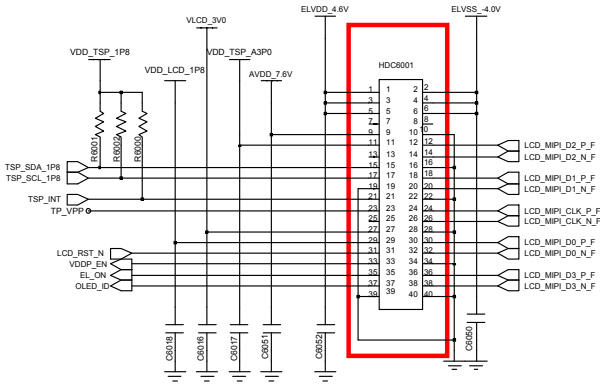




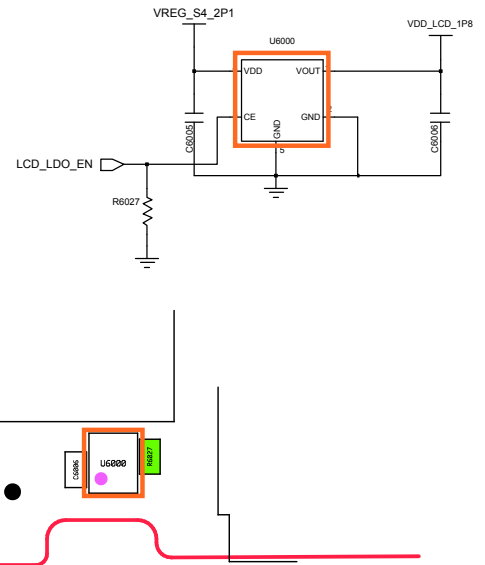
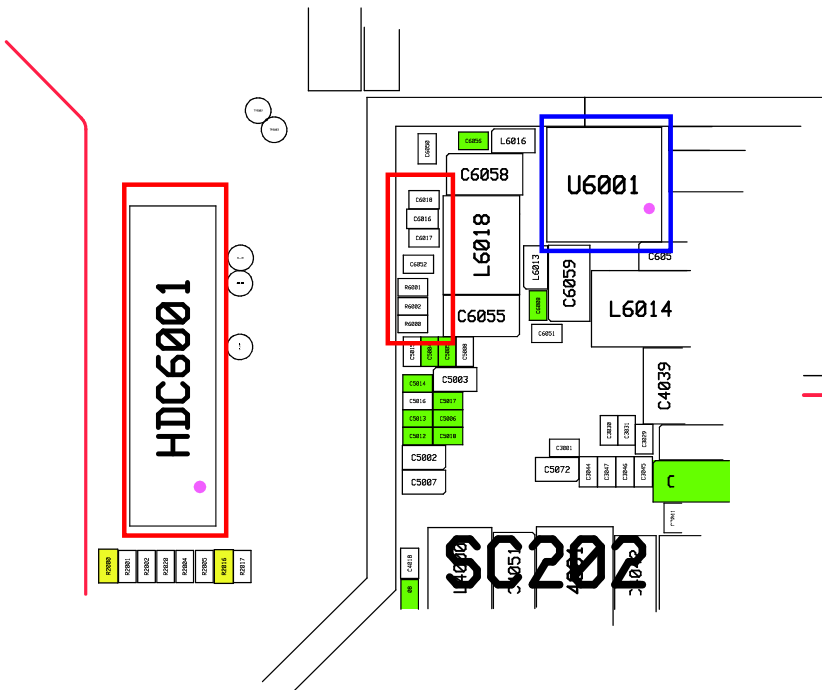
8-4-14. OCTA



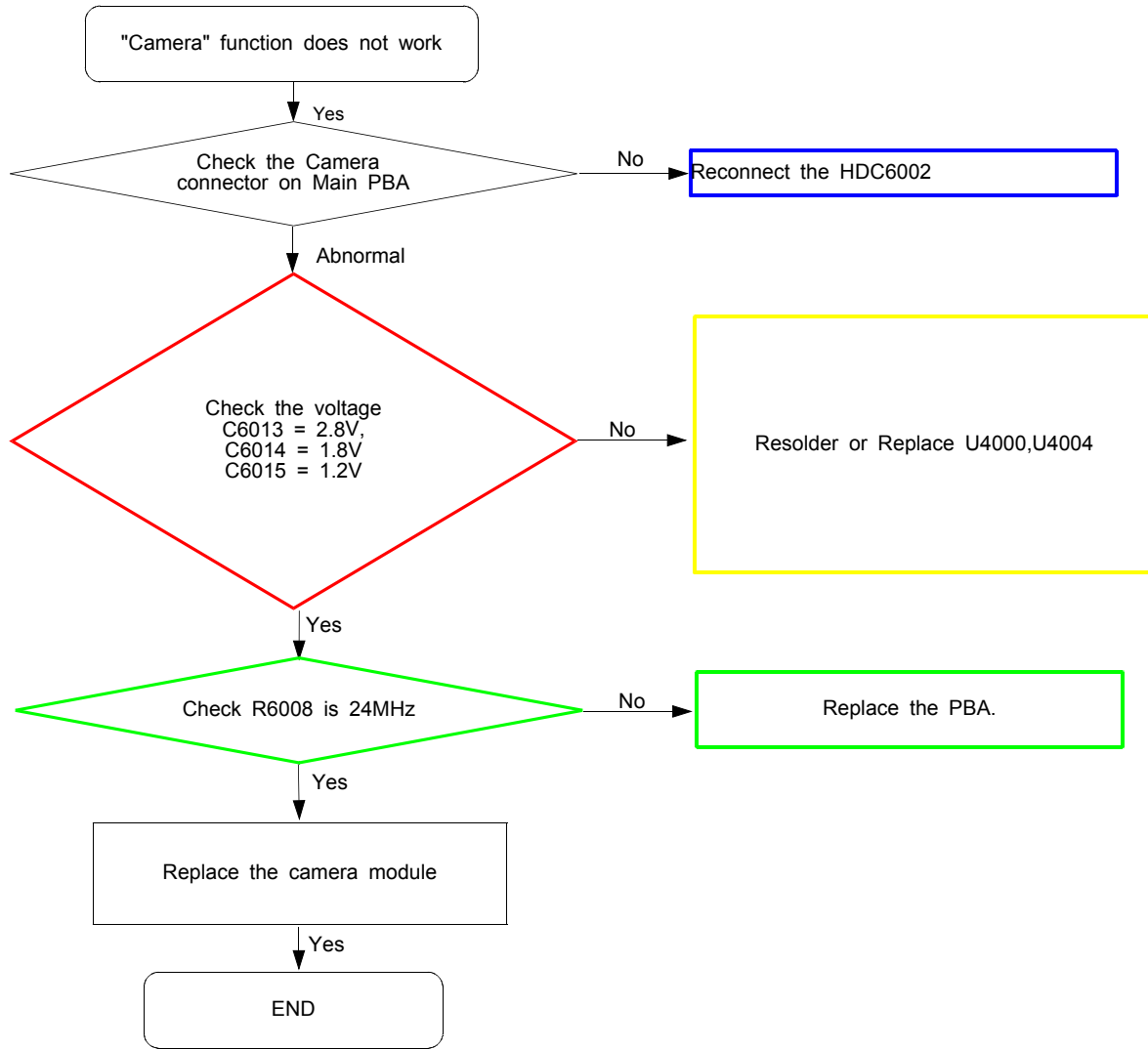
DISPLAY PART

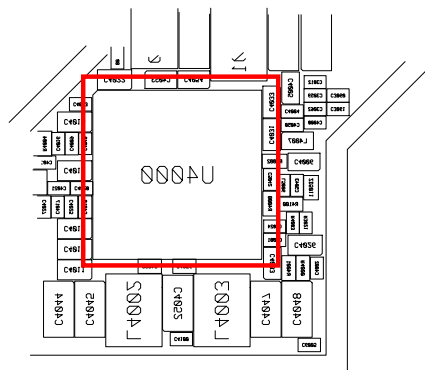
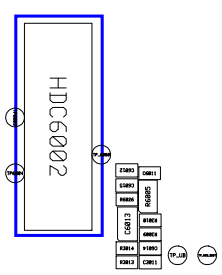
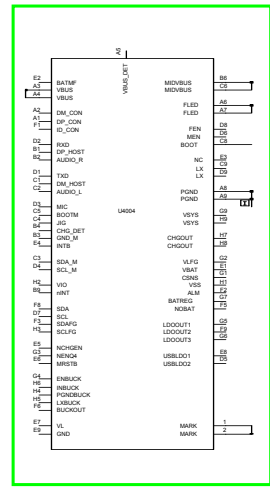
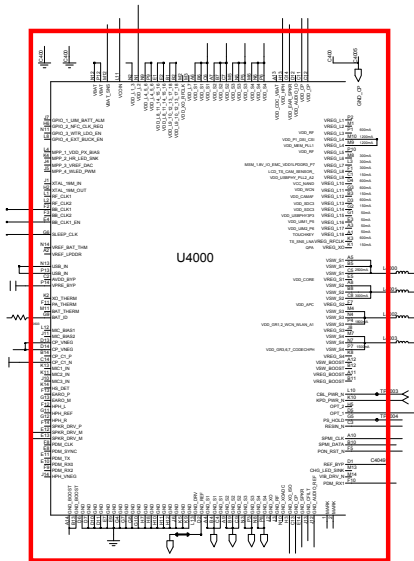
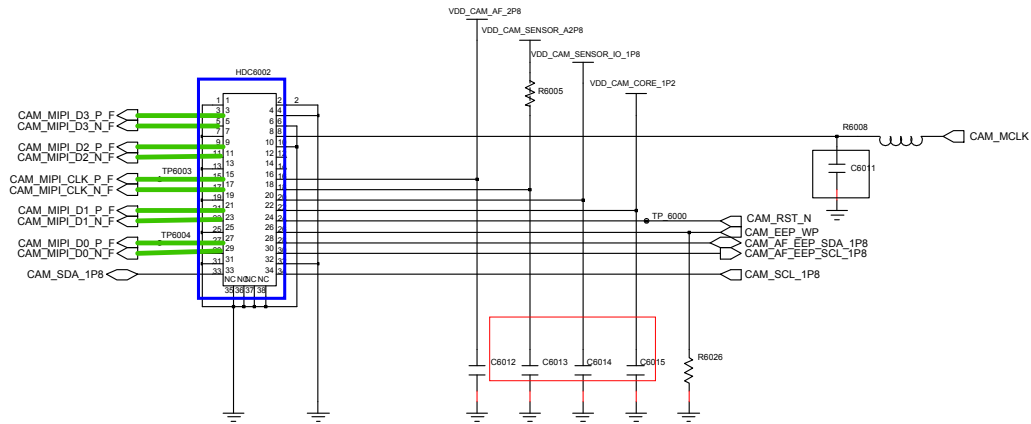


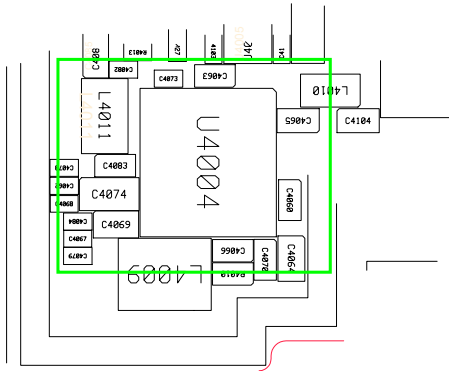
OCTA DCDC



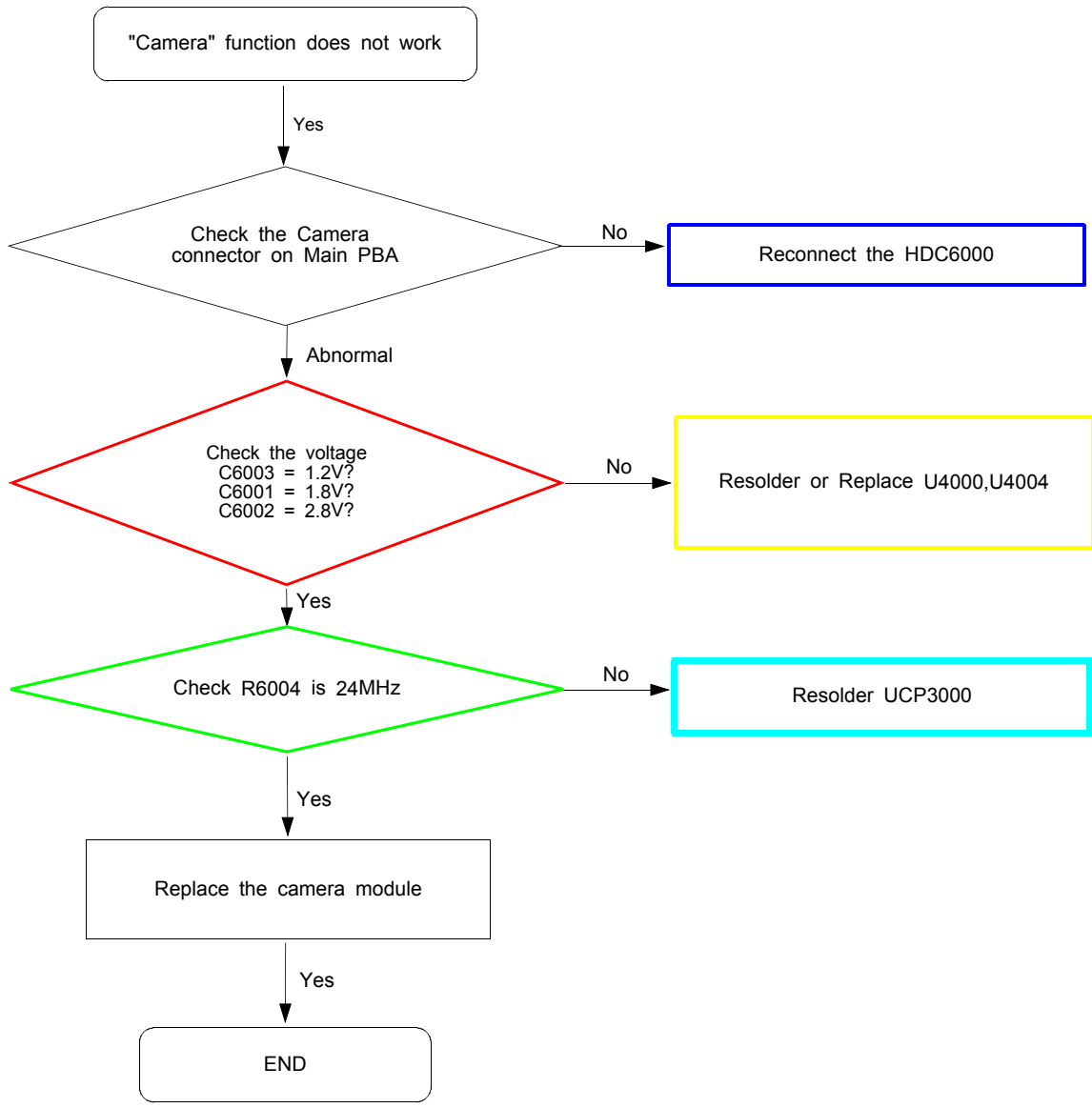
8-4-15. 13M CAM

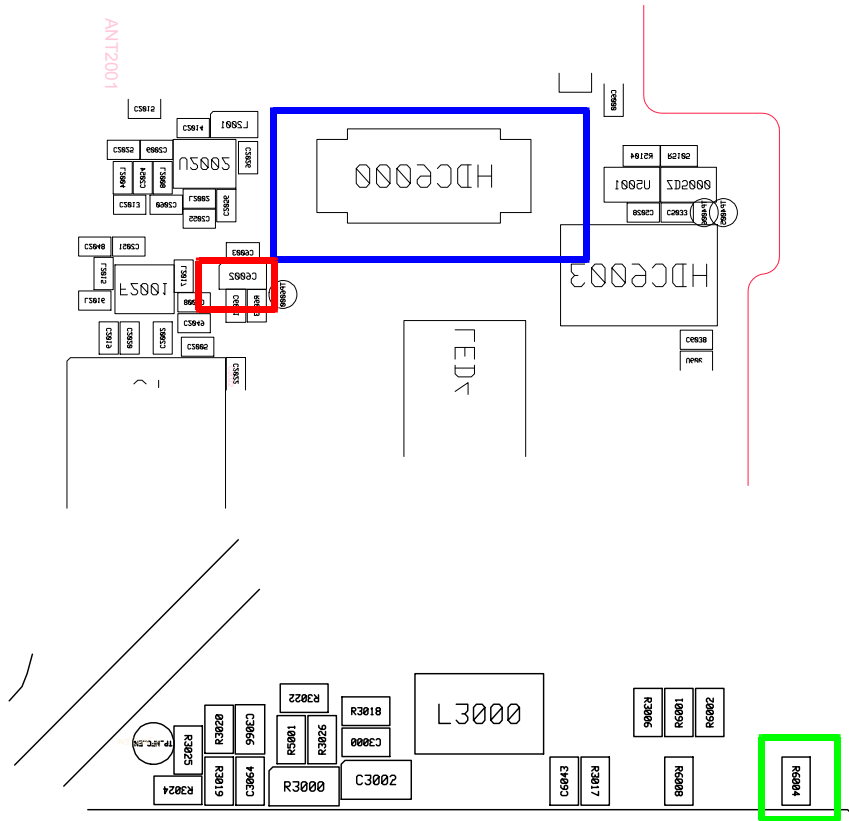
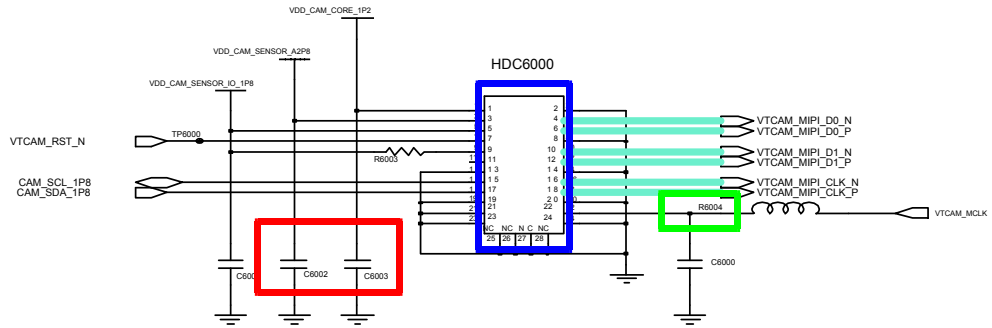


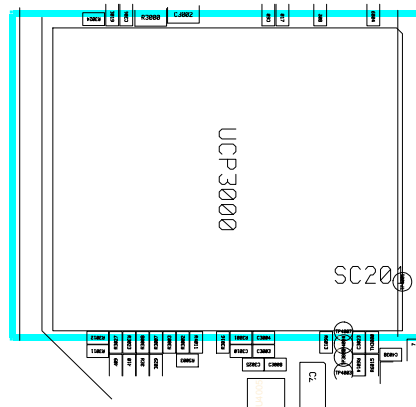
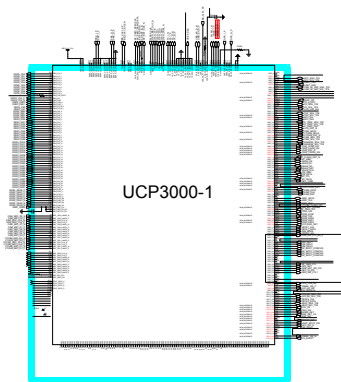
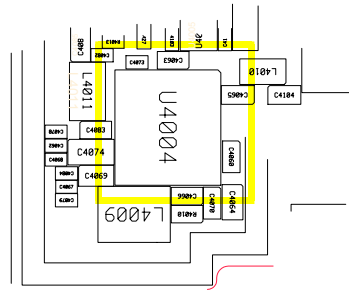
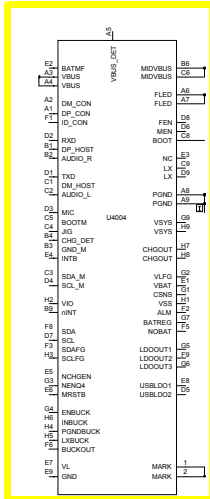
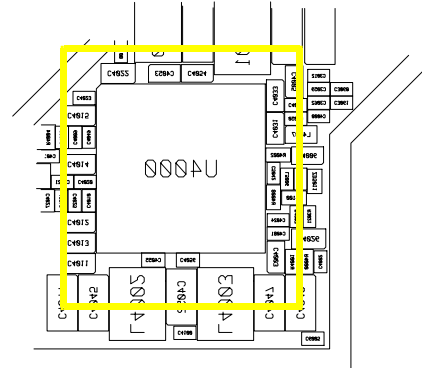
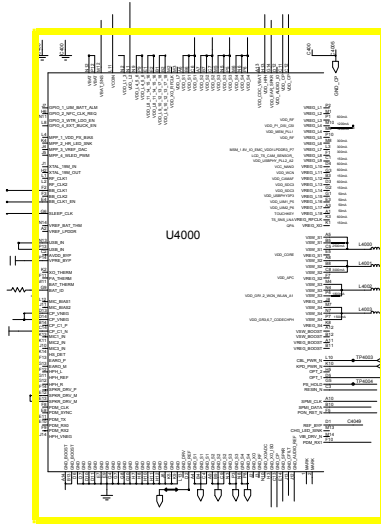




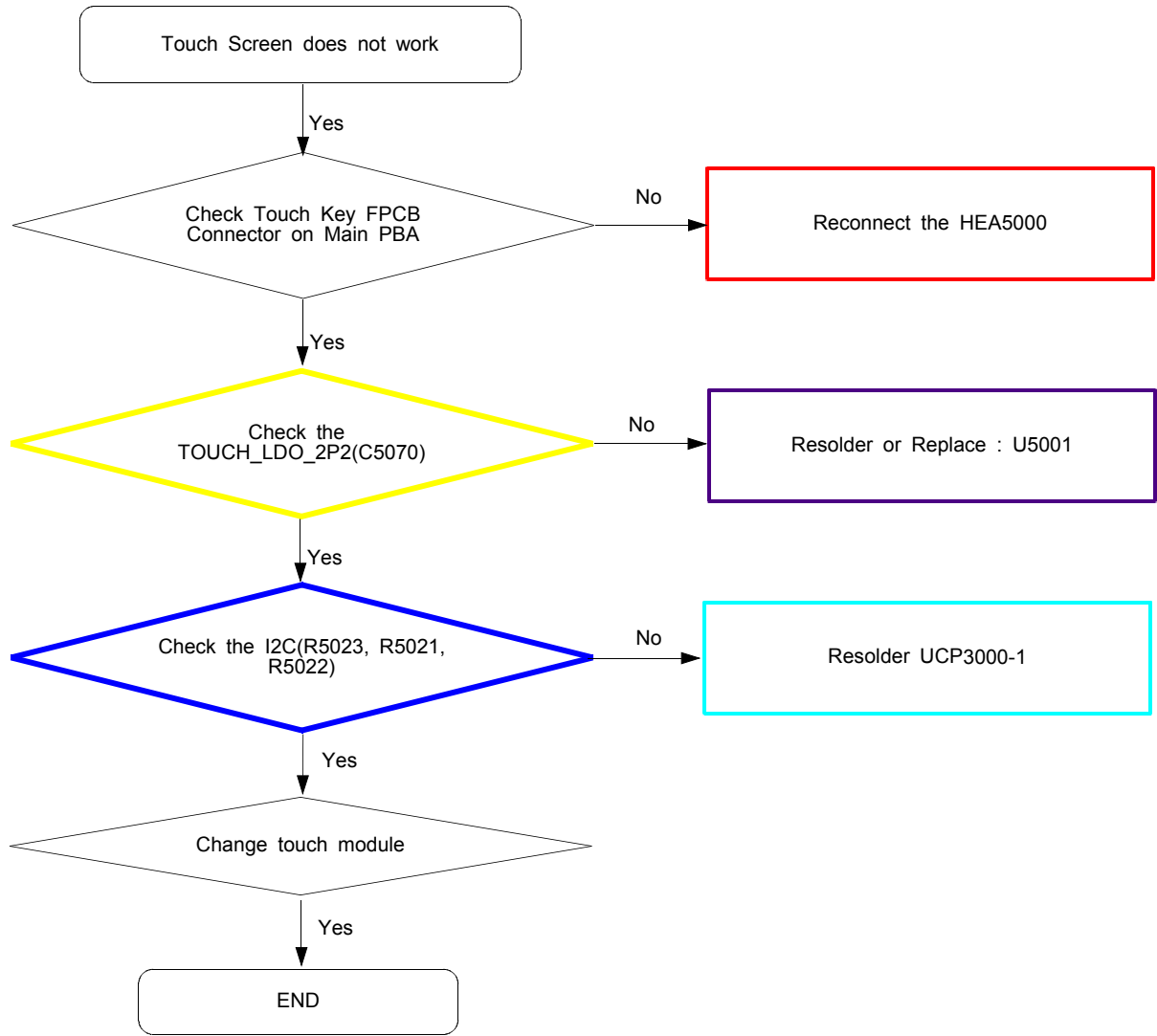
8-4-16. VT CAM



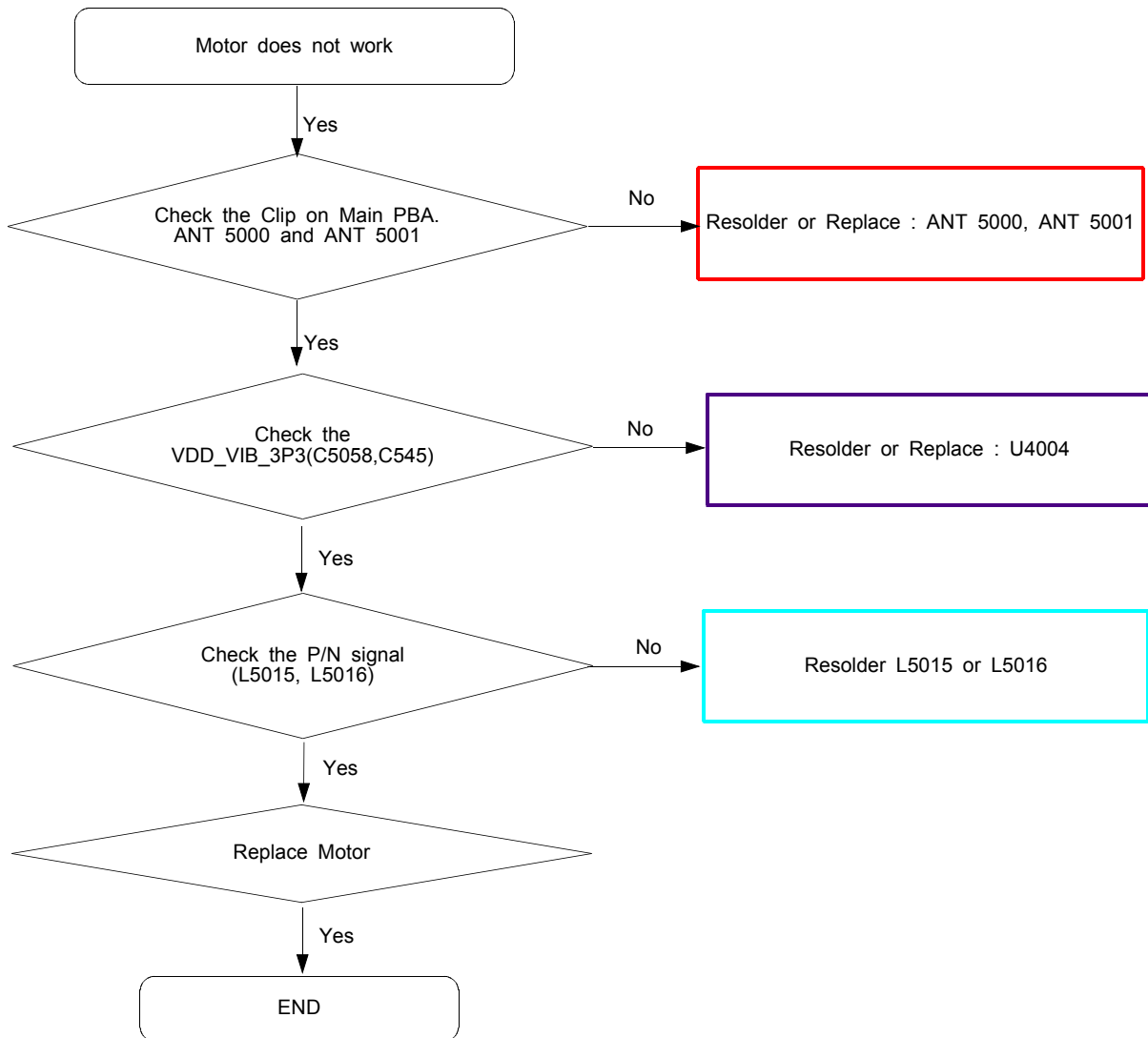




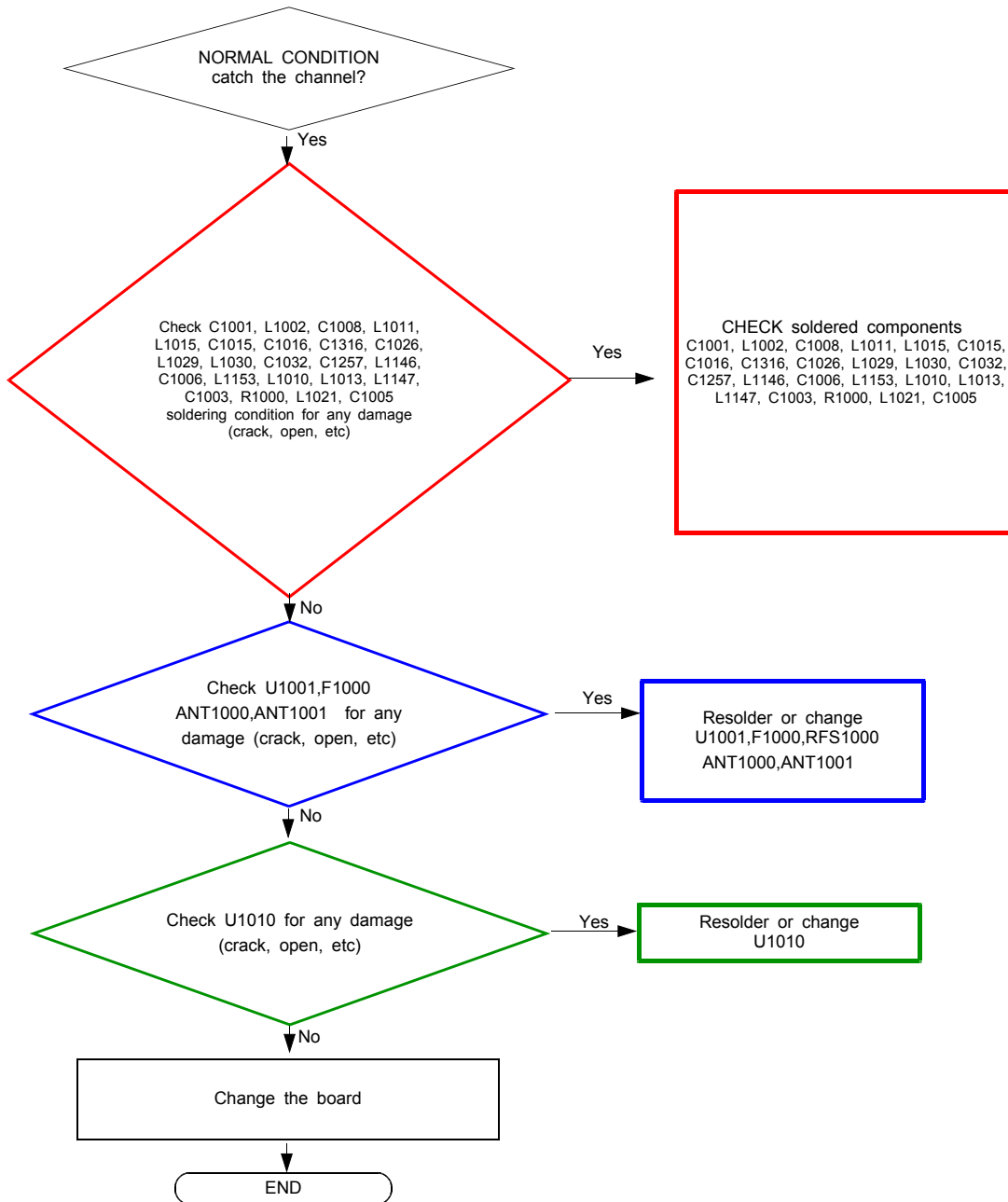
8-4-17. Touch Key FPCB

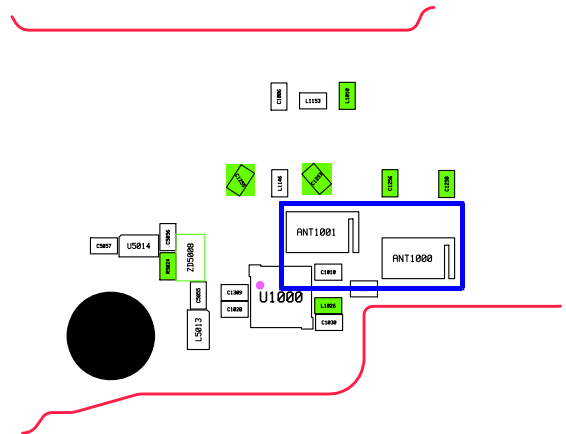
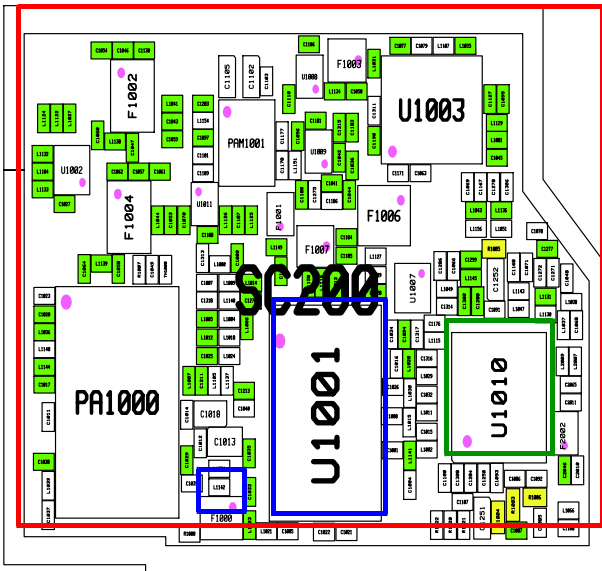
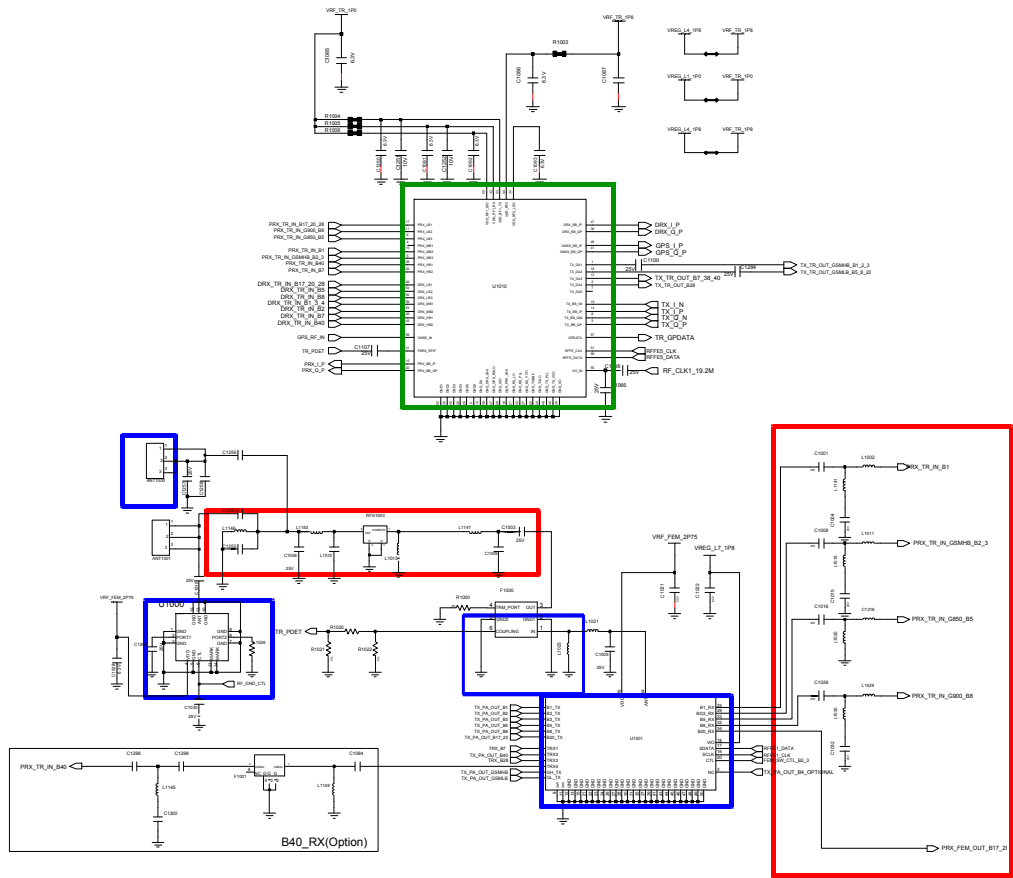


8-4-18. Motor

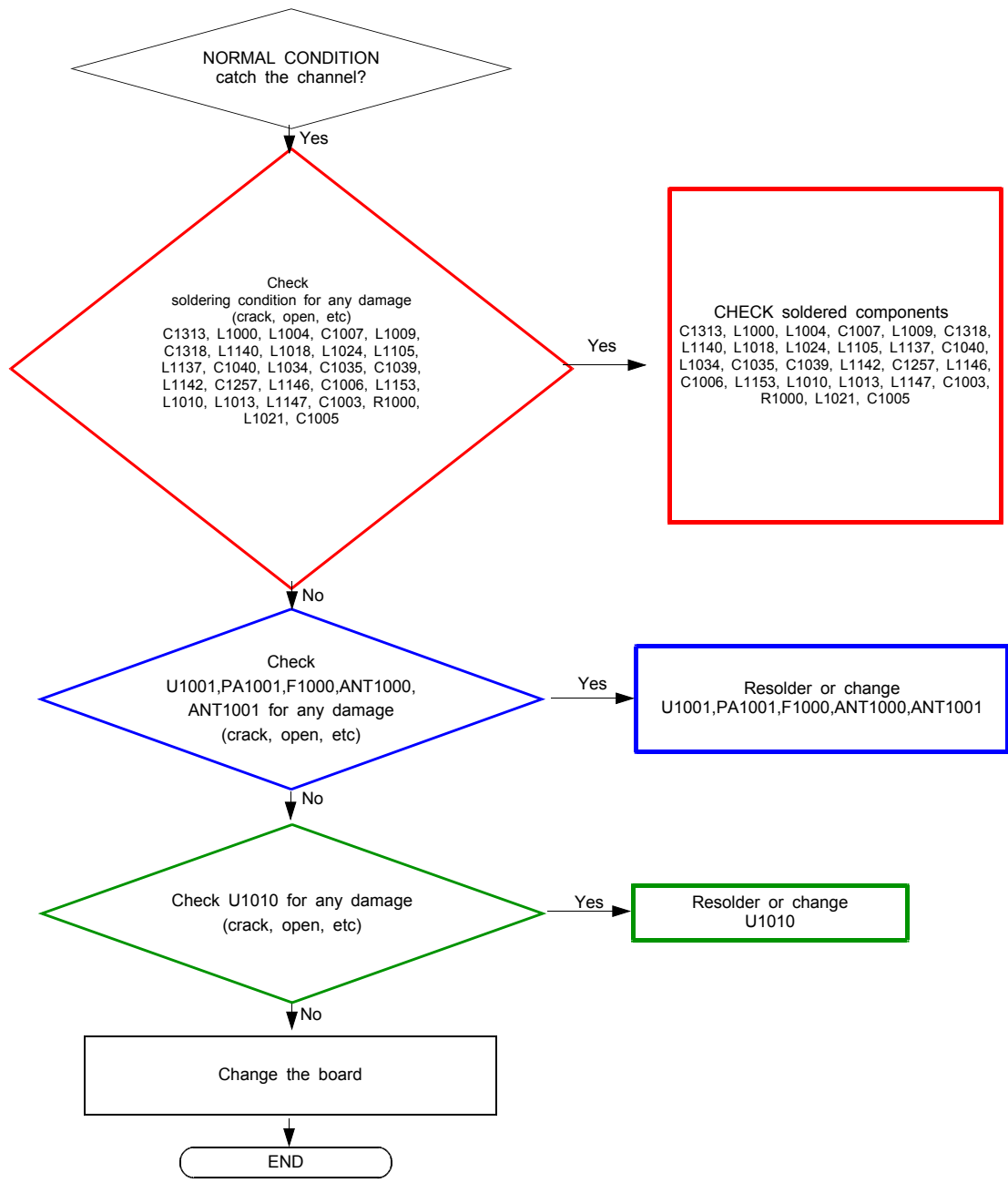


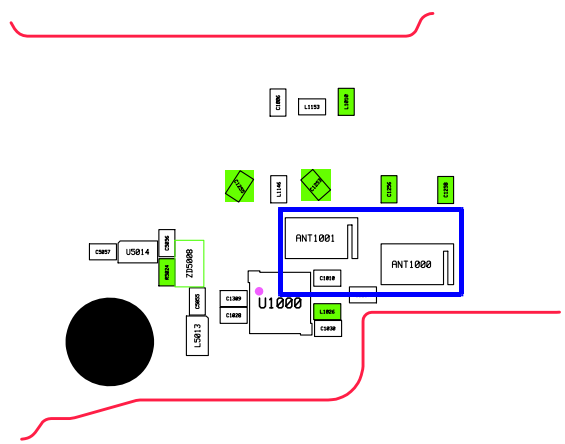
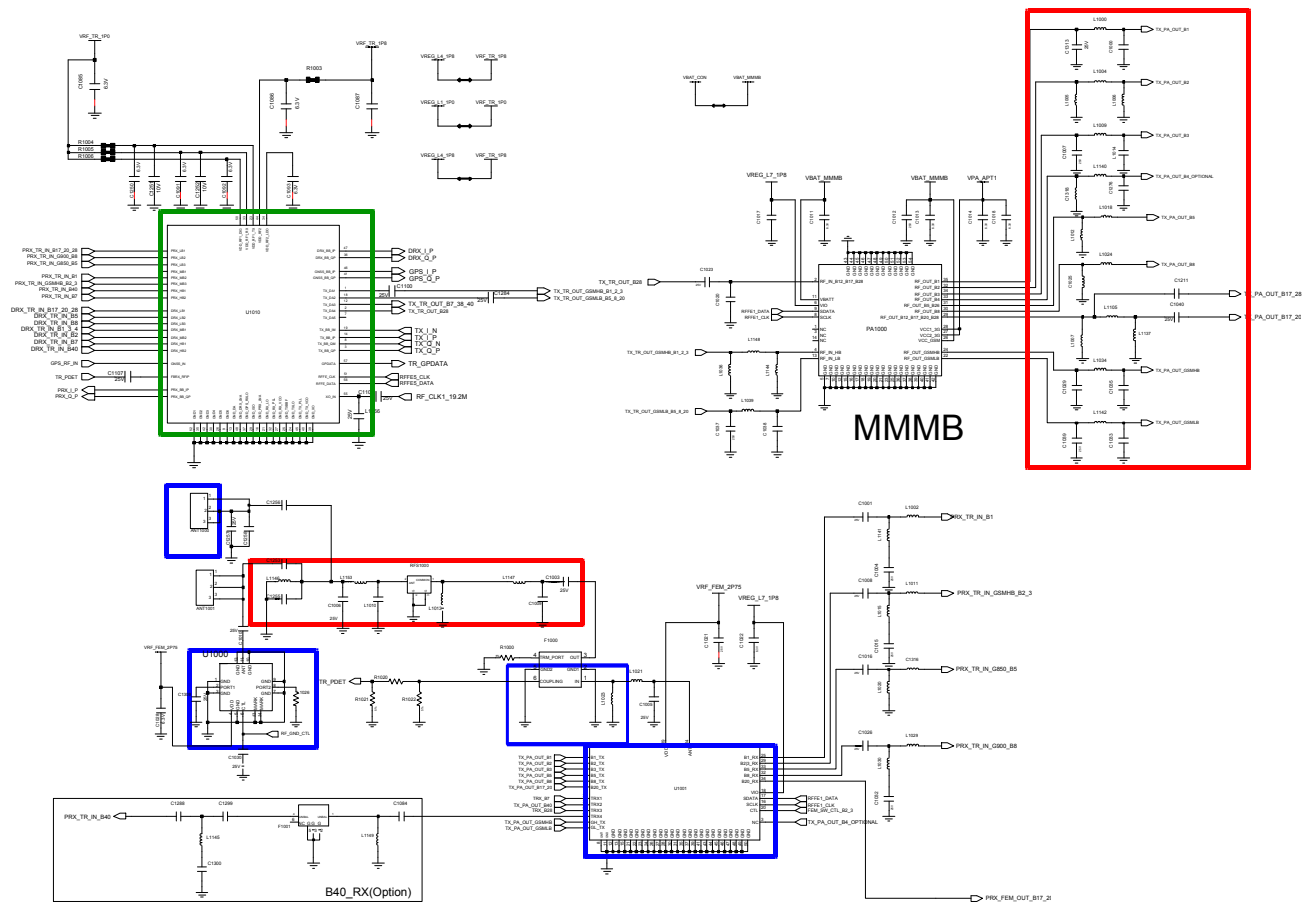
8-4-19. GSM 850,900,1800,1900 / WCDMA 1,2,5,8 / LTE 1,3,5,7,8,20 RX



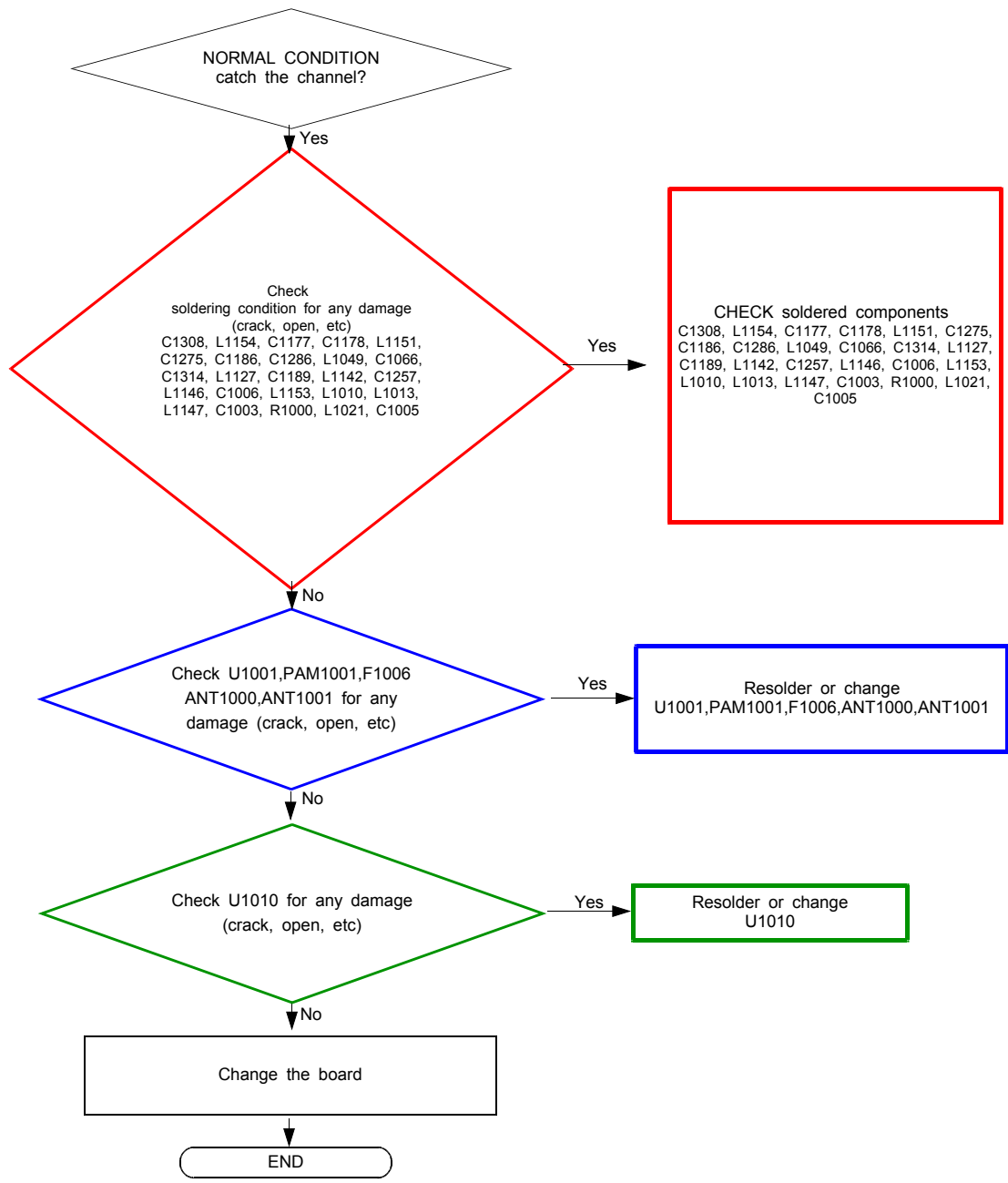


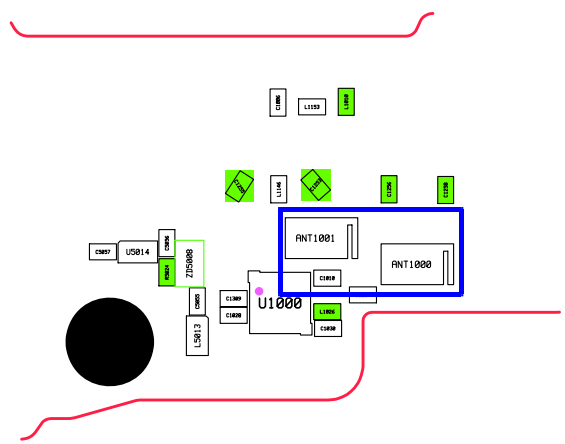
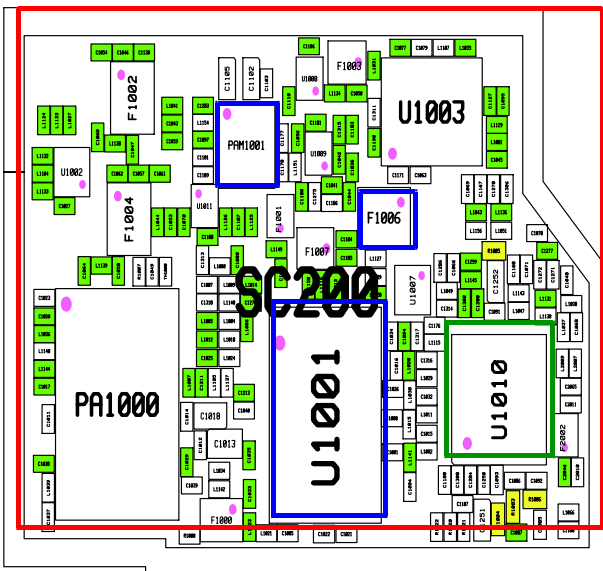
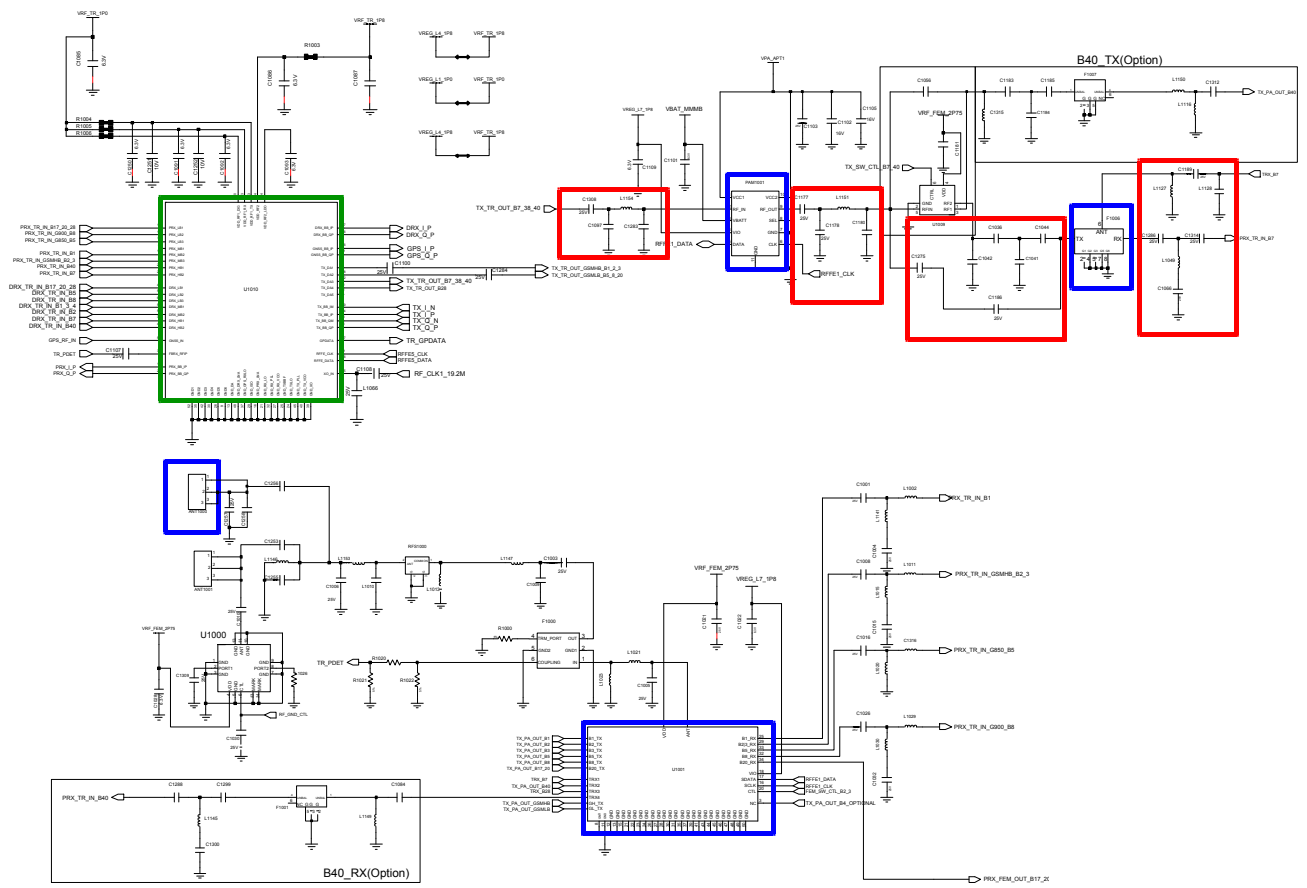
8-4-20. GSM 850,900,1800,1900 / WCDMA 1,2,5,8 / LTE 1,3,5,7,8,20 TX





8-4-21. LTE B7 TRX





8-5. Service Schematics

- NC point(Top view)
UCP3000(AP)

