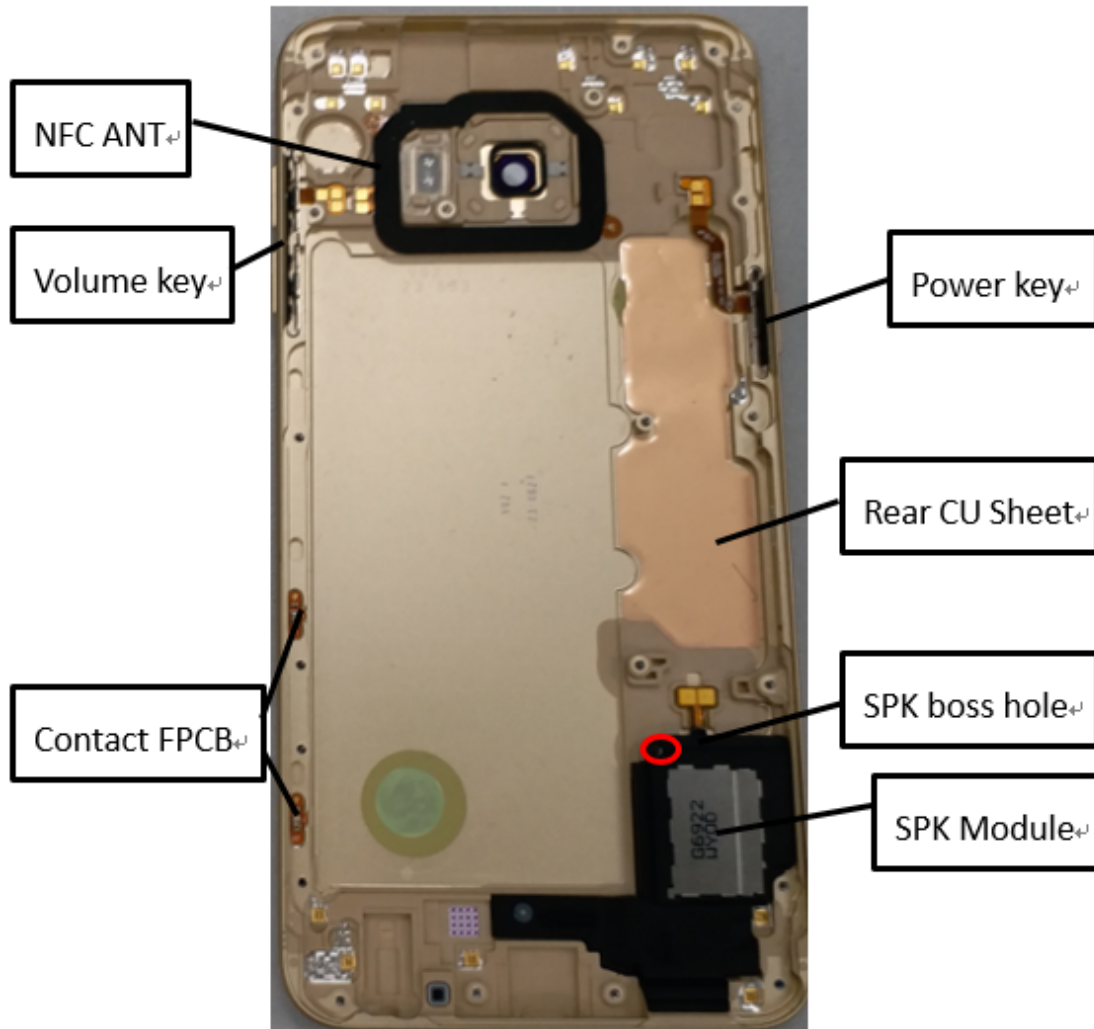


7. Level 2 Repair

7-1. Components on the Rear Case



7. Level 2 Repair

7-2. Pre-requisite

	
<p>Tweezers / Disass'y Stick / Screw Driver</p>	<p>Anti-static Gloves</p>
	
<p>Clean Swab</p>	<p>Ethyl Alcohol</p>
	
<p>OCTA Disassembly Holder</p>	<p>OCTA Disassembly Upper</p>
	
<p>Mobile Dryer</p>	<p>OCTA Attach JIG</p>

7. Level 2 Repair

7-4. Disassembly

1

Disassemble the SIM Tray from the SET



2

Put the set into Incubator(setting:80℃) for 5 minutes.



※ Caution

※ Caution

3

Detach the Back Cover from SET using Back Cover Disassembly Holder.



4

Disassemble the screw(18EA) from Rear



※ Caution

※ Caution

7. Level 2 Repair

5

Disassemble Rear front the Rear Assay



6

Disassemble the coaxial line from PBA



※ Caution

※ Caution

1) Do not use sharp tool.

7

Disassemble the screw from PBA.



8

Detach 4 Connector from PBA.



※ Caution

※ Caution

7. Level 2 Repair

9

Disassemble the Main PBA from Bracket



10

Disassemble the Home-key from Bracket



※ Caution

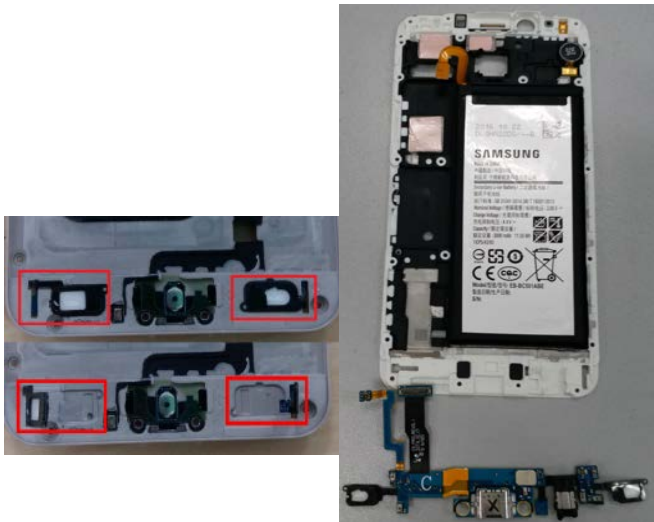
1) Be careful not to damage the FPCB.

※ Caution

1) Be careful not to damage the FPCB.

11

Disassemble the Sub PBA

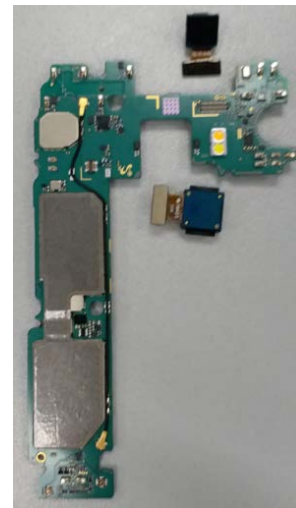


※ Caution

1) Be careful not to break the LED FPCB

12

Disassemble Main CAM and VT CAM



※ Caution

7. Level 2 Repair

13

Disassemble RCV, Motor, Battery from Bracket



※ Caution

14

Disassemble SPK from Rear



※ Caution

15

Disassembly completed



※ Caution

7. Level 2 Repair

7-5. Aassembly

1

Assemble RCV, Motor, Battery to the Bracket



2

Assemble Sub PBA to Bracket

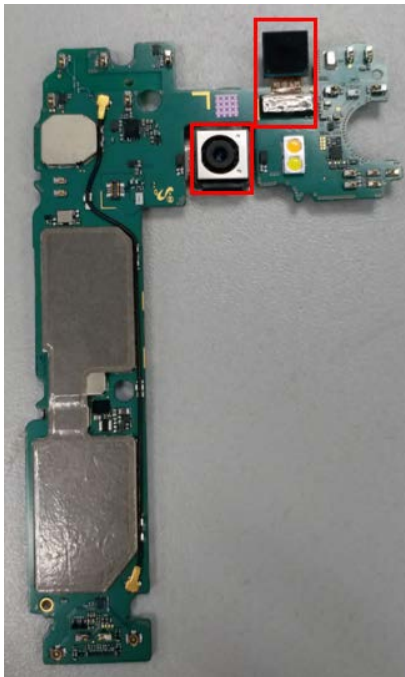


※ Caution

※ Caution

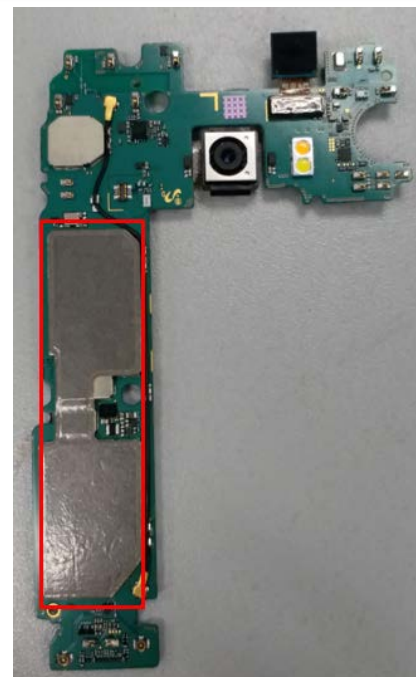
3

Assemble Main CAM and VT CAM to Main PBA.



4

Assemble the 2 coaxial line to Main PBA.



※ Caution

※ Caution
1) Don't use sharp tool.

7. Level 2 Repair

5

Assemble the Home-key on Bracket



※ Caution

6

Assemble the Main PBA to Bracket and connect the 4 connectors well.



※ Caution

7

Assemble 1 screw into Main PBA.



※ Caution

8

Assemble the 2 coaxial line to Main PBA.



※ Caution

7. Level 2 Repair

9

Assemble the SPK to Rear.



※ Caution

10

Assemble Bracket Assy and Rear Assy and Assemble 21 screw into Rear.



※ Caution

11

Assemble the OCTA and the SIM Tray.



※ Caution

12

Press SET using OCTA Press Jig (1N for 1 minute)



※ Caution