

7. Level 2 Repair

7-1. Components on the Rear Case



7. Level 2 Repair

7-2. Pre-requisite

	
Tweezers / Disass'y Stick / Screw Driver	Anti-static Gloves
	
Anti-static Mat	Hot Plate
	
A OCTA Disassembly Holder	OCTA Disassembly Upper
	
Ethyl Alcohol	Cotton Swab

7. Level 2 Repair

7-3. Parts which must be changed after repair

BOM description & part code	Image	Remarks
<p>TAPE DOUBLE FACE BACK COVER ALL [GH02-18491A]</p>		<p>Replace for Back Glass Or Finger print sensor repair</p>
<p>TAPE DOUBLE FACE FINGER DECO [GH02-18492A]</p>		

7. Level 2 Repair

7-4. Disassembly

1

Put the device in the chamber as following below heating condition.

- SOC 68%↓: 75°C/15~20 minute

- SOC 68%↑: 75°C/15~20 minute

※ Please confirm the heating condition released lastly, and follow it.

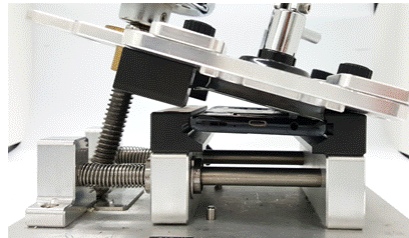


2

Detach the Back Glass. And Finger sensor.

1) Detach the left side of Back glass.

2) Detach the Finger sensor connector.



※ **Caution**
Be care of scratch.

※ **Caution**
Be care of scratch.

3

Unscrew 14 Points and disassemble SIM Tray from device.



4

Disassemble the HE Rear.

(Use disassemble hole left/right side of Rear to detach it)



Rear Top disassemble hole.

※ **Caution**
Be care of Rear damage.

※ **Caution**
1) Be care of scratch.
2) Be care of Rear and connector damage.

7. Level 2 Repair

5

Finally Disassemble The Rear.

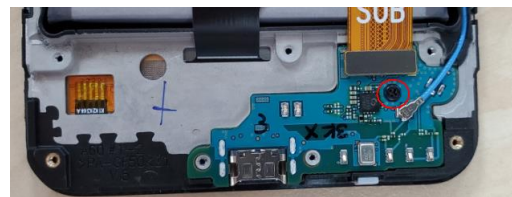
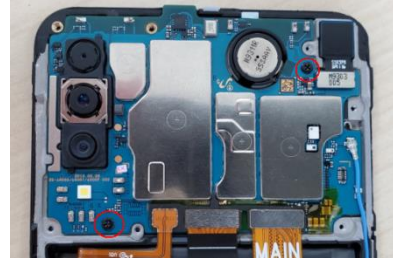


※ **Caution**

- 1) Be care of scratch.
- 2) Be care of Rear and connector damage.
- 3) Be careful not to damage the PBA.

6

Unscrew PBA 2point. And SUB PBA 1Point.



※ **Caution**

Be careful not to damage the PBA.

7

1 coaxial cable, Battery connector and the other connectors. (7 Points)



※ **Caution**

- 1) Be care of scratch.
- 2) Be care of connector/cable damage.

8

Disassemble Main PBA and Main FPCB.



※ **Caution**

Be care of Main PBA damage.

7. Level 2 Repair

9

Detach other components.



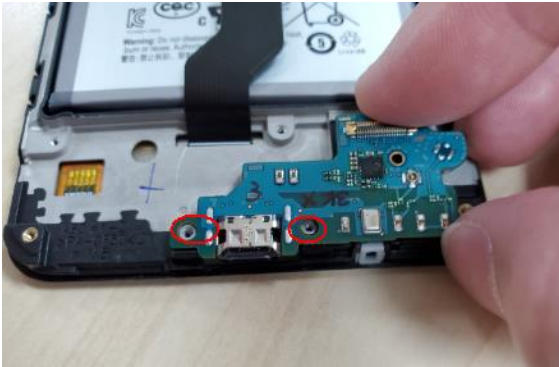
※ **Caution**
Be care of SUB PBA damage.

7. Level 2 Repair

7-5. Assembly

1

Attach SUB PBA on Front.



2

Screw 1 point in SUB PBA.
* Torque Value : 1.25kgf.cm \pm 4%



※ **Caution**
Be care of coaxial cable damage.

※ **Caution**
Be care of chip damage nearby screw point.

3

Attach components on Front. (Motor)



※ **Caution**
Be care of FPCB damage and tilt.

4

Attach Main PBA On Front.



※ **Caution**
Be care of PBA and Connector damage.

7. Level 2 Repair

5

Attach coaxial cable, Battery connect and the other connectors. Assemble Main FPCB and Front Camera.



6

Screw 2point in Main PBA.
* Torque Value : 1.25kgf.cm \pm 4%



※ **Caution**
Be care of FPCB damage.

※ **Caution**
Be care of PBA damage.

7

Assemble the REAR Assy in sequence.



8

Attach 14EA Screws on the Rear.
* Torque Value : 1.25kgf.cm \pm 4%



※ **Caution**
Be care of scratch and REAR damage.

※ **Caution**
Be care of scratch and tilt.

7. Level 2 Repair

9

Attach finger sensor on the TOP Rear.



※ Caution
 Be care of scratch and tilt.

10

Attach the back glass outside tape on the rear case.



※ Caution
 Be care of scratch and tilt.

11

Attach the finger tape on the back glass.



※ Caution
 Be care of scratch and tilt.

12

Attach the back glass on the Top REAR side.

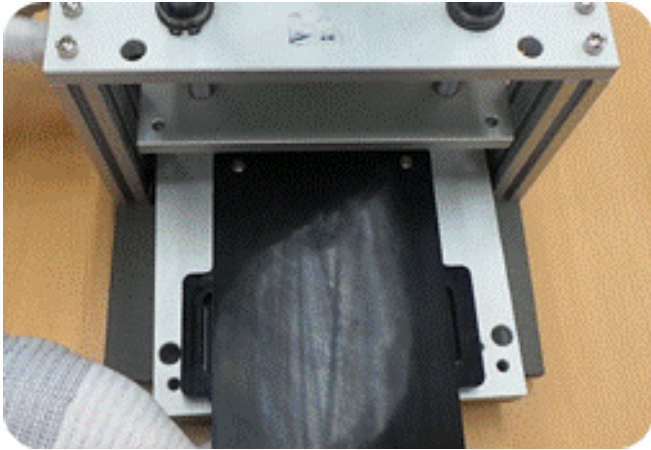


※ Caution
 Be care of scratch.

7. Level 2 Repair

13

Press Back Glass.
Pressing force : 5.5kgf/cm
Pressing time : 12s



※ **Caution**
Be care of scratch.