

7. Level 2 Repair

7-1. Components on the Rear Case





7. Level 2 Repair

7-2. Pre-requisite

	
Tweezers / Disass'y Stick / Screw Driver	Anti-static Gloves
	
Anti-static Mat	Hot Plate
	
A OCTA Disassembly Holder	OCTA Disassembly Upper
	
Ethyl Alcohol	Cotton Swab

7. Level 2 Repair

7-3. Parts which must be changed after repair

BOM A code	Image	Remarks
<p>SVC BACK GLASS OUT [GH81-14351A]</p>		<p>Replace for Back Glass repair</p>
<p>SVC BACK GLASS IN [GH81-14352A]</p>		

7. Level 2 Repair

7-4. Disassembly

<div data-bbox="124 297 204 360" style="border: 1px solid black; padding: 2px; width: 40px; text-align: center; margin-bottom: 10px;">1</div> <div data-bbox="220 297 743 421" style="border: 1px solid black; padding: 5px;"> <p>1) Put the device in the chamber for 10~20 minutes under 65~75°C. 2) Detach the Back Glass.</p> </div> <div data-bbox="188 497 735 1064"> </div>	<div data-bbox="815 297 895 360" style="border: 1px solid black; padding: 2px; width: 40px; text-align: center; margin-bottom: 10px;">2</div> <div data-bbox="922 297 1469 383" style="border: 1px solid black; padding: 5px;"> <p>Unscrew 12 Point and disassemble SIM Tray1, 2 from device</p> </div> <div data-bbox="938 517 1442 1057"> </div>
<p>※ Caution 1) Be care of scratch</p>	<p>※ Caution 1) Be care of scratch</p>
<div data-bbox="124 1176 204 1238" style="border: 1px solid black; padding: 2px; width: 40px; text-align: center; margin-bottom: 10px;">3</div> <div data-bbox="188 1176 783 1261" style="border: 1px solid black; padding: 5px;"> <p>Disassemble Upper Rear. (Use disassemble hole left side of Rear to detach it)</p> </div> <div data-bbox="236 1288 560 1848"> </div>	<div data-bbox="815 1176 895 1238" style="border: 1px solid black; padding: 2px; width: 40px; text-align: center; margin-bottom: 10px;">4</div> <div data-bbox="879 1176 1481 1261" style="border: 1px solid black; padding: 5px;"> <p>Finally Disassemble Rear of bottom side. (Use disassemble hole left side of Rear to detach it)</p> </div> <div data-bbox="1046 1296 1362 1841"> </div>
<p>※ Caution 1) Be care of Rear damage</p>	<p>※ Caution 1) Be care of Rear and connector damage</p>

7. Level 2 Repair

5

Unscrew PBA 3 points.



6

Detach Battery connect and the other connectors. (7 Points, except for Front Camera connector)



※ Caution

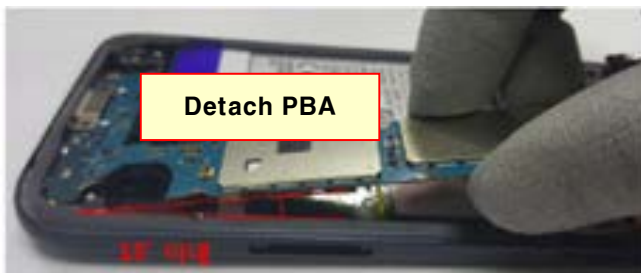
1) Be careful not to damage the PBA

※ Caution

1) Be care of connector/cable damage

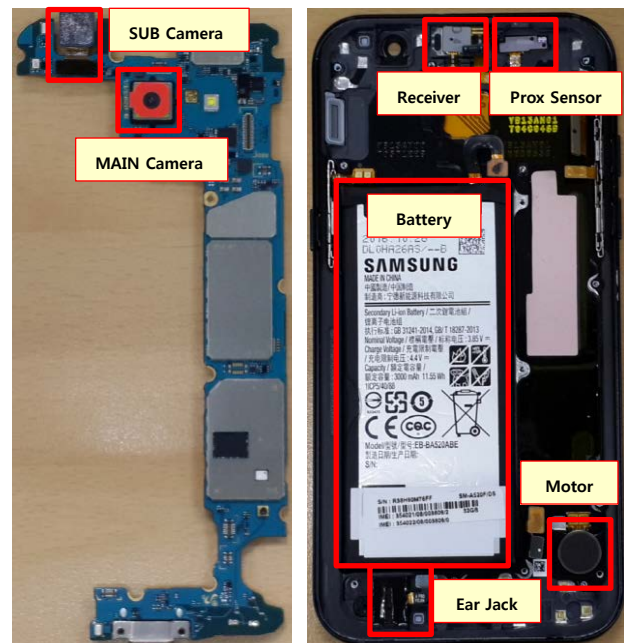
7

Detach main PBA from Front.



8

Detach other components.



※ Caution

1) Be care of PBA damage

※ Caution

1) Be care of several kinds of damage

7. Level 2 Repair

7-5. Assembly

<p>1 Attach components on Front. (RCV module, Sensor FPCB, Motor) and then Press RCV.</p>	<p>2 Attach PBA assy In Front Assy. (PBA+ Front)</p> <p style="text-align: center;">PCB 15° angle</p>
<p>※ Caution</p> <ol style="list-style-type: none"> 1) Be care of FPCB damage and tilt 2) Be care of press power/time 	<p>※ Caution</p> <ol style="list-style-type: none"> 1) Be care of chip damage nearby screw point
<p>3 Attach Battery connect and the other connectors. (7 Points) Attach Front Camera on PBA.</p>	<p>4 Screw PBA 3 points. (Torque:1.2 Kgf·cm±7%)</p>
<p>※ Caution</p> <ol style="list-style-type: none"> 1) Be care of connector damage. 	<p>※ Caution</p> <ol style="list-style-type: none"> 1) Be careful not to damage the PBA

7. Level 2 Repair

5

Assemble Rear of bottom side.



6

Assemble Upper Rear.



⚠ Caution

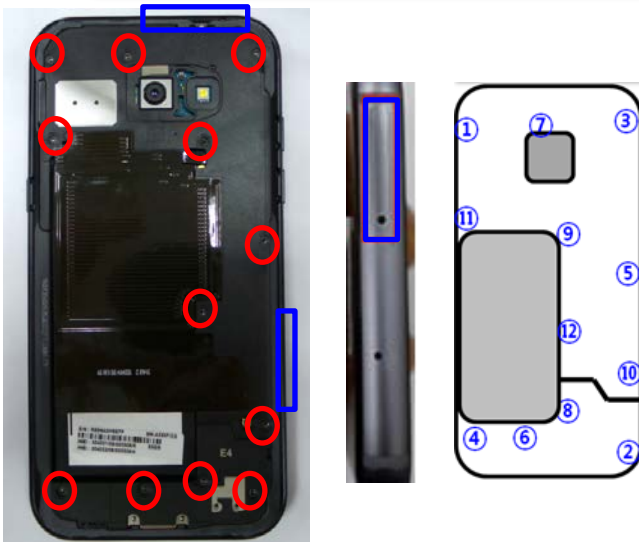
1) Be care of scratch and REAR damage

⚠ Caution

1) Be care of scratch and REAR damage

7

Screw 12 Point and Assemble SIM Tray1, 2 on device
(Torque:1.3 Kgf·cm±7%)



8

Attach Back Glass.



⚠ Caution

1) Be care of chip damage nearby screw point.

⚠ Caution

1) Be care of scratch and tilt.

7. Level 2 Repair

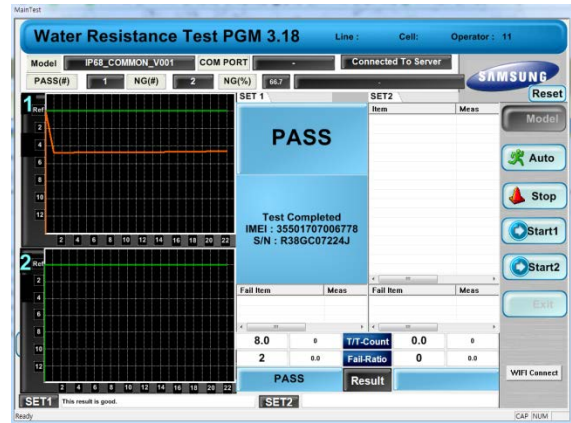
9

Press Back Glass.(1N for 1minute)



10

Do water resistance test(WRT)



※ Caution

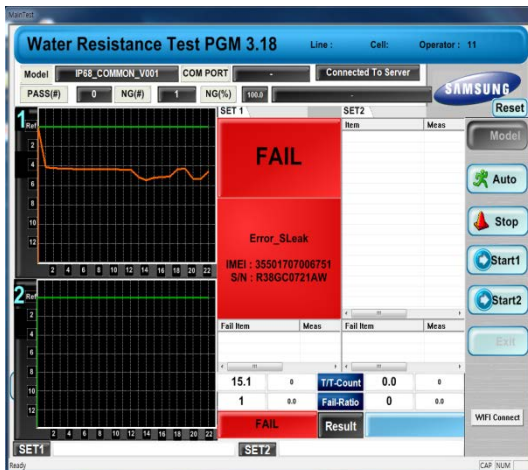
1) Be care of scratch.

※ Caution

1) Be care of scratch.

11

If fail WRT doing debugging(sealing or etc)

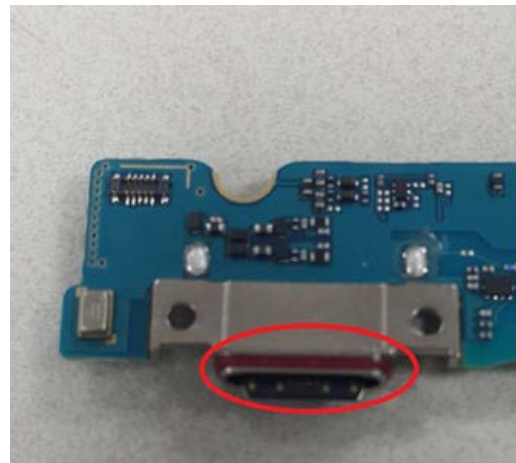


※ Caution

1) Be care of scratch.

12

If connector problem, disassemble & remove gasket



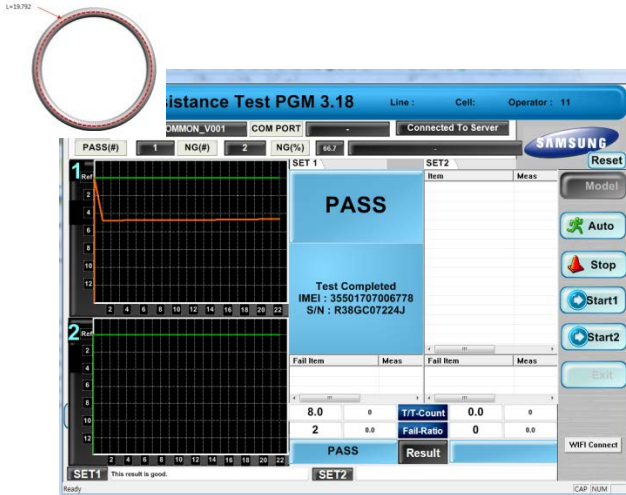
※ Caution

1) Be care of PBA damage

7. Level 2 Repair

13

Use O-ring(GzH81-14271A) on IF CON
Reassemble & Re WRT

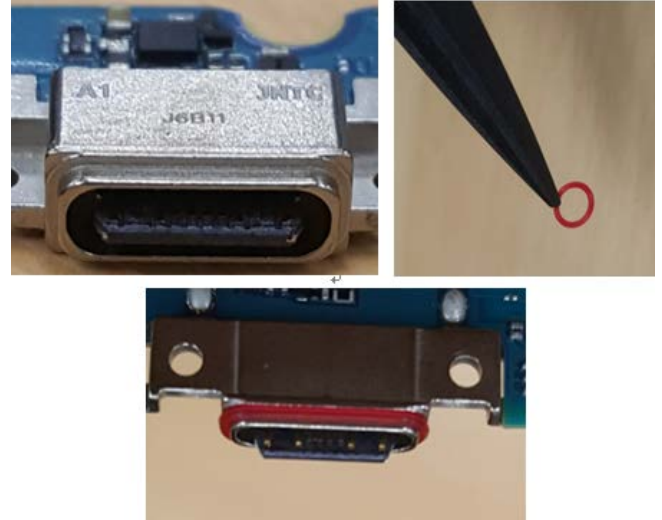


※ Caution

1) Be care of scratch.

14

※ Remove USB Dispensing on PBA.
Insert O-Ring on PBA.



※ Caution

1) Be careful not to damage the PBA