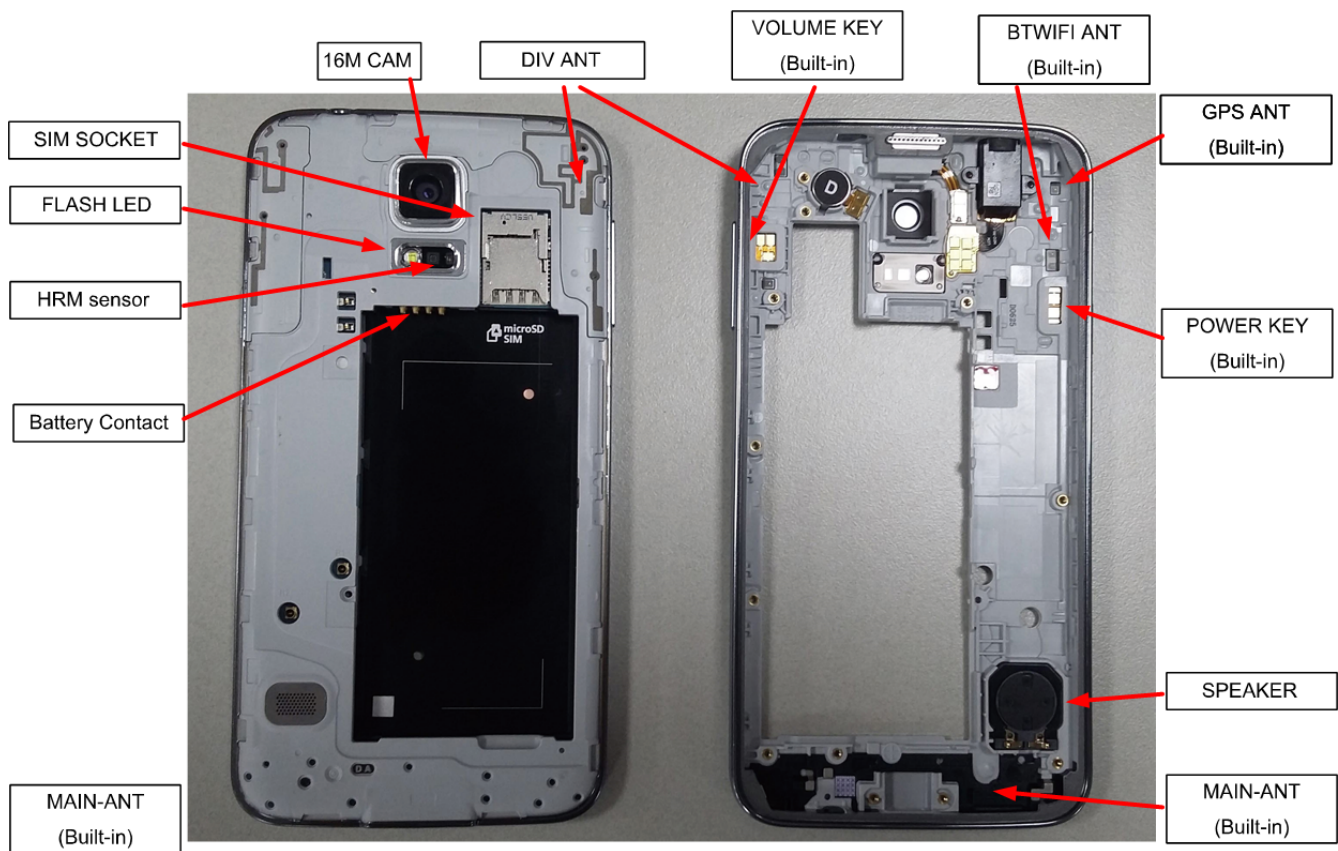


7. Level 2 Repair

7-1. Components on the Rear Case






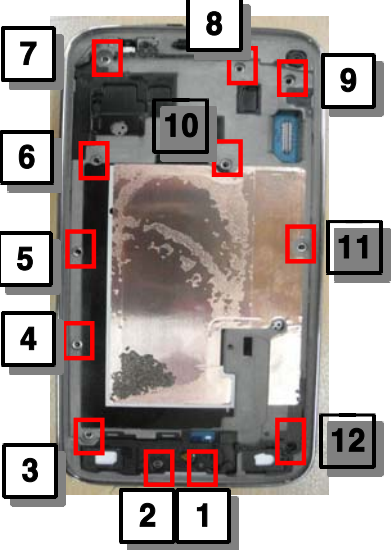
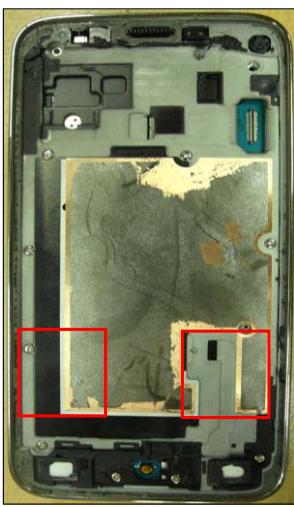
7-2. Pre-requisite

	
Tweezers / Disass'y Stick / Screw Driver	Anti-static Gloves
	
Anti-static Mat	Glass Absorber
	
OCTA Disassembly Holder	OCTA Disassembly Upper
	
Ethyl Alcohol	Clean Swab

7-3. Parts which must be changed after repair

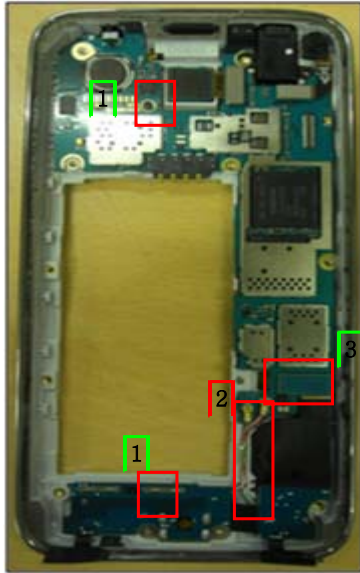
BOM Discription	Picture	Remarks
<p>A/S-MAIN WINDOW TAPE_R/KIT</p> <p>[GH02-10988A]</p>		<p>Replace when repair Front part</p>
<p>Bracket CU sheet</p> <p>[GH02-06766A]</p>		
<p>A/S-Touch Key Ass'y_R/KIT)</p> <p>[GH81-13158A]</p>		

7-4. Disassembly

<p>1</p> <p>1) Displace the temperature chamber for 5 minute 2) Detach the OCTA using Vaccum jig</p>  	<p>2</p> <p>1) Unscrew the 1 points.</p> 
<p>* Caution</p> <p>1) Detach the Bracket Cu tape carefully from the OCTA Cu sheet using Glass absorber and holder. 2) Be careful not to separate LCD from TSP.</p>	<p>*Caution</p> <p>1) Be care of damage to Connector. 2) It pushes this part at disassembly, and lift it</p>
<p>3</p> <p>1) Unscrew the 12 points.</p> 	<p>4</p> <p>1) Detach the Touch Key From Bracket 2) Detach the Bracket Assy from Rear.</p> 
<p>* Caution</p> <p>1) Be care of scratch and molding damage.</p>	<p>* Caution</p> <p>1) Be care of damage to Connector. 2) It pushes this part at disassembly, and lift it</p>

5

- 1) Disassemble 2 coaxial cable.
- 2) Unscrew the 2 points.
- 3) Disassemble SUB PBA Connector.



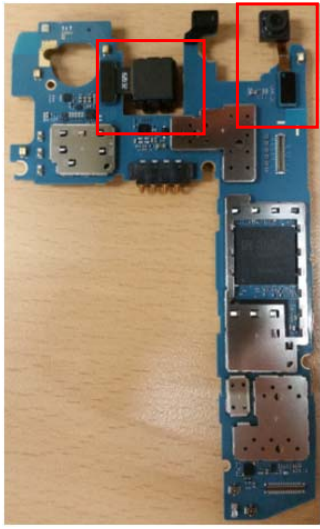
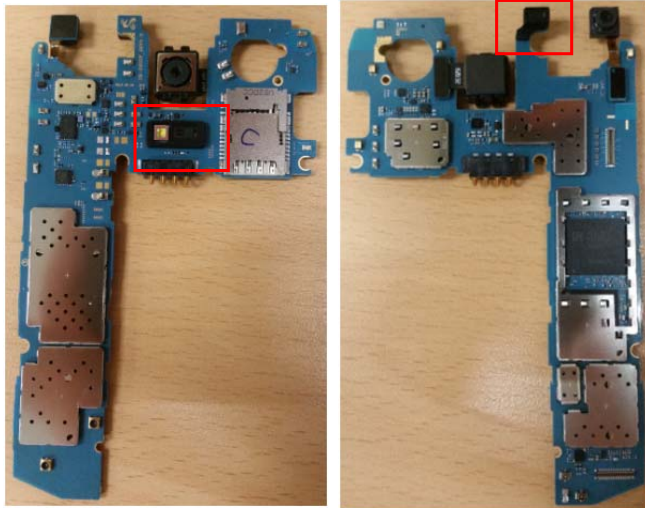
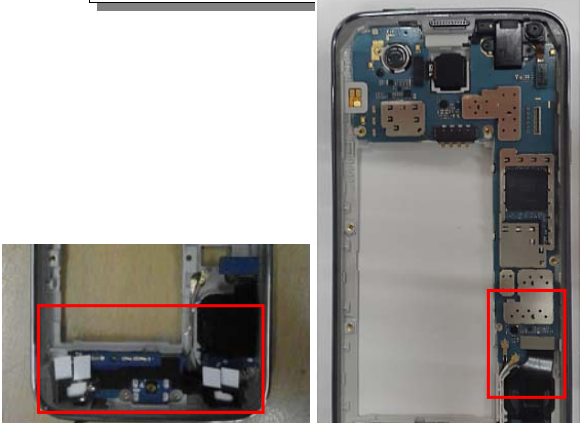
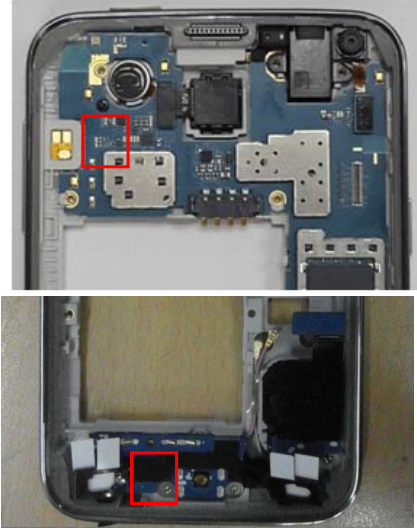
1) Be care of damage to the Home key FPCB, SUB FPCB, coaxialcable.

6

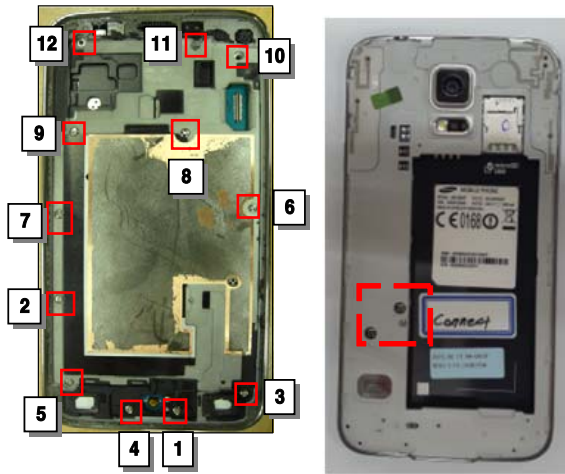
- 1) Separate the PBA from Bracket.



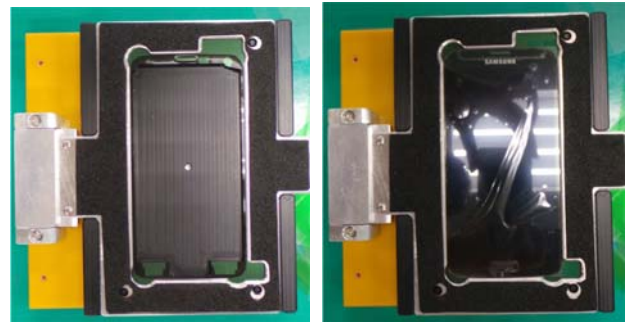
1) Be care of scratch and antenna contact damage.

<p>1 Assemble the MEGA CAM,VT CAM on PBA</p> 	<p>2 Assemble HRM, PROXIMITY, LIGHT sensor rubber</p> 
<p>* Caution 1) Be care of damage to the part</p>	<p>* Caution 1) Be care of damage to PBA</p>
<p>3 Assemble SUB PBA and PBA,coaxial cable(black -> White),connector</p>  <p>Black coaxial cable : assemble lower White coaxial cable : assmblee upper</p>	<p>4 Assemble bracket and screw</p> 
<p>* Caution 1) Be care of damage to the coaxial cable</p>	<p>* Caution 1) Be care of damage to the each module 2) PBA Screw Torque : 1.1 Kgf·cm 3) Sub PBA Screw Torque : 1.0 Kgf·cm</p>

5 Assemble bracket Screw and Rear screw



6 1) Attach the OCTA tape



*** Caution**
 1) Be care of damage to each part.
 2) SCREW POINT 12 EA and Rear Screw 1EA
 3) Torque : 1.2 Kgf · cm

*** Caution**
 1) Be care of scratch and molding damage.

7 1) Assamble the OCTA on the Rear Assy.



8 1) Assamble the Home key connector ,screw



*** Caution**
 1) Be care of scratch and molding damage.

*** Caution**
 - Pressure : 5~6 kgf/cm²
 - Press time : 11.7 sec