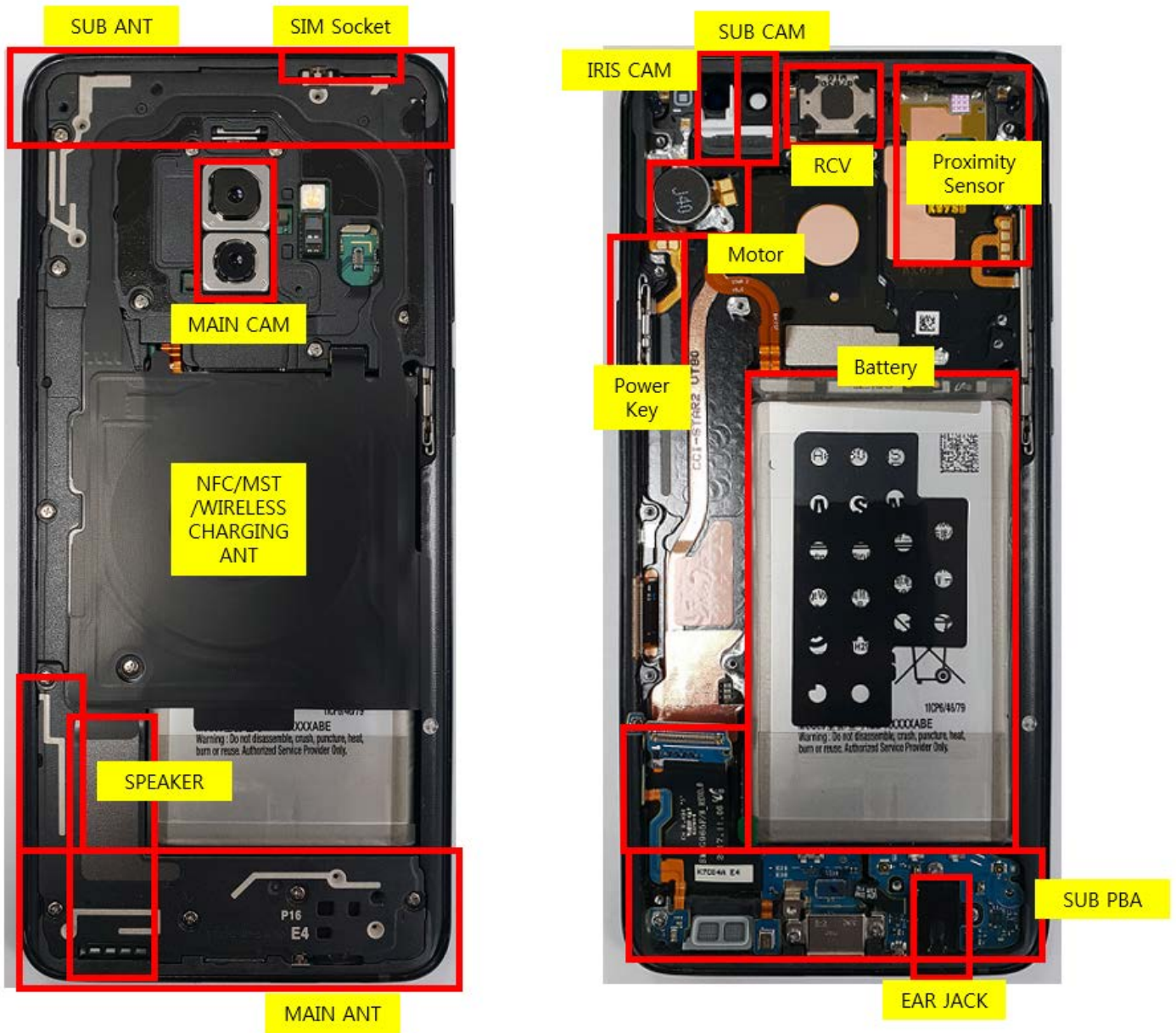


7. Level 2 Repair

7-1. Components on the Rear Case



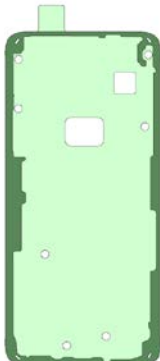
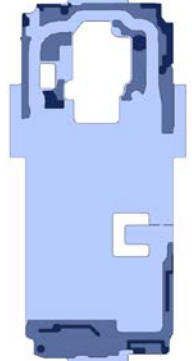
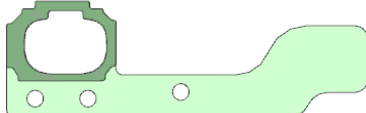
7. Level 2 Repair

7-2. Pre-requisite

	
<p>Tweezers / Disass'y Stick / Screw Driver</p>	<p>Anti-static Gloves</p>
	
<p>Anti-static Mat</p>	<p>Hot Plate</p>
	
<p>A OCTA Disassembly Holder</p>	<p>OCTA Disassembly Upper</p>
	
<p>Ethyl Alcohol</p>	<p>Cotton Swab</p>


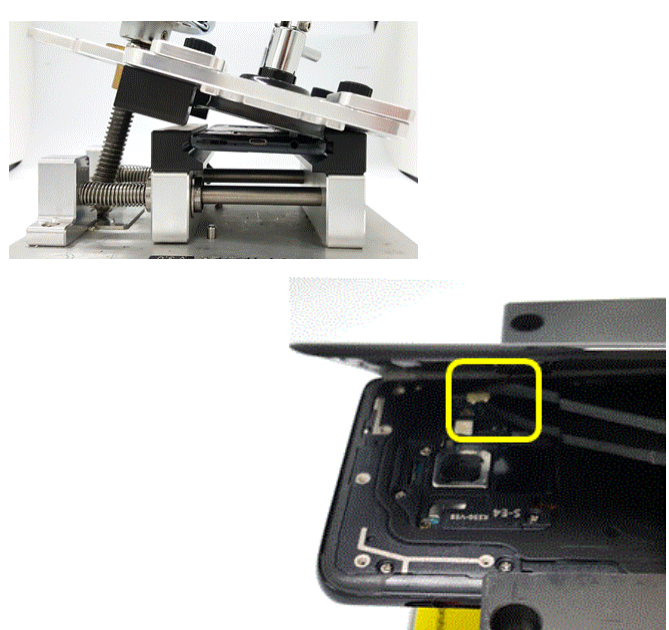


7. Level 2 Repair

7-3. Parts which must be changed after repair

BOM description & part code	KIT CODE	Image	Remarks
A/S-SVC TAPE BG WP OUTER (Common) [GH81-15386A]	A/S REWORK KIT- SM-G9650 (CHN/LA) [GH82-15966A] Include Waterproof Tape KIT Package - BG WP Outer Tape - BG INNER Tape - FP Module Tape - Camera Sealing Tape 1EA - MIC Sealing Tape 2EA		Replace for Back Glass repair
A/S-SVC TAPE BG INNER (CHN/LA) [GH81-15433A]			
TAPE FP MODULE [GH02-15926A]			Replace for Back Glass Or Finger print sensor repair

7. Level 2 Repair

7-4. Disassembly

<p>1</p> <p>Put the device in the chamber as following below heating condition</p> <ul style="list-style-type: none"> - SOC 68%↓: 70 °C/10~20 minute - SOC 68%↑: 70 °C/10~20 minute <p>※ Please confirm the heating condition released lastly, and follow it.</p>  <p>Put the device into Mobile Dryer.(70°C/10mins)</p> <p>Put the device in to HOT PLATE.(70°C/10mins)</p>	<p>2</p> <p>Detach the Back Glass. And Finger sensor</p> <ol style="list-style-type: none"> 1) Detach the left side of Back glass 2) Detach the Finger sensor connector 
<p>※ Caution Be care of scratch</p>	<p>※ Caution Be care of scratch</p>
<p>3</p> <p>Unscrew 16 Point and disassemble SIM Tray from device</p> 	<p>4</p> <p>Disassemble Upper Rear. (Use disassemble hole left/right side of Rear to detach it)</p>  <p>Rear Top disassemble hole.</p>
<p>※ Caution Be care of Rear damage</p>	<p>※ Caution</p> <ol style="list-style-type: none"> 1) Be care of scratch 2) Be care of Rear and connector damage

7. Level 2 Repair

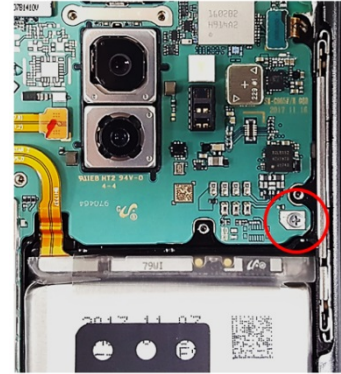
5

Finally Disassemble Rear of bottom side.
(Use disassemble hole right side of Rear to detach it)



6

Unscrew PBA 1 points.



⚠ Caution

- 1) Be care of scratch
- 2) Be care of Rear and connector damage
- 3) Be careful not to damage the PBA

⚠ Caution

Be careful not to damage the PBA

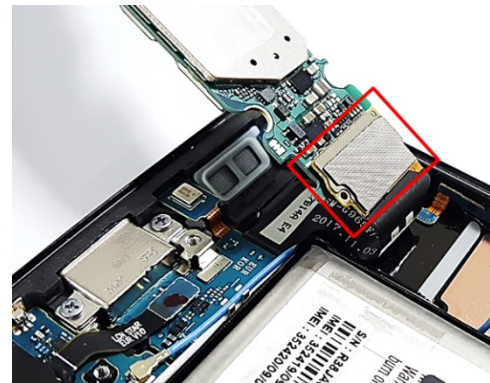
7

2 coaxial cable, Battery connect and the other connectors. (8 Point)



8

Detach SUB PBA connector



⚠ Caution

- 1) Be care of scratch
- 2) Be care of connector/cable damage

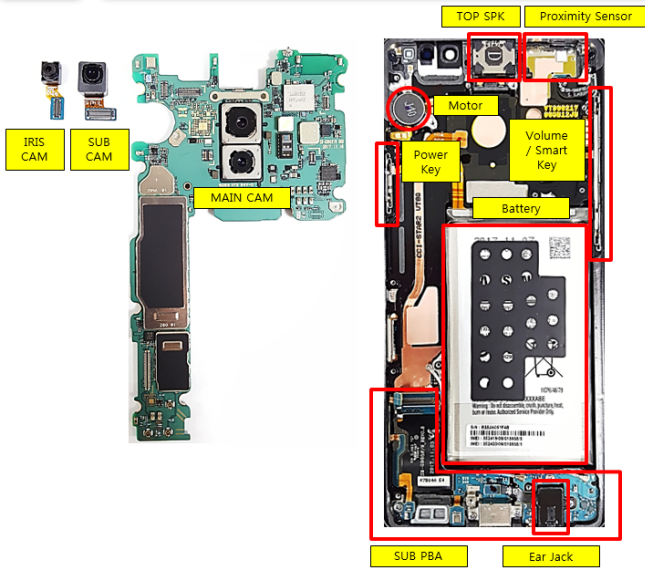
⚠ Caution

- 1) Be care of FPCB damage
- 2) Be care of SUB PBA connector

7. Level 2 Repair

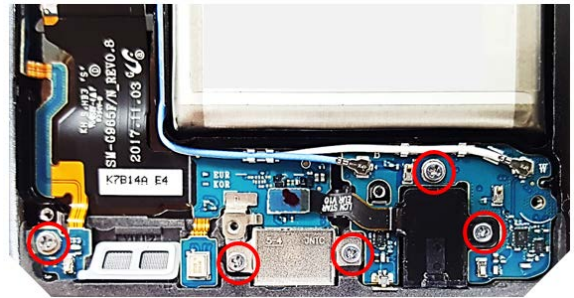
9

Detach other components.



10

Unscrew SUB PBA 5points



⚠ Caution

Be care of several kinds of damage

⚠ Caution

Be careful not to damage the SUB PBA

11

Detach Ear Jack

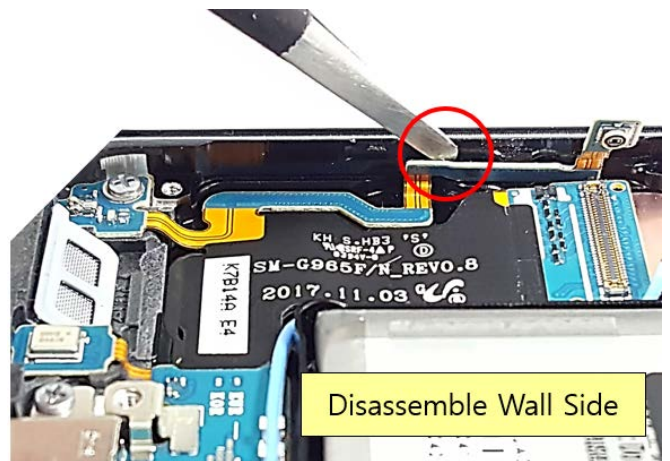


⚠ Caution

- 1) Be care of SUB PBA damage
- 2) Be care of Ear jack connector

12

Detach SUB PBA (1/4)



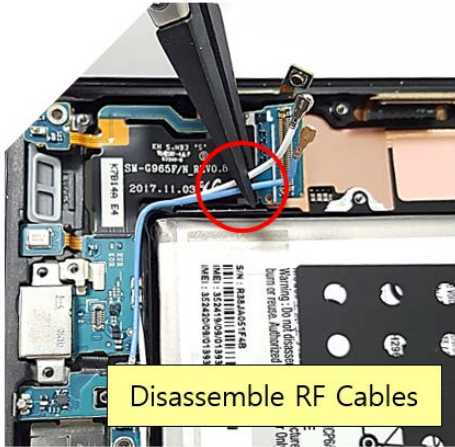
⚠ Caution

Be care of SUB PBA damage

7. Level 2 Repair

13

Detach SUB PBA (2/4)

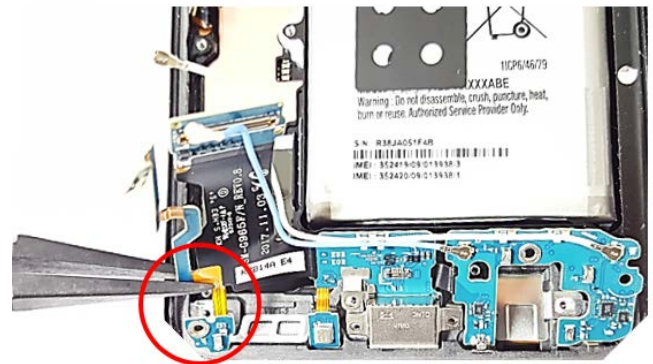


Disassemble RF Cables

⚠ Caution
Be care of SUB PBA damage

14

Detach SUB PBA (3/4)

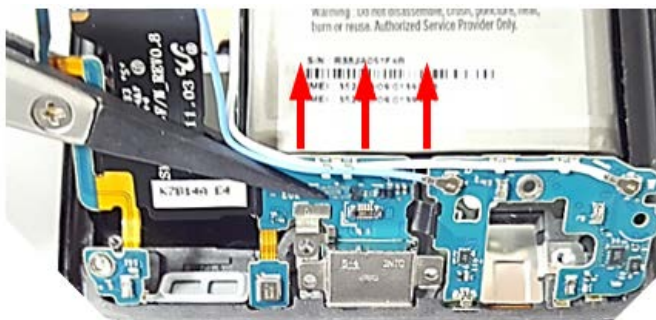


Disassemble Left side

⚠ Caution
Be care of SUB PBA damage

15

Detach SUB PBA (2/4)


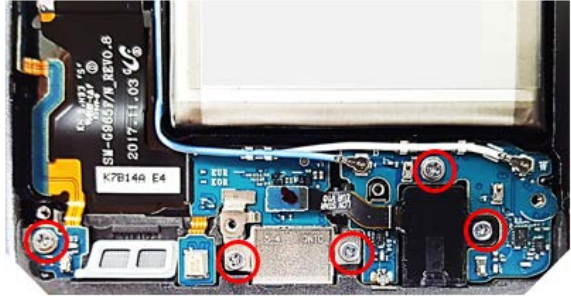
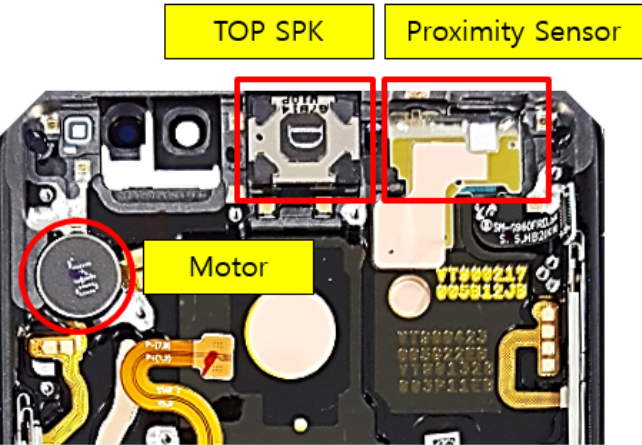



Disassemble Up side

⚠ Caution
Be care of SUB PBA damage

7. Level 2 Repair

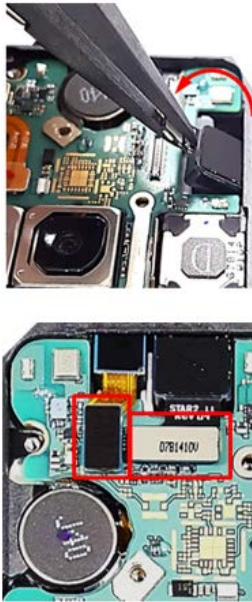
7-5. Assembly

<div data-bbox="124 342 758 405" style="border: 1px solid black; padding: 5px;"> <p>1 Attach SUB PBA and Ear jack on Front.</p> </div> <div data-bbox="130 521 715 815">  </div>	<div data-bbox="802 342 1500 405" style="border: 1px solid black; padding: 5px;"> <p>2 Screw 5point in SUB PBA. Torque 1.5Kgf · cm</p> </div> <div data-bbox="863 521 1436 815">  </div>
<p>※ Caution Be care of coaxial cable damage</p>	<p>※ Caution Be care of chip damage nearby screw point.</p>
<div data-bbox="124 1160 758 1240" style="border: 1px solid black; padding: 5px;"> <p>3 Attach components on Front. (TOP SPK, Sensor FPCB, Motor)</p> </div> <div data-bbox="130 1305 774 1747">  </div>	<div data-bbox="802 1160 1500 1240" style="border: 1px solid black; padding: 5px;"> <p>4 Attach PBA assy In Front Assy. (PBA+ Front)</p> </div> <div data-bbox="954 1305 1337 1762">  </div>
<p>※ Caution 1) Be care of FPCB damage and tilt 2) Be care of press power/time</p>	<p>※ Caution 1) Be care of Push SUB PBA connector. 2) Be care of components FPCB.</p>

7. Level 2 Repair

5

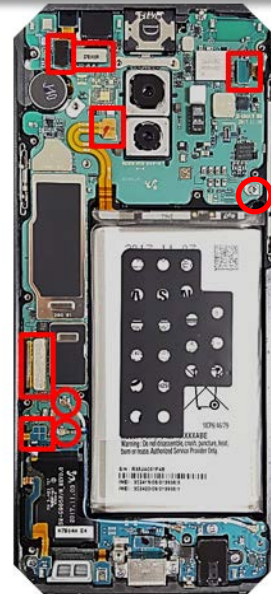
Attach Front CAM and Iris CAM on PBA.



※ Caution
Be care of press power/time

6

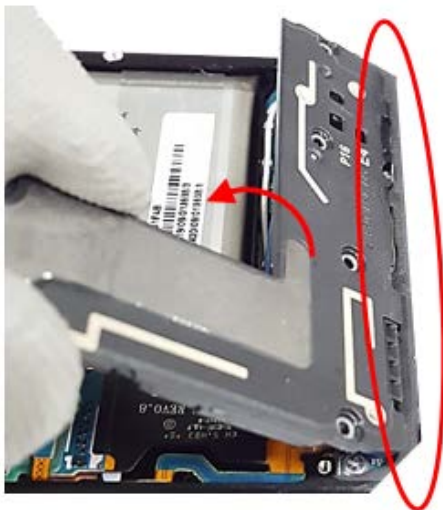
Screw 1point(1.3 Kgf·cm ±0.1) and Attach 2 coaxial cable, Battery connect and the other connectors. (8 Point)



※ Caution
Be care of FPCB and Y-OCTA damage

7

Assemble the Bottom REAR in sequence.



※ Caution
Be care of scratch and REAR damage

8

Assemble the TOP+MID REAR Assy in sequence.



※ Caution
Be care of scratch and REAR damage

7. Level 2 Repair

9

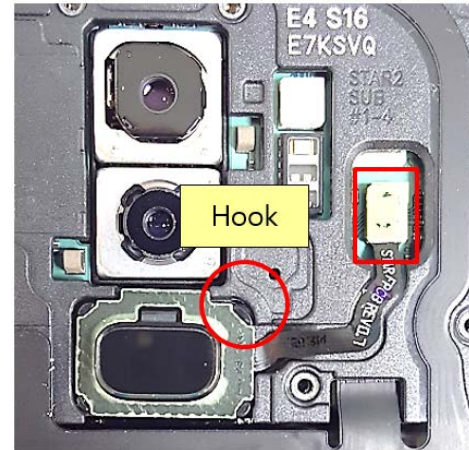
screw 16 Point and disassemble SIM Tray from device.

* Screw Torque : 1.3Kgf



10

Attach the finger sensor on the REAR and Assemble the finger sensor on the PBA



※ Caution

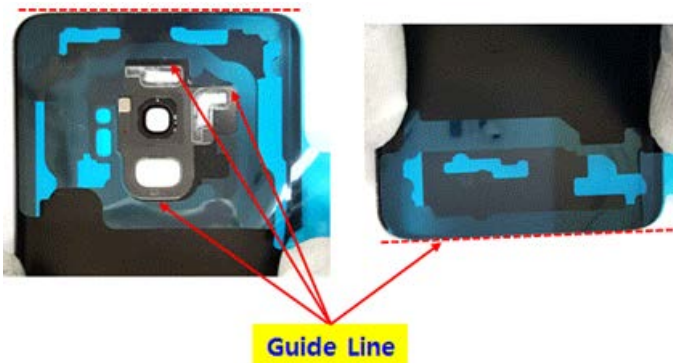
Be care of scratch and REAR damage

※ Caution

Be care of scratch and tilt.

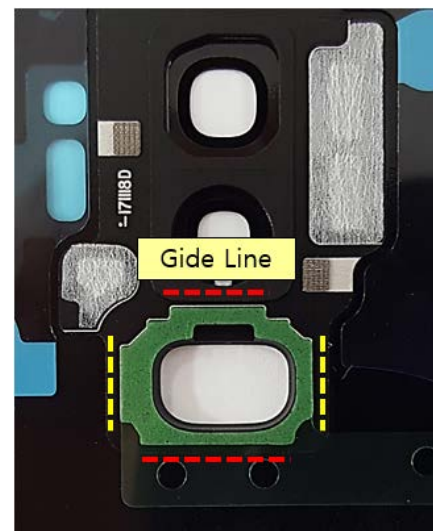
11

Attach the back glass inner tape on the backglass



12

Attach the finger tape on the back glass.



※ Caution

Be care of scratch and tilt.

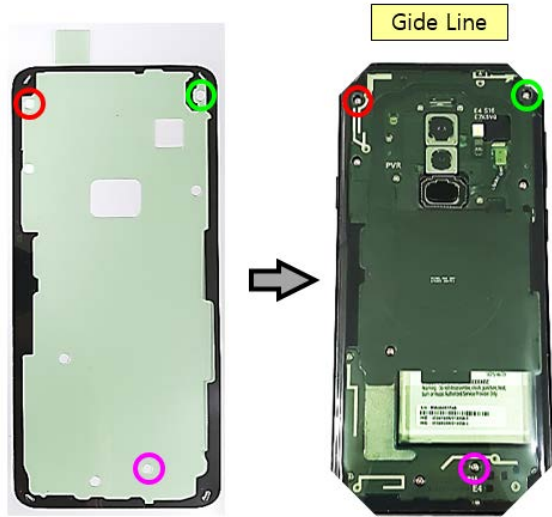
※ Caution

Be care of scratch and tilt.

7. Level 2 Repair

13

Attach the back glass outside tape on the rear case



14

Attach the back glass on the REAR side.

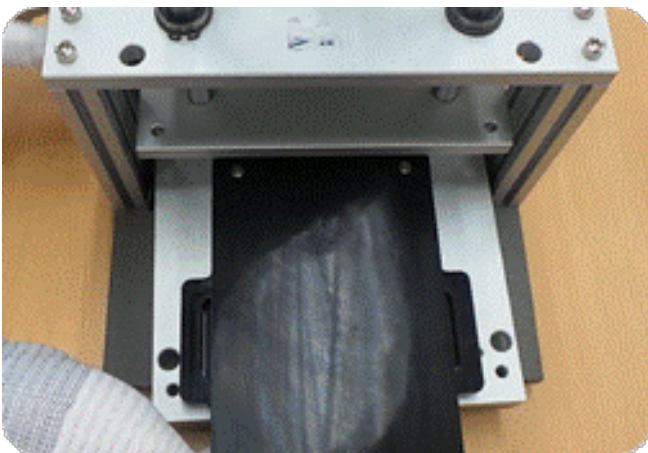


※ Caution
Be care of scratch and tilt.

※ Caution
Be care of scratch and tilt.

15

Press Back Glass.
Pressing force : 1 N
Pressing time : 1 minute



※ Caution
Be care of scratch.