

2. Specification

2-1. GSM General Specification

	GSM850	EGSM 900	DCS1800	PCS1900	WCDMA 2100	WCDMA 1900	WCDMA 850
Freq. Band[MHz] Uplink/ Downlink	824.2~848.8 869.2~893.8	876.2~914.8 921.2~959.8	1710.2~1784.8 1805.2~1879.8	1850.2~1909.8 1930.2~1989.8	1922.4~1977.6 2112.4~2167.6	1852.4~1907.6 1932.4~1987.6	826.4~846.6 871.4~891.6
ARFCN range	128~251	0~124 & 975~1023	512~885	512~810	UL: 9612~9888 DL: 10562~10838	UL: 9262~9538 DL: 9662~9938	UL: 4132~4233 DL: 4357~4458
Tx/Rx spacing	45MHz	45MHz	95MHz	80MHz	190MHz	80MHz	45MHz
Mod. Bit rate/ Bit Period	270.833kbps 3.692us	270.833kbps 3.692us	270.833kbps 3.692us	270.833kbps 3.692us	3.84Mcps	3.8Mcps	3.84Mcps
Time Slot Period/ Frame Period	576.9us 4.615ms	576.9us 4.615ms	576.9us 4.615ms	576.9us 4.615ms	FrameLength: 10ms Slotlength: 0.667ms	FrameLength: 10ms Slotlength: 0.667ms	FrameLength: 10ms Slotlength: 0.667ms
Modulation	0.3GMSK	0.3GMSK	0.3GMSK	0.3GMSK	QPSKHQPSK	QPSKHQPSK	QPSKHQPSK
MS Power	33dBm~5dBm	32.5dBm~5dBm	29.5dBm~0dBm	29.5dBm~0dBm	24dBm~ -50dBm	24dBm~ -50dBm	24dBm~ -50dBm
Power Class	5pcl ~ 19pcl	5pcl ~ 19pcl	0pcl ~ 15pcl	0pcl ~ 15pcl	3(max+24dBm)	3(max+24dBm)	3(max+24dBm)
Sensitivity	-102dBm	-102dBm	-100dBm	-100dBm	-106.7dBm	-106.7dBm	-106.7dBm
TDMA Mux	8	8	8	8	8	8	8
Cell Radius	35Km	35Km	2Km	2Km	2Km	2Km	2Km

2. Specification

2-2. GSM Tx Power Class

TX Power control level	GSM850	TX Power control level	EGSM900	TX Power control level	DCS1800	TX Power control level	PCS1900
5	33±2 dBm	5	32.5±2 dBm	0	29.5±3 dBm	0	29.5±3 dBm
6	31±2 dBm	6	31±2 dBm	1	28±3 dBm	1	28±3 dBm
7	29±2 dBm	7	29±2 dBm	2	26±3 dBm	2	26±3 dBm
8	27±2 dBm	8	27±2 dBm	3	24±3 dBm	3	24±3 dBm
9	25±2 dBm	9	25±2 dBm	4	22±3 dBm	4	22±3 dBm
10	23±2 dBm	10	23±2 dBm	5	20±3 dBm	5	20±3 dBm
11	21±2 dBm	11	21±2 dBm	6	18±3 dBm	6	18±3 dBm
12	19±2 dBm	12	19±2 dBm	7	16±3 dBm	7	16±3 dBm
13	17±2 dBm	13	17±2 dBm	8	14±3 dBm	8	14±3 dBm
14	15±2 dBm	14	15±2 dBm	9	12±4 dBm	9	12±4 dBm
15	13±2 dBm	15	13±2 dBm	10	10±4 dBm	10	10±4 dBm
16	11±3 dBm	16	11±3 dBm	11	8±4 dBm	11	8±4 dBm
17	9±3dBm	17	9±3dBm	12	6±4 dBm	12	6±4 dBm
18	7±3 dBm	18	7±3 dBm	13	4±4 dBm	13	4±4 dBm
19	5±3 dBm	19	5±3 dBm	14	2±5 dBm	14	2±5 dBm
				15	0±5 dBm	15	0±5 dBm

2. Specification

2-3. LTE General Specification

	LTE Band1	LTE Band2	LTE Band3	LTE Band4	LTE Band5
Freq. Band[MHz] Uplink/ Downlink	1920~1980 2110~2170	1850~1910 1930~1990	1710~1785 1805~1880	1710~1755 2110~2155	824~849 869~894
ARFCN range	UL: 18000~18599 DL: 0~599	UL: 18600~19199 DL: 600~1199	UL: 19200~19949 DL: 1200~1949	UL: 19950~20399 DL: 1950~2399	UL: 20400~20649 DL: 2400~2649
Tx/Rx spacing	190MHz	80MHz	95MHz	400MHz	45MHz
Channel Bandwidth	5/10/15/20 MHz	1.4/3/5/10/15/20 MHz	1.4/3/5/10/15/20 MHz	1.4/3/5/10/15/20 MHz	1.4/3/5/10 MHz
Modulation	QPSK,16/64QAM	QPSK,16/64QAM	QPSK,16/64QAM	QPSK,16/64QAM	QPSK,16/64QAM
MS Power (MPR)	-35~25.7 dBm	-35~25.7 dBm	-35~25.7 dBm	-35~25.7 dBm	-35~25.7 dBm
Sensitivit (QPSK) (BW 10MHz)	-96.3 dBm	-94.3 dBm	-93.3 dBm	-96.3 dBm	-94.3 dBm
Cell Radius	>5Km	>5Km	>5Km	>5Km	>5Km

2. Specification

	LTE Band7	LTE Band12	LTE Band17	LTE Band20
Freq. Band[MHz] Uplink/ Downlink	2500~2570 2620~2690	699~716 729~746	704~716 734~746	832~862 791~821
ARFCN range	UL: 20750~21449 DL: 2750~3449	UL: 23010~23179 DL: 5010~5179	UL: 23730~23849 DL: 5730~5849	UL: 24150~24449 DL: 6150~6449
Tx/Rx spacing	120MHz	30MHz	30MHz	-41MHz
Channel Bandwidth	5/10/15/20 MHz	1.4/3/5/10 MHz	5/10 MHz	5/10/15/20 MHz
Modulation	QPSK,16/64QAM	QPSK,16/64QAM	QPSK,16/64QAM	QPSK,16/64QAM
MS Power (MPR)	-35~25.7 dBm	-35~25.7 dBm	-35~25.7 dBm	-35~25.7 dBm
Sensitivit (QPSK) (BW 10MHz)	-94.3 dBm	-93.3 dBm	-93.3 dBm	-93.3dBm
Cell Radius	>5Km	>5Km	>5Km	>5Km

3. Operation Instruction and Installation

Main Function

Item	Description
OS	Android OS: V6.0.1 (Marshmallow)
RF	LTE Cat.11 (600/50Mbps)
Battery	3600mAh
Base Band	2.4GHz Quad + 1.6GHz Quad
Other RF	A-GPS, BEIDOU, Glonass, BT 4.1, USB 2.0, NFC, WIFI 802.11 a/b/g/n/ac MIMO, MST
Camera	12MP A/F, OIS(Main) with LED Flash, 5MP(Front)
LCD	5.5" UB WQHD, 1440×2560
RAM	4GB
Sensor	Accelerometer, Gyro, Proximity, Compass, Hall, RGB, Fingerprint, Heart Rate.Light
Accessory	Charger: 5V/2A (AFC: 9V/1.67A) Data cable: 2.7pi, 1.2m Ear phone: 3.5pi, 4pin

9. Reference Abbreviate

Reference Abbreviate

- **AAC**: Advanced Audio Coding.
- **AVC** : Advanced Video Coding.
- **BER** : Bit Error Rate
- **BPSK**: Binary Phase Shift Keying
- **CA** : Conditional Access
- **CDM** : Code Division Multiplexing
- **C/I** : Carrier to Interference
- **DMB** : Digital Multimedia Broadcasting
- **EN** : European Standard
- **ES** : Elementary Stream
- **ETSI**: European Telecommunications Standards Institute
- **MPEG**: Moving Picture Experts Group
- **PN** : Pseudo-random Noise
- **PS** : Pilot Symbol
- **QPSK**: Quadrature Phase Shift Keying
- **RS** : Reed-Solomon
- **SI** : Service Information
- **TDM** : Time Division Multiplexing
- **TS** : Transport Stream

1. Safety Precautions

1-1. Repair Precaution

Before attempting any repair or detailed tuning, shield the device from RF noise or static electricity discharges.

Use only demagnetized tools that are specifically designed for small electronic repairs, as most electronic parts are sensitive to electromagnetic forces.

Use only high quality screwdrivers when servicing products. Low quality screwdrivers can easily damage the heads of screws.

Use only conductor wire of the properly gauge and insulation for low resistance, because of the low margin of error of most testing equipment.

We recommend 22-gauge twisted copper wire.

Hand-soldering is not recommended, because printed circuit boards (PCBs) can be easily damaged, even with relatively low heat. Never use a soldering iron with a power rating of more than 100 watts and use only lead-free solder with a melting point below 250°C (482°F).

Prior to disassembling the battery charger for repair, ensure that the AC power is disconnected.

Always use the replacement parts that are registered in the SEC system. Third-party replacement parts may not function properly.

1.Safety Precautions

1-2. ESD(Electrostatically Sensitive Devices) Precaution

Many semiconductors and ESDs in electronic devices are particularly sensitive to static discharge and can be easily damaged by it. We recommend protecting these components with conductive anti-static bags when you store or transport them.

Always use an anti-static strap or wristband and remove electrostatic buildup or dissipate static electricity from your body before repairing ESDs.

Ensure that soldering irons have AC adapter with ground wires and that the ground wires are properly connected.

Use only desoldering tools with plastic tips to prevent static discharge.

Properly shield the work environment from accidental electrostatic discharge before opening packages containing ESDs.

The potential for static electricity discharge may be increased in low humidity environments, such as air-conditioned rooms. Increase the airflow to the working area to decrease the chance of accidental static electricity discharges.

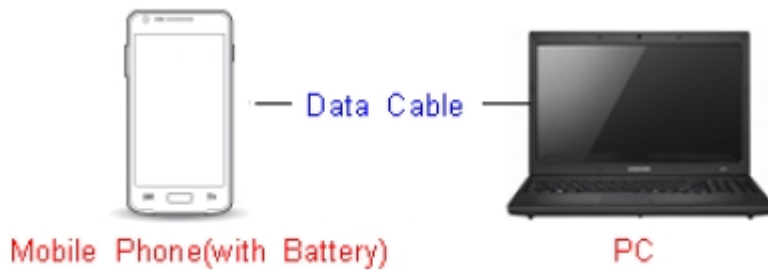
6. Level 1 Repair

6-1. S/W installation

6-1-1. Required items in order to install S/W

- Installation program: Downloader Program ([Odin3 v3.11.1.exe](#))
- Mobile Phone
- Data Cable
- Mobile device specific S/W: Binary files

※ Settings

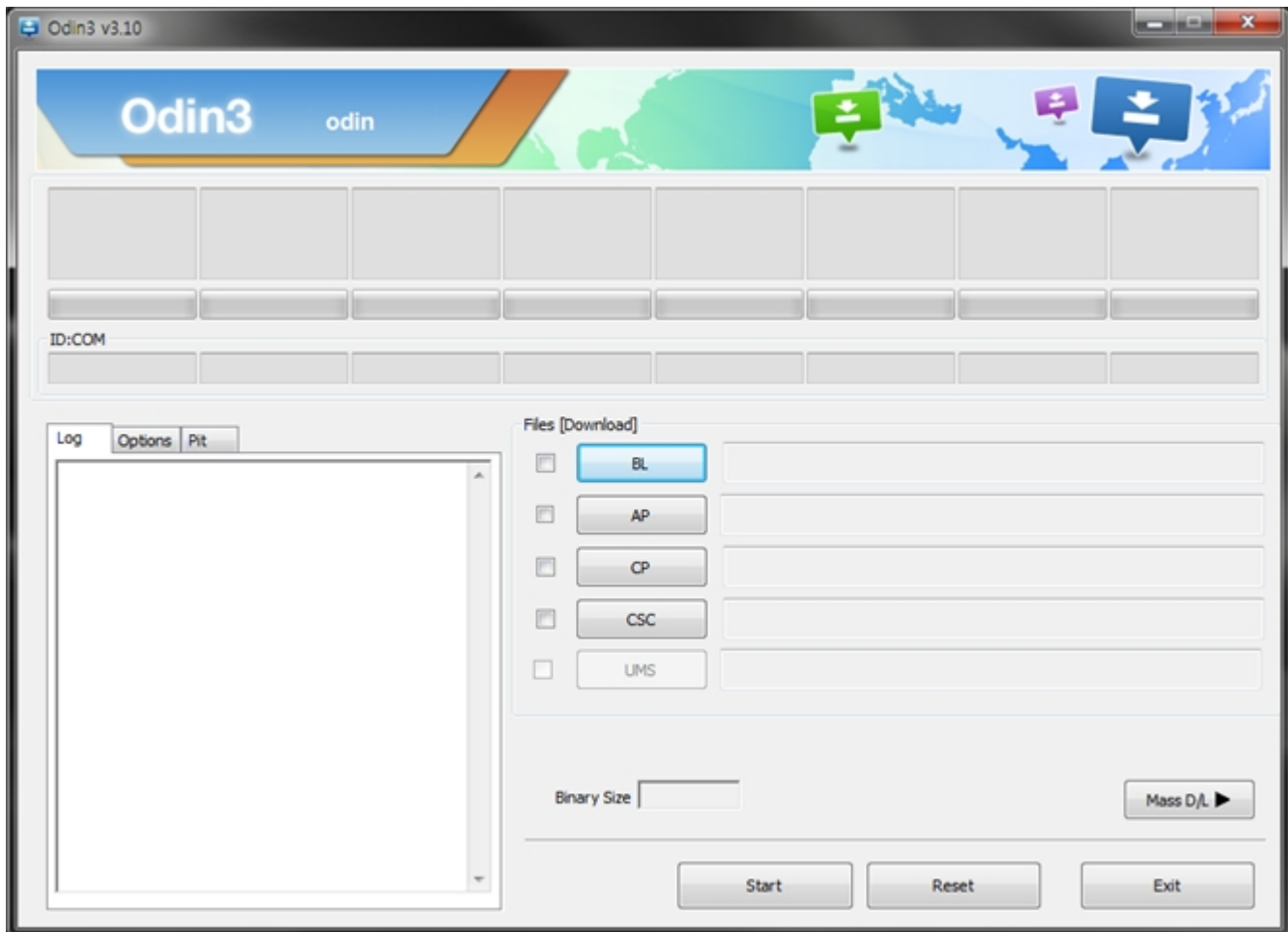


Data Cable : GH39-01801B

6. Level 1 Repair

6-1-2. S/W Installation Program (Downloader program)

- Open up the S/W Installation Program by executing the **"Odin3 v3.11.1.exe"**

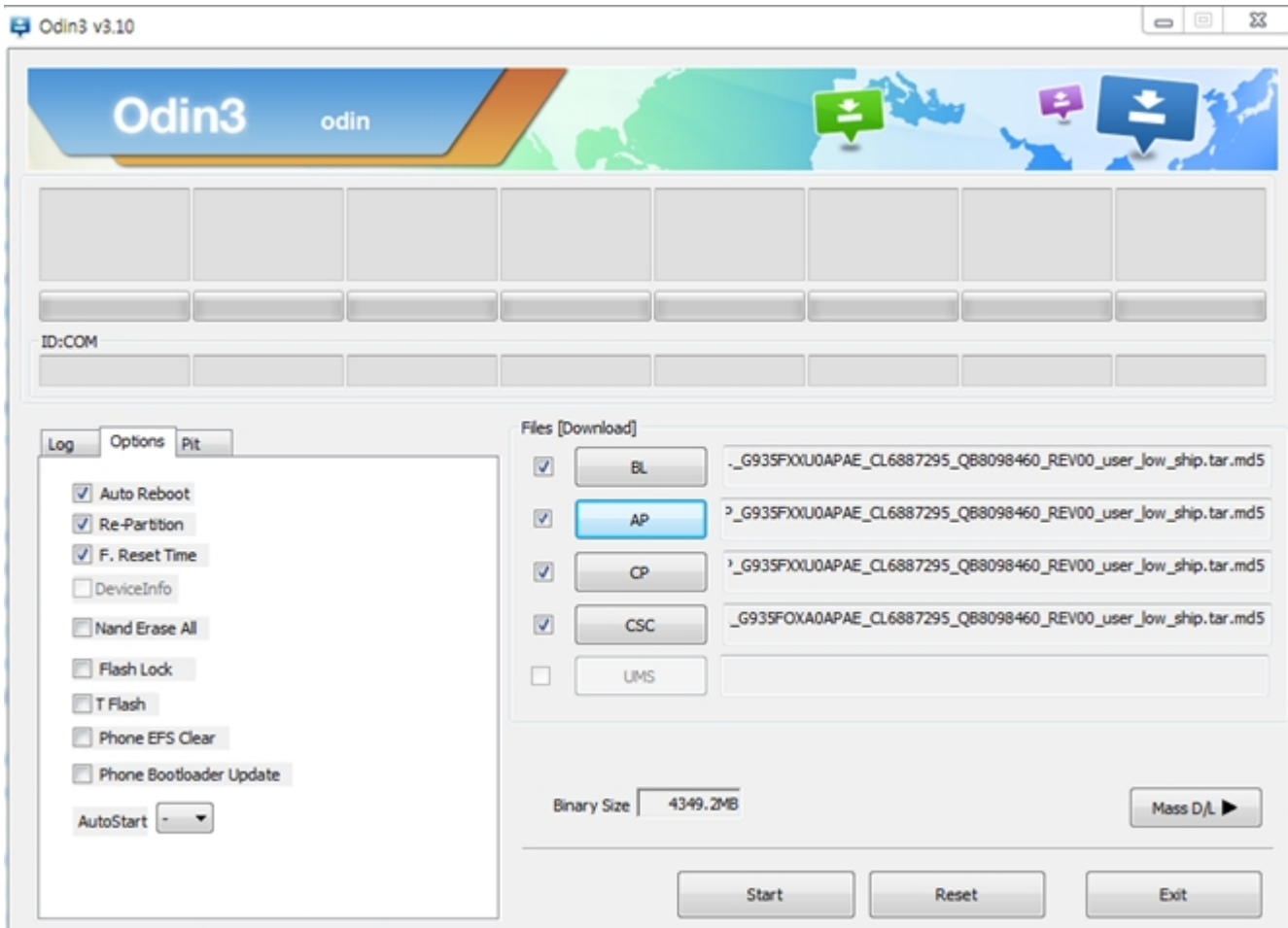


6. Level 1 Repair

1. Enable the check mark by click on the following options,

- Check Auto Reboot, Re-Partition, and F. Reset Time
- Check PIT
- Check BOOTLOADER, PDA, PHONE, and CSC Files

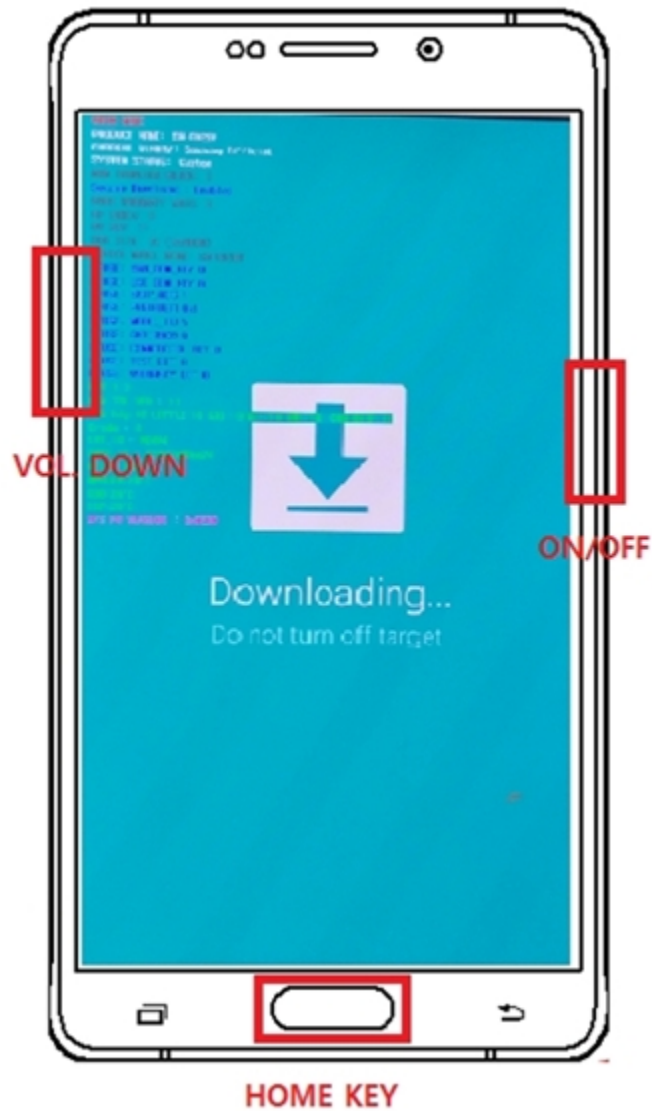
* Note : "Odin v3.10 or above" checks MD5 checksum just after file selection.



6. Level 1 Repair

2. Enter into Download Mode

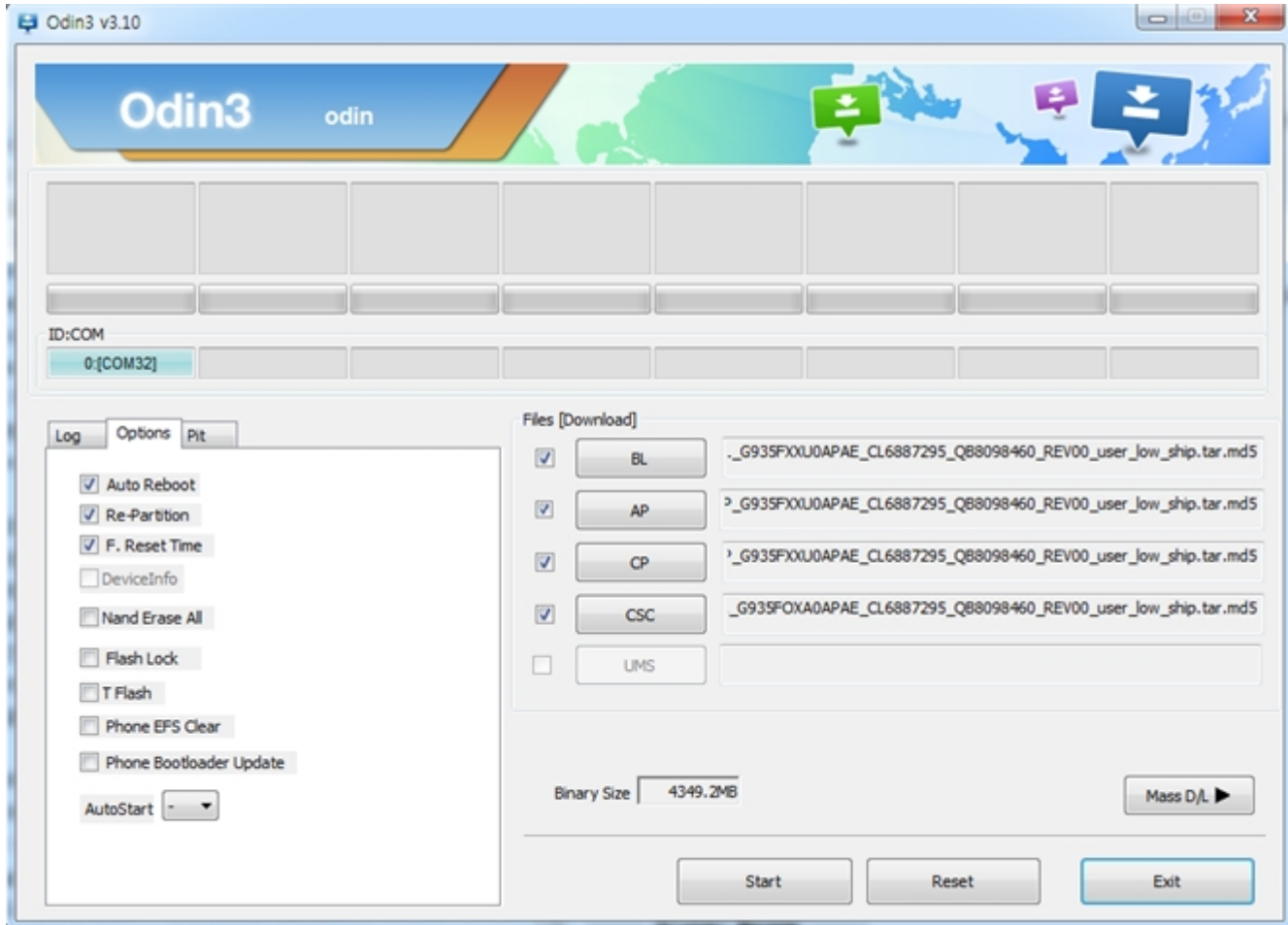
- Enter into Download Mode by pressing Volume Down button, Home button and ON/OFF Button simultaneously followed by pressing Volume up button as a direction of the phone.



6. Level 1 Repair

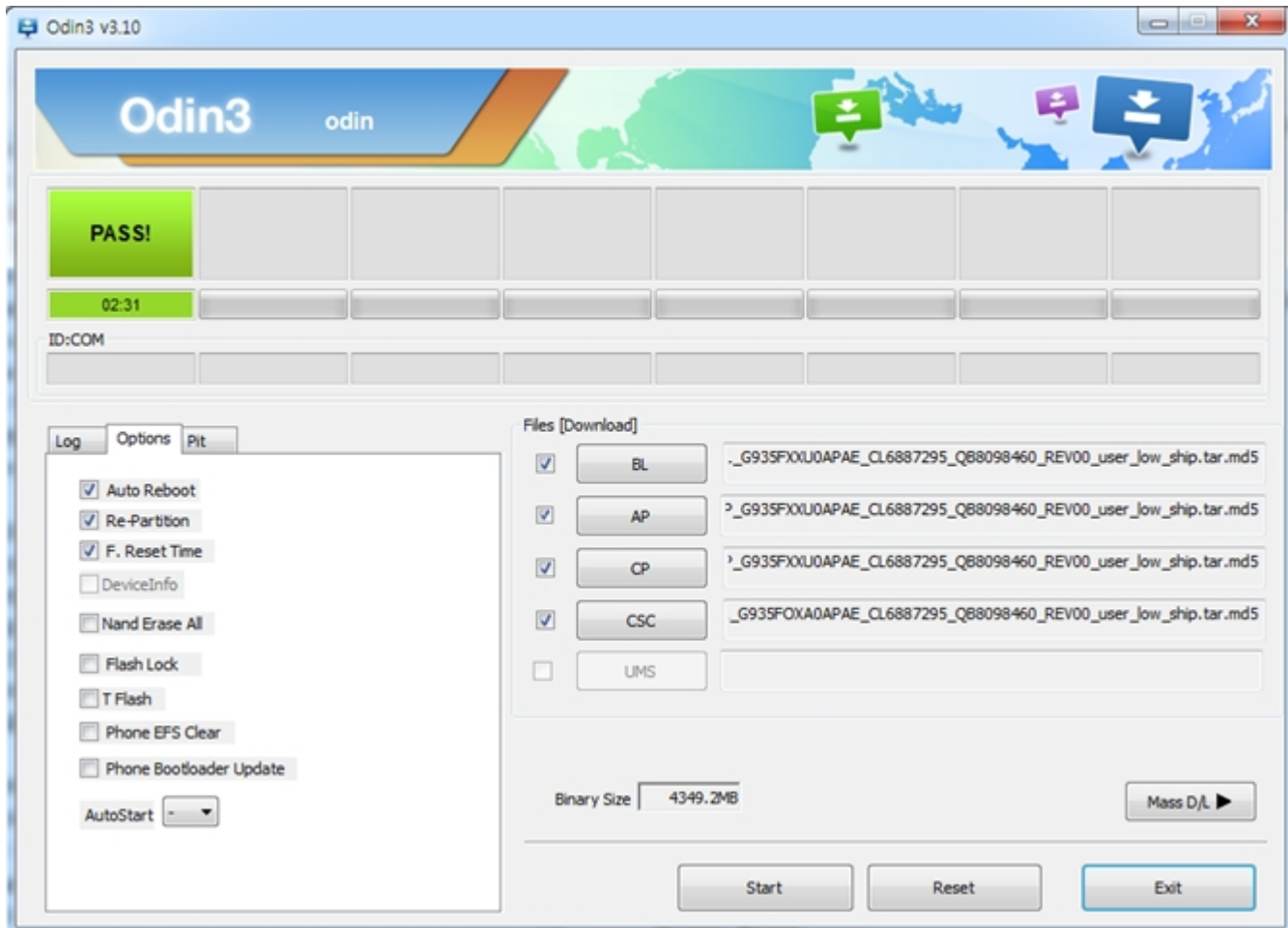
3. Connect the device to PC via Data Cable.

Make sure that the one of communication ports [ID:COM] box is highlighted in sky blue. The device is now connected with the PC and ready to download the binary files in it.



6. Level 1 Repair

4. Start downloading the binary files into the device by clicking Start button on the screen. The green colored "PASS!" sign will appear on the upper-left box if the binary files have been successfully downloaded into the device.



5. Disconnect the device from the Data cable.
6. Once the device boots up, you can check the version of the binary file or name by pressing the following code in sequence;
***#1234#**

You can perform Factory Reset by Settings → Accounts → Backup and reset

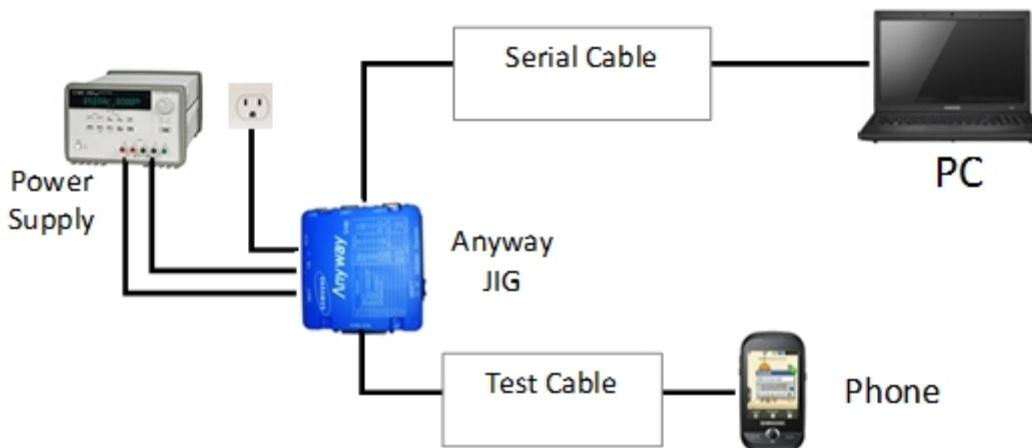
6. Level 1 Repair

6-2 IMEI writing

6-2-1 Preparation

- New IMEI writing Program has been released.
- Supported Model : Models which CAB files are uploaded on HHPsvc INI File category, instead of ini file.
- Refer to below IMEI writing procedure.(For SM-G935F Model)

- H/W



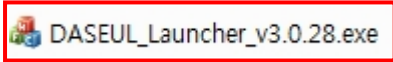
- S/W

① Library Install	To use Daseul, library files should be installed. Refer to SVC Bulletin “(11-82) Daseul (New IMEI writing Program) Library Install guide_rev1.0”
② Launcher	DASEUL_SVC_Launcher_v3_0_27 or higher -Uploaded on HHPsvc Notice
③ Runtime File	1. DASEUL_Runtime_Ver_3.1.164.0.CAB or higher - Uploaded on HHPsvc Notice 2. Make 'modelName' folder at the same position with launcher & Runtime file. <div style="border: 2px solid red; padding: 5px; margin-top: 10px;"> </div>
④ Model File	Copy Model File under the 'Model Name' folder

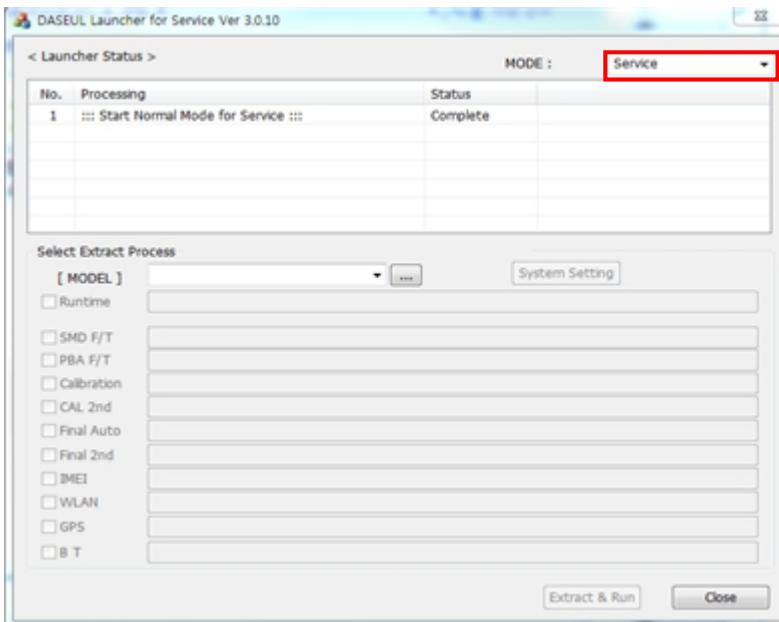
6. Level 1 Repair


6-2-2 IMEI writing Process

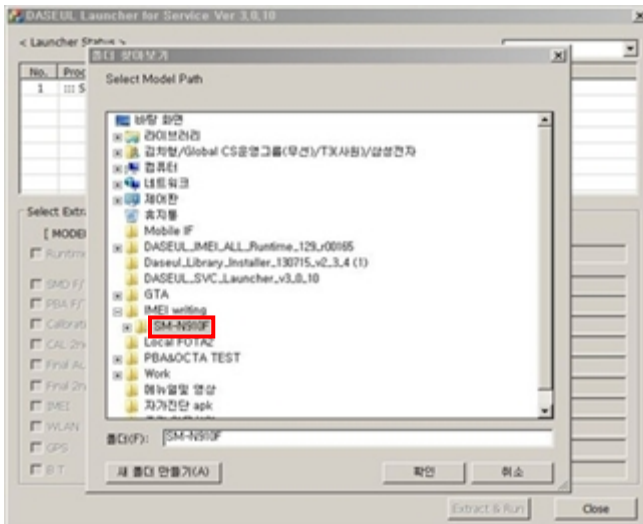
1. Run DASEUL_SVC_Launcher_v3.0.28.exe



2. Select Service Mode

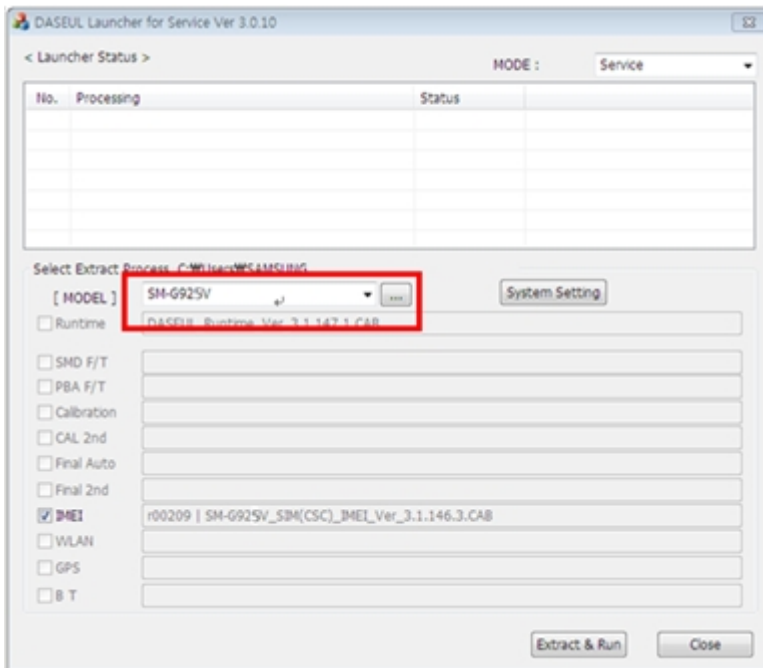


3. Click  and Select folder where the Launcher exists



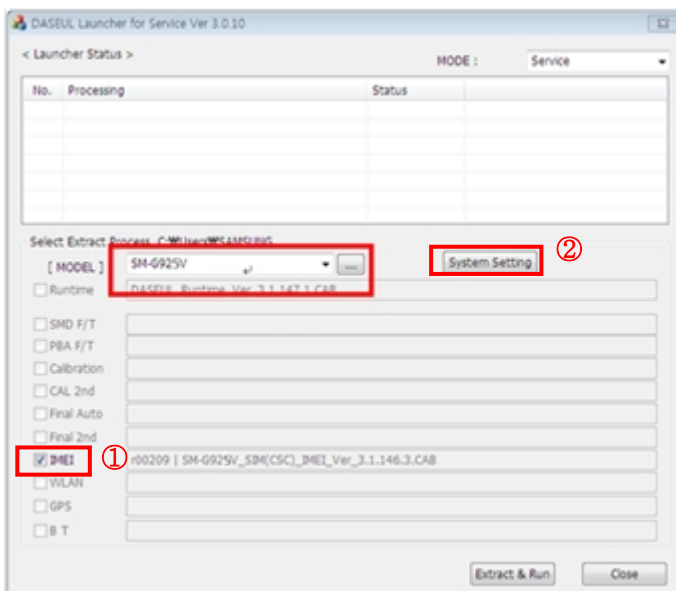
6. Level 1 Repair

4. Select Model



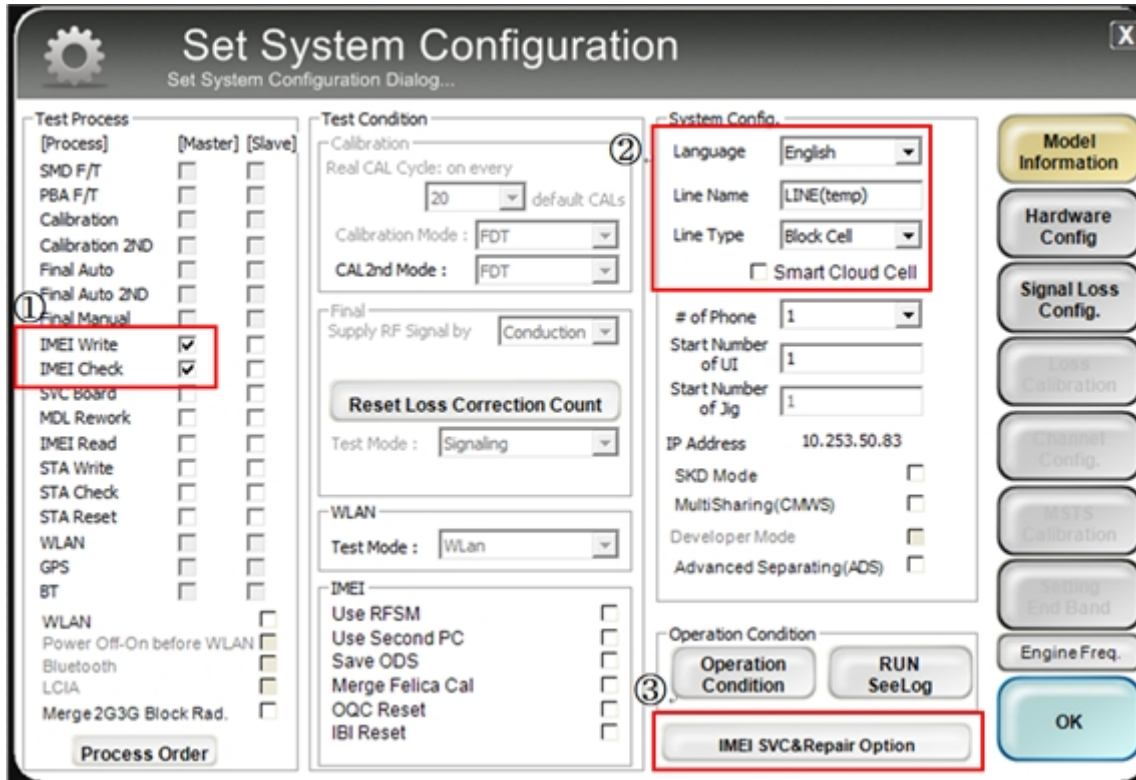
5. Check IMEI and click 'System Setting'

✂Once you setup the setting, you don't have to do it again, unless there is change. From second run of the IMEI program, check IMEI and click 'Extract & Run'.

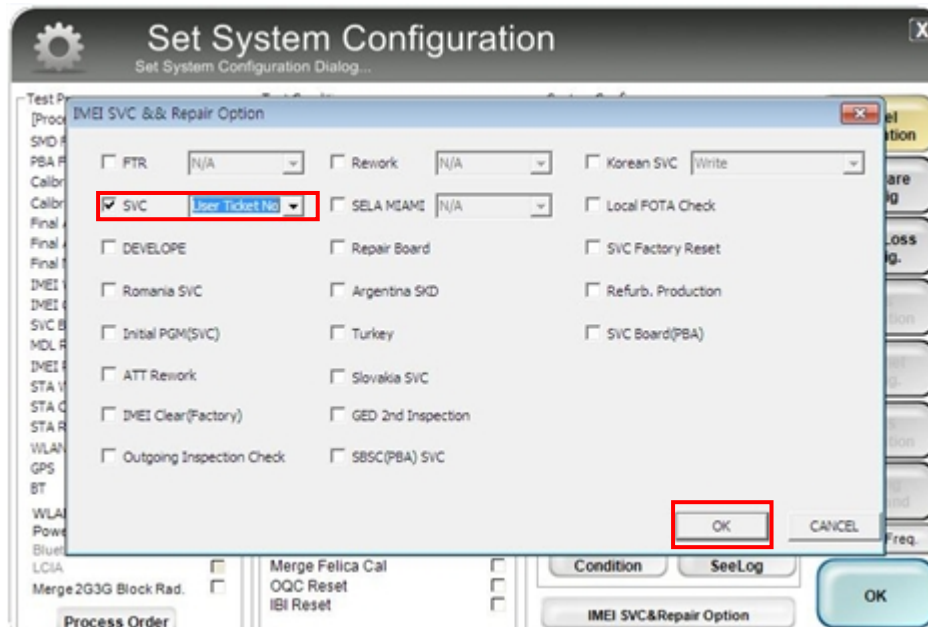


6. Level 1 Repair

6. Check 'IMEI Write / IMEI Check', and disable 'smart cloud cell' and click 'IMEI SVC & Repair Option'

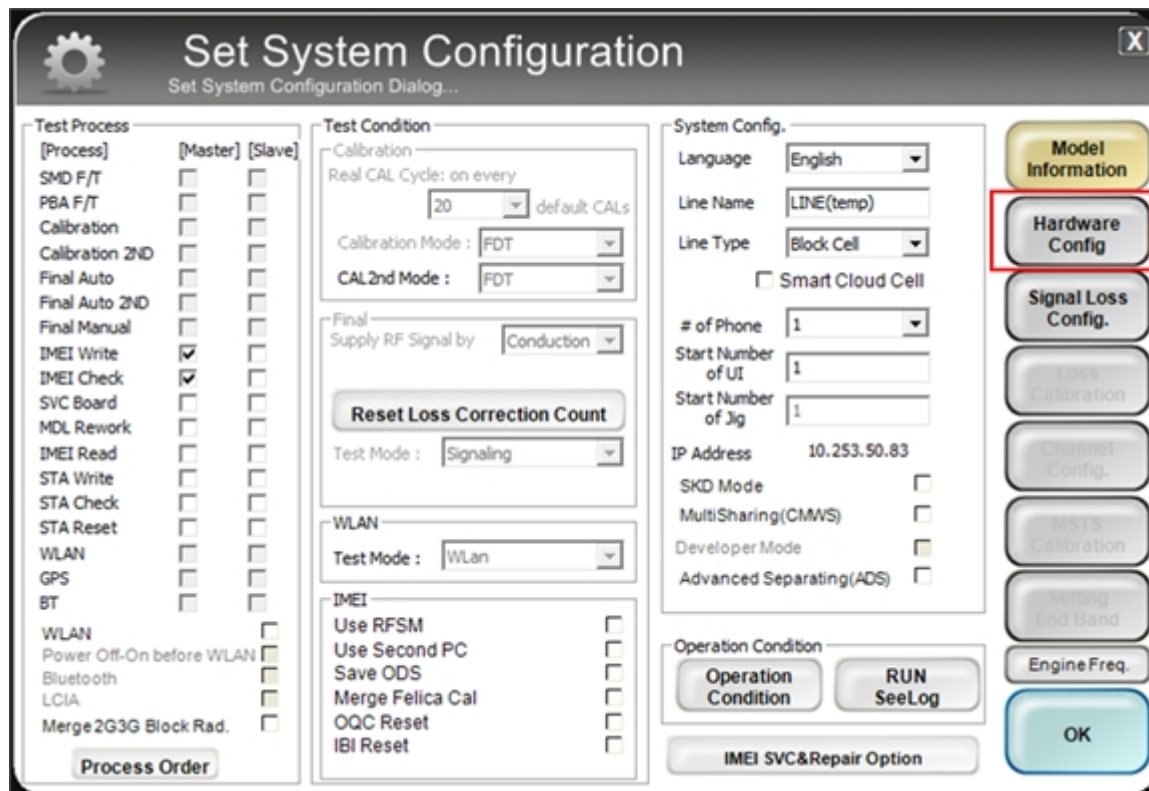


7. Check 'SVC , User Ticket No' and click OK



6. Level 1 Repair

8. Click 'Hardware Config'



Set System Configuration
Set System Configuration Dialog...

Test Process

[Process]	[Master]	[Slave]
SMD F/T	<input type="checkbox"/>	<input type="checkbox"/>
PBA F/T	<input type="checkbox"/>	<input type="checkbox"/>
Calibration	<input type="checkbox"/>	<input type="checkbox"/>
Calibration 2ND	<input type="checkbox"/>	<input type="checkbox"/>
Final Auto	<input type="checkbox"/>	<input type="checkbox"/>
Final Auto 2ND	<input type="checkbox"/>	<input type="checkbox"/>
Final Manual	<input type="checkbox"/>	<input type="checkbox"/>
IMEI Write	<input checked="" type="checkbox"/>	<input type="checkbox"/>
IMEI Check	<input checked="" type="checkbox"/>	<input type="checkbox"/>
SVC Board	<input type="checkbox"/>	<input type="checkbox"/>
MDL Rework	<input type="checkbox"/>	<input type="checkbox"/>
IMEI Read	<input type="checkbox"/>	<input type="checkbox"/>
STA Write	<input type="checkbox"/>	<input type="checkbox"/>
STA Check	<input type="checkbox"/>	<input type="checkbox"/>
STA Reset	<input type="checkbox"/>	<input type="checkbox"/>
WLAN	<input type="checkbox"/>	<input type="checkbox"/>
GPS	<input type="checkbox"/>	<input type="checkbox"/>
BT	<input type="checkbox"/>	<input type="checkbox"/>
WLAN	<input type="checkbox"/>	<input type="checkbox"/>
Power Off-On before WLAN	<input type="checkbox"/>	<input type="checkbox"/>
Bluetooth	<input type="checkbox"/>	<input type="checkbox"/>
LCIA	<input type="checkbox"/>	<input type="checkbox"/>
Merge 2G3G Block Rad.	<input type="checkbox"/>	<input type="checkbox"/>

Test Condition

Calibration
Real CAL Cycle: on every default CALs
Calibration Mode :
CAL2nd Mode :

Final
Supply RF Signal by :

Reset Loss Correction Count

Test Mode :

WLAN
Test Mode :

IMEI
Use RFSM
Use Second PC
Save ODS
Merge Felica Cal
OQC Reset
IBI Reset

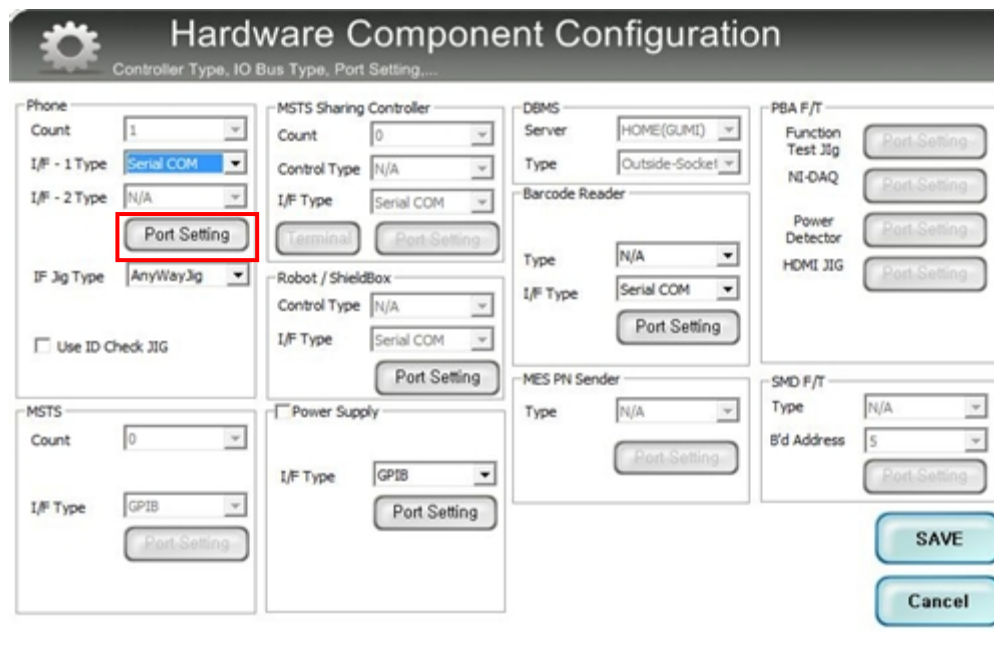
System Config.

Language :
Line Name :
Line Type :
 Smart Cloud Cell
of Phone :
Start Number of UI :
Start Number of Jig :
IP Address : 10.253.50.83
SKD Mode
MultiSharing(CMWS)
Developer Mode
Advanced Separating(ADS)

Operation Condition

Model Information

9. Click 'Port Setting'



Hardware Component Configuration
Controller Type, IO Bus Type, Port Setting....

Phone

Count :
I/F - 1 Type :
I/F - 2 Type :
IF Jig Type :
 Use ID Check JIG

MSTS Sharing Controller

Count :
Control Type :
I/F Type :

Robot / ShieldBox

Control Type :
I/F Type :

Power Supply

I/F Type :

DBMS

Server :
Type :

Barcode Reader

Type :
I/F Type :

MES PN Sender

Type :

PBA F/T

Function Test Jig
NI-DAQ
Power Detector
HDMI JIG

MSTS

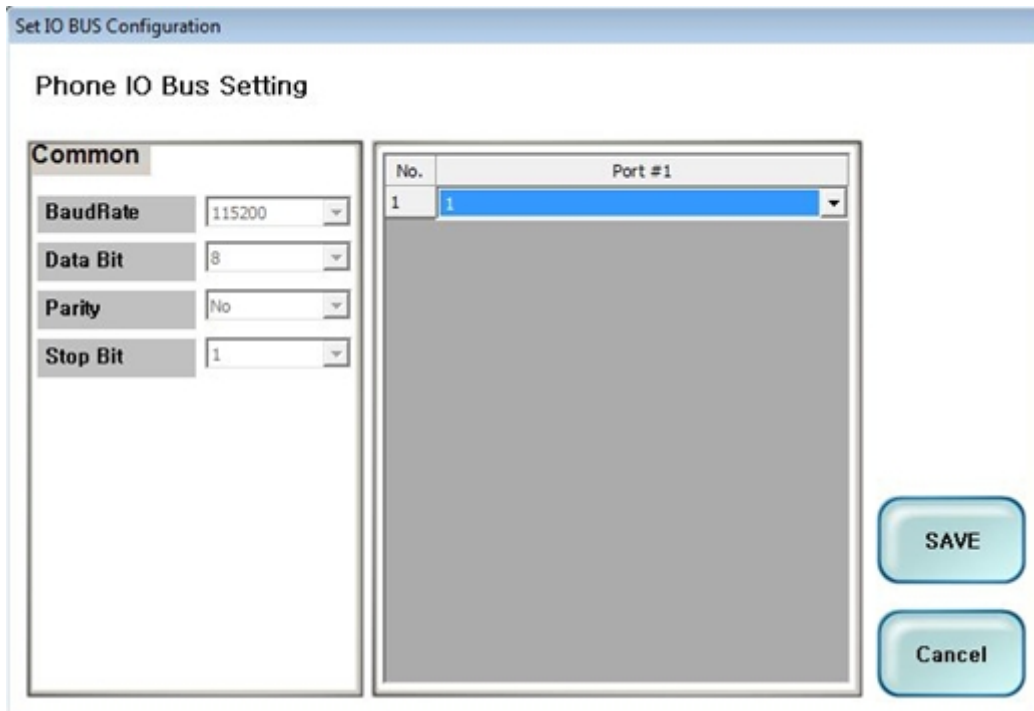
Count :
I/F Type :

SMD F/T

Type :
B'd Address :

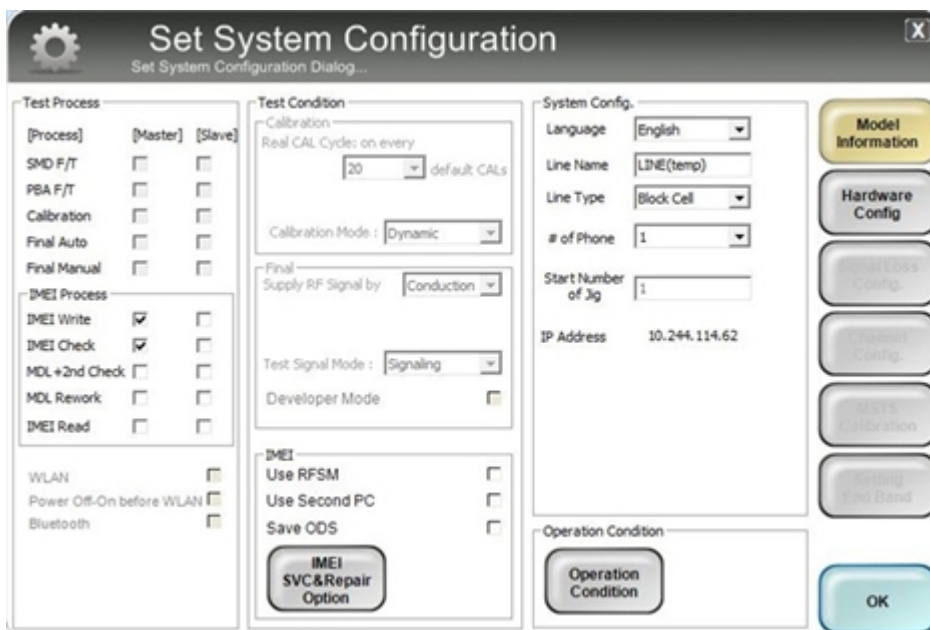
6. Level 1 Repair

10. Select Port Number and SAVE



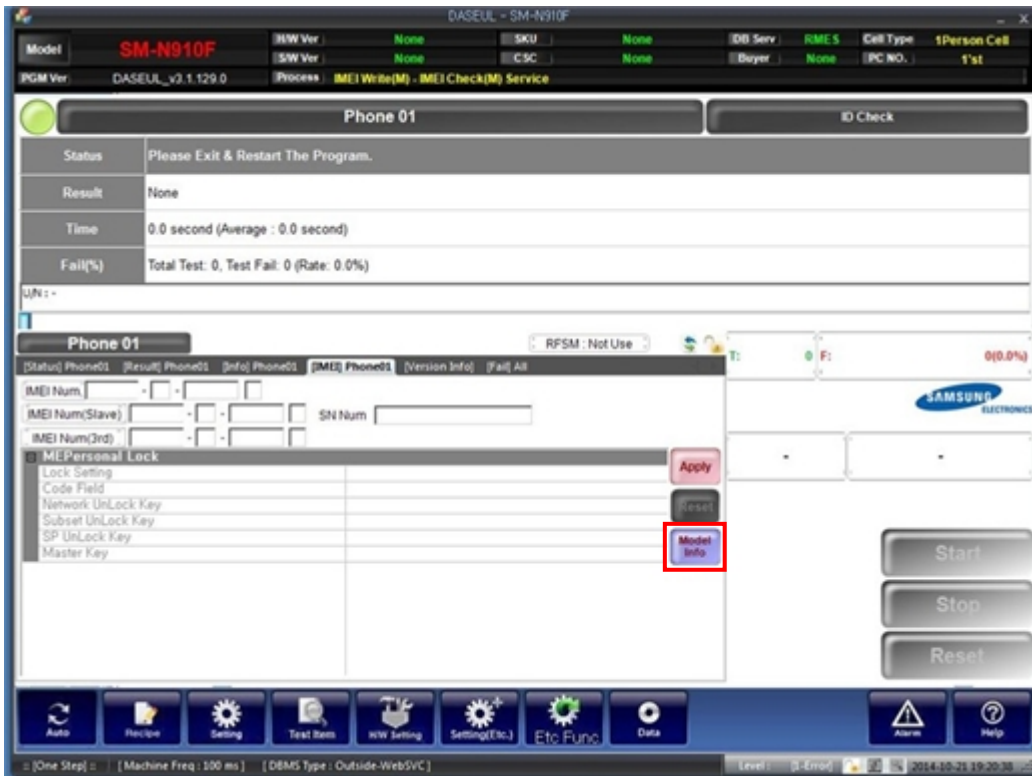
No.	Port #1
1	1

11. Click OK to proceed



6. Level 1 Repair

12. Click Model Info and OK when pop-up shows

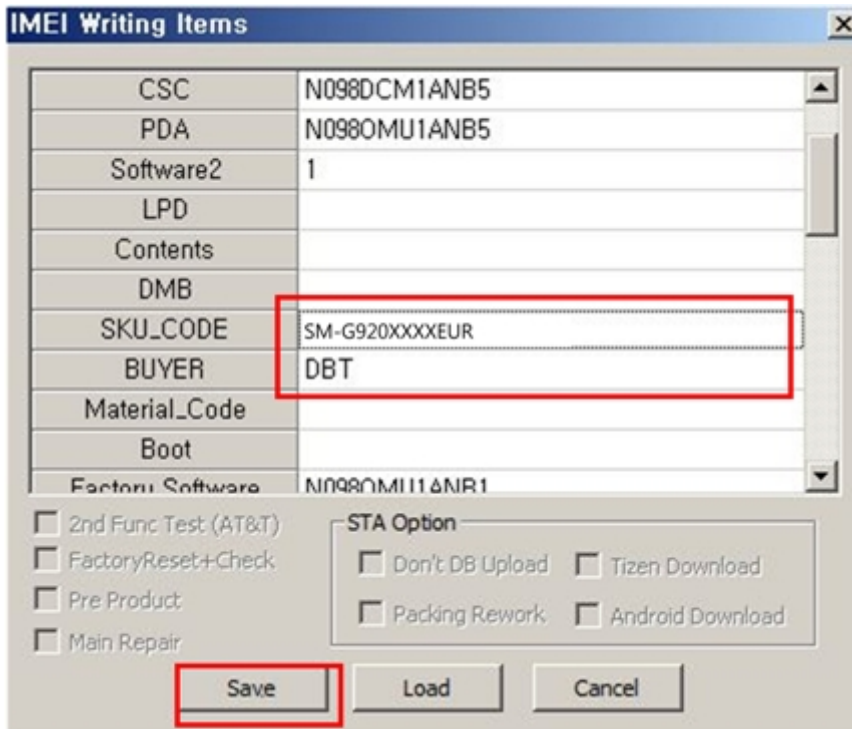


13. Click OK

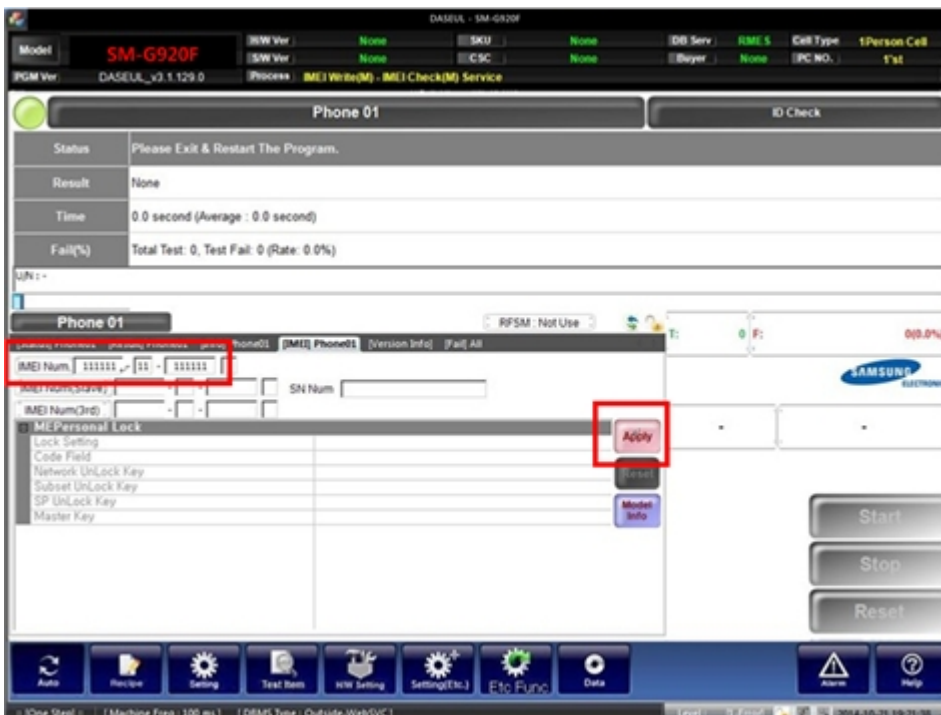


6. Level 1 Repair

14. Input SKU_CODE, then click OK button.
 ※ Refer to HHPsvc→IMEI Review to check SKU Code.

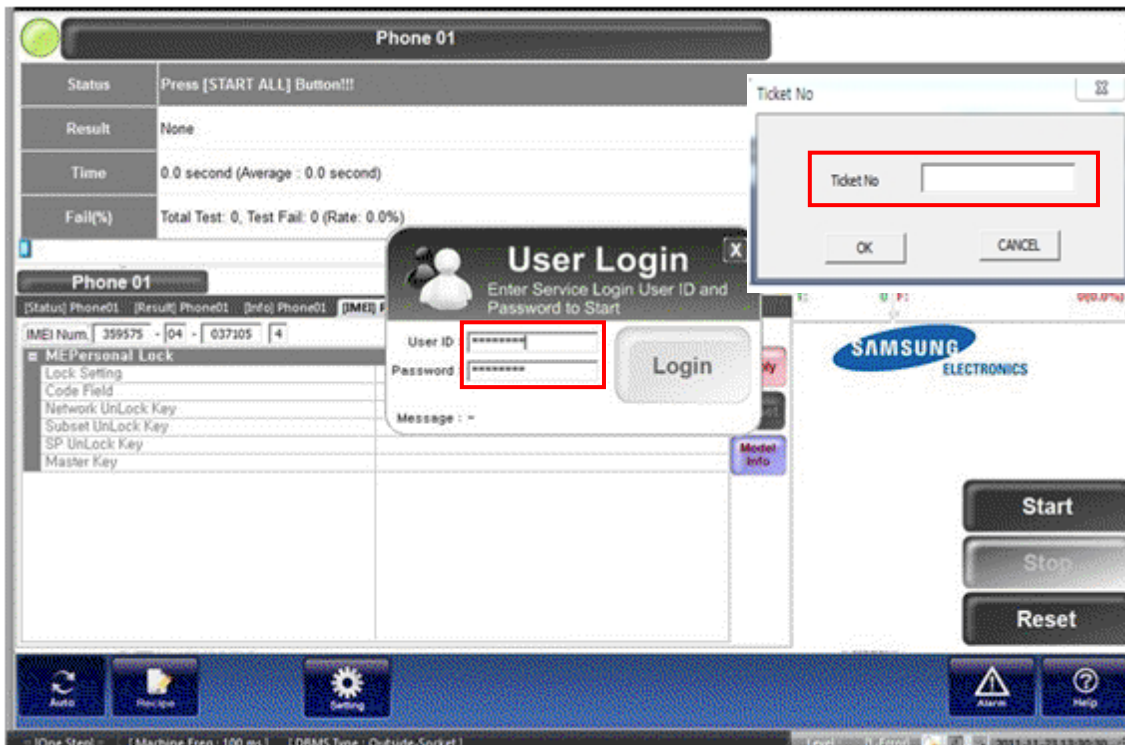


15. Input IMEI Number and click Apply



6. Level 1 Repair

16. ① Click Start, and input IMEI writing ID and Password → ② input Ticket No

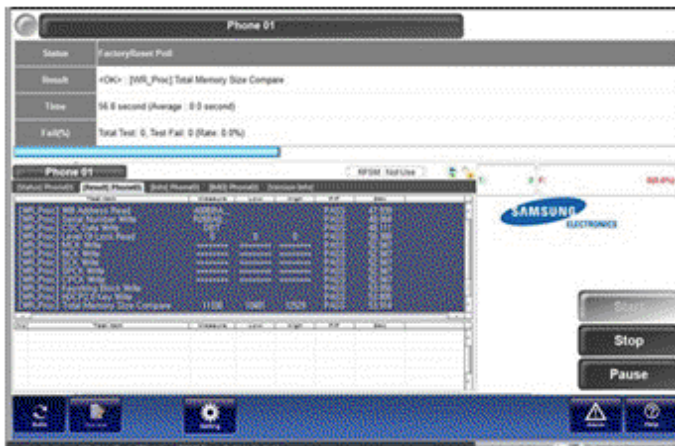


17. Connect the phone to Anyway JIG

※ When you connect the phone, the phone should be turned off.

After connecting the phone, the phone will be booted automatically.

18. IMEI Writing Proceeding



6. Level 1 Repair






6-4. RF Calibration

6-1-1. Required items in order to calibrate RF

- Installation program: RF Calibration Program
 - Daseul_Launcher_vx.x.xx.exe
 - Daseul_CAL_ALL_Runtime_x.x.xxx.x.CAB
 - Model File (SM-N935F_OPEN_CALIBRATION_VER_x.x.xxx.xx.CAB)

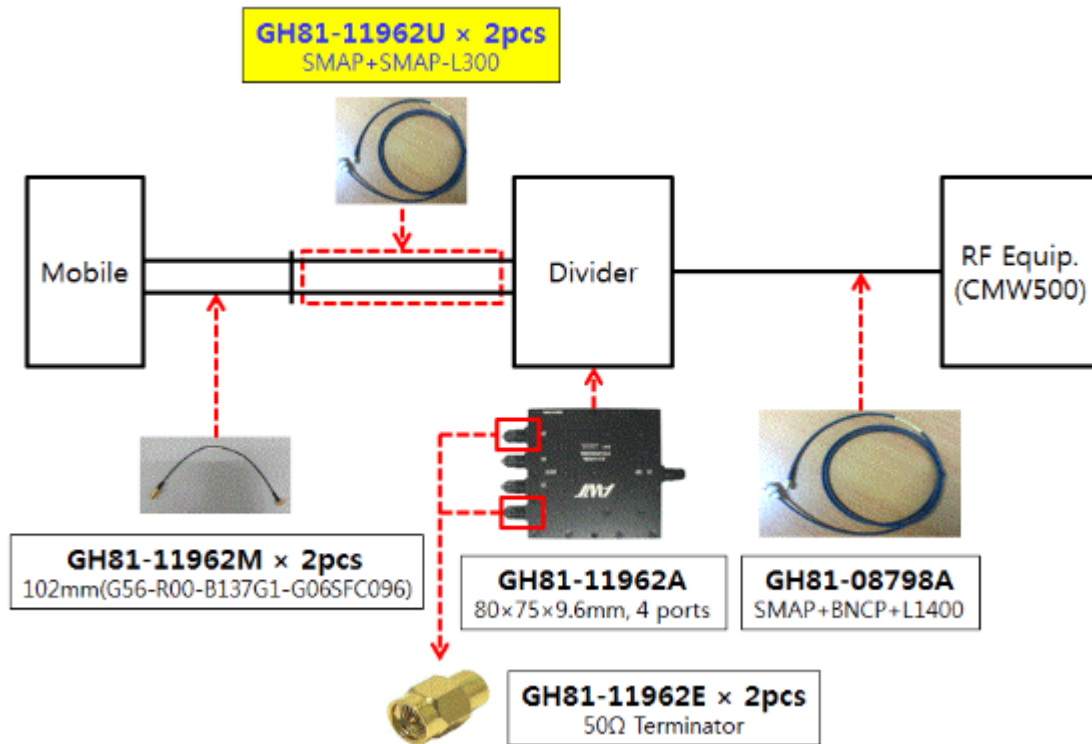
※ It is required to use the latest program.

- Mobile Phone
- E3632A Power Supply
- JIG BOX (GH81-11888A)
- UART Serial Cable
- Table of test cables
- R&S CMW500
- GPIB Cable (2ea)
- Adapter (GH81-11888K)

RF Cable (Manual)	GH81-11962M	GH81-11962U	
	1.2T, 102mm 	1.2T, 102mm 	
4 Port Divider	GH81-11962A	GH81-08798A	GH81-11962E
	Divider 	Divider Cable 	50Ω terminator 

6. Level 1 Repair


- SETTING





6. Level 1 Repair

6-1-2. RF Calibration Program

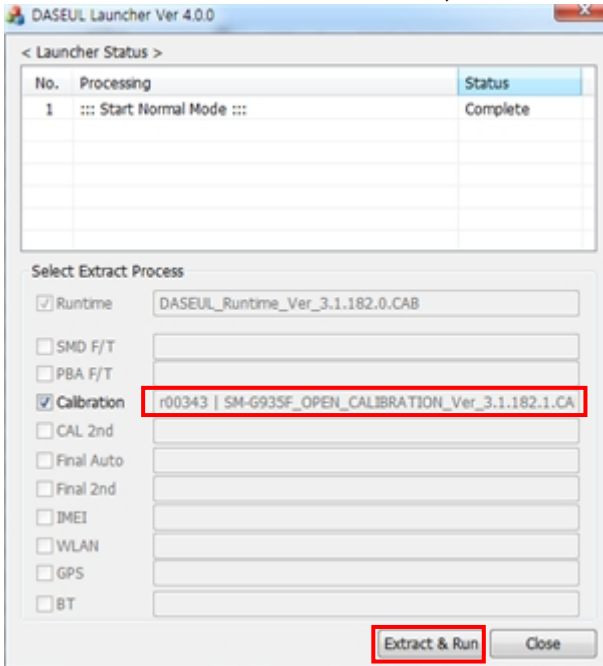
1. Run the RF Calibration Program Launcher, 'DASEUL_Launcher_vx.x.xx.exe'.

 DASEUL_CAL_ALL_Runtime_3.1.182.0_r00343.CAB

 DASEUL_Launcher_v4.0.0.exe

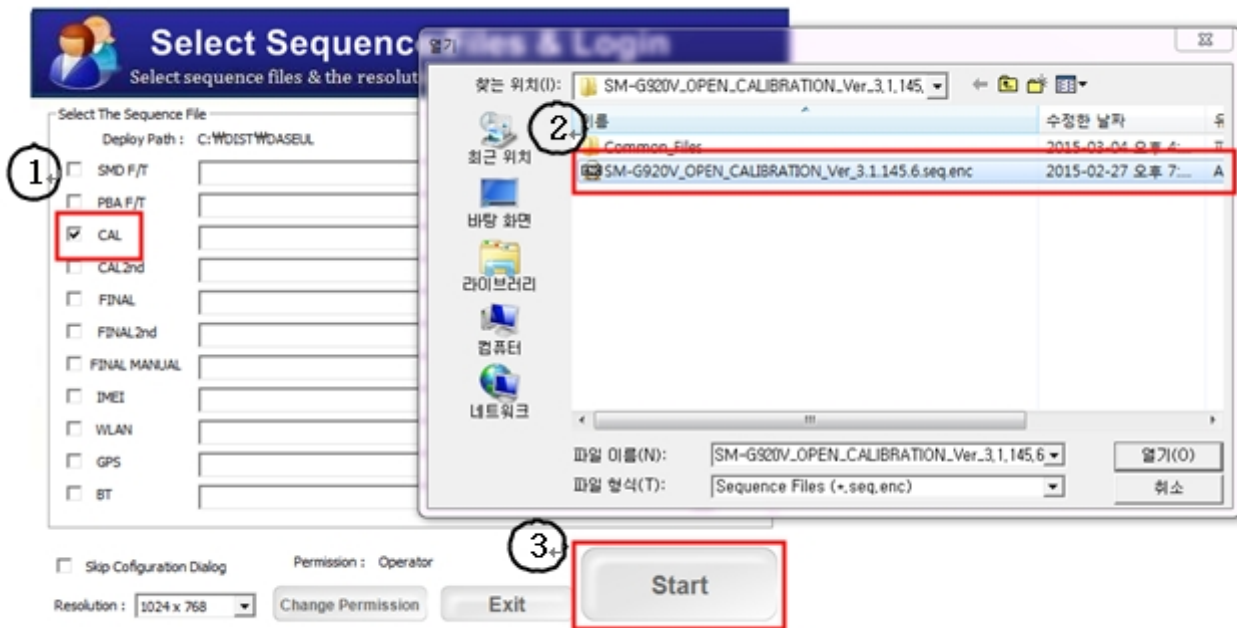
 SM-G935F_OPEN_CALIBRATION_Ver_3.1.182.1.CAB

2. Check the 'Calibration' menu, and select 'Extract & Run'.



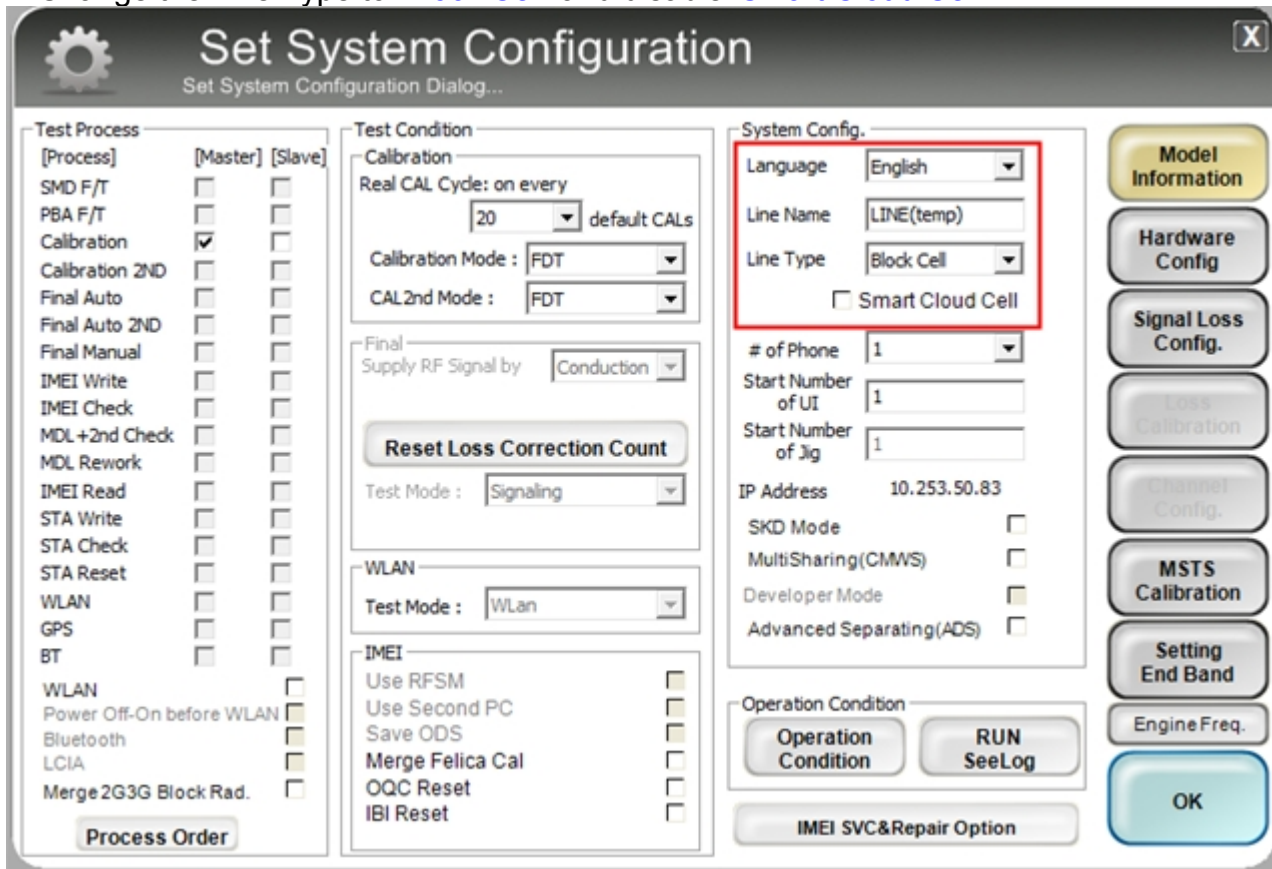
6. Level 1 Repair

3. Check the 'CAL' and open the [model file](#), then select 'Start' button.



6. Level 1 Repair

4. Change the Line Type to 'Block Cell' and disable 'Smart Cloud Cell'



Set System Configuration
Set System Configuration Dialog...

Test Process

[Process]	[Master]	[Slave]
SMD F/T	<input type="checkbox"/>	<input type="checkbox"/>
PBA F/T	<input type="checkbox"/>	<input type="checkbox"/>
Calibration	<input checked="" type="checkbox"/>	<input type="checkbox"/>
Calibration 2ND	<input type="checkbox"/>	<input type="checkbox"/>
Final Auto	<input type="checkbox"/>	<input type="checkbox"/>
Final Auto 2ND	<input type="checkbox"/>	<input type="checkbox"/>
Final Manual	<input type="checkbox"/>	<input type="checkbox"/>
IMEI Write	<input type="checkbox"/>	<input type="checkbox"/>
IMEI Check	<input type="checkbox"/>	<input type="checkbox"/>
MDL+2nd Check	<input type="checkbox"/>	<input type="checkbox"/>
MDL Rework	<input type="checkbox"/>	<input type="checkbox"/>
IMEI Read	<input type="checkbox"/>	<input type="checkbox"/>
STA Write	<input type="checkbox"/>	<input type="checkbox"/>
STA Check	<input type="checkbox"/>	<input type="checkbox"/>
STA Reset	<input type="checkbox"/>	<input type="checkbox"/>
WLAN	<input type="checkbox"/>	<input type="checkbox"/>
GPS	<input type="checkbox"/>	<input type="checkbox"/>
BT	<input type="checkbox"/>	<input type="checkbox"/>
WLAN	<input type="checkbox"/>	<input type="checkbox"/>
Power Off-On before WLAN	<input type="checkbox"/>	<input type="checkbox"/>
Bluetooth	<input type="checkbox"/>	<input type="checkbox"/>
LCIA	<input type="checkbox"/>	<input type="checkbox"/>
Merge 2G3G Block Rad.	<input type="checkbox"/>	<input type="checkbox"/>

Test Condition

Calibration
Real CAL Cycle: on every default CALs

Calibration Mode :

CAL2nd Mode :

Final
Supply RF Signal by

Reset Loss Correction Count

Test Mode :

WLAN
Test Mode :

IMEI
Use RFSM
Use Second PC
Save ODS
Merge Felica Cal
OQC Reset
IBI Reset

System Config.

Language

Line Name

Line Type

Smart Cloud Cell

of Phone

Start Number of UI

Start Number of Jig

IP Address

SKD Mode

MultiSharing(CMWS)

Developer Mode

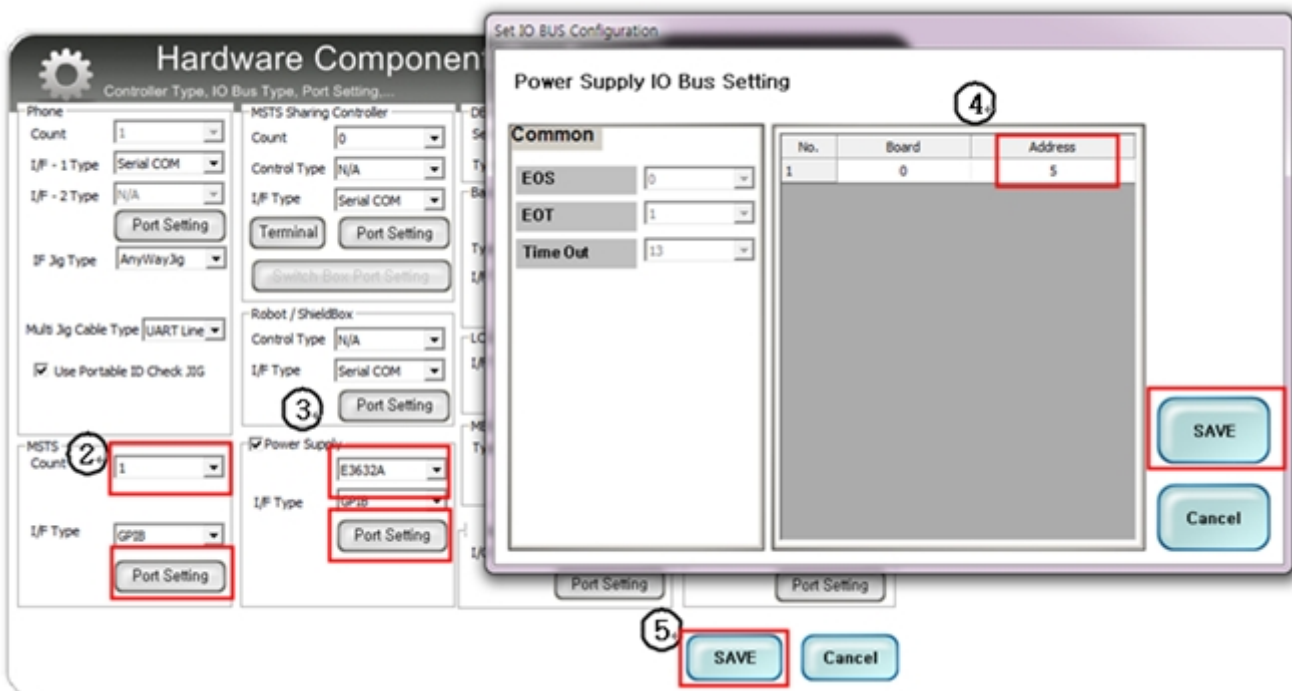
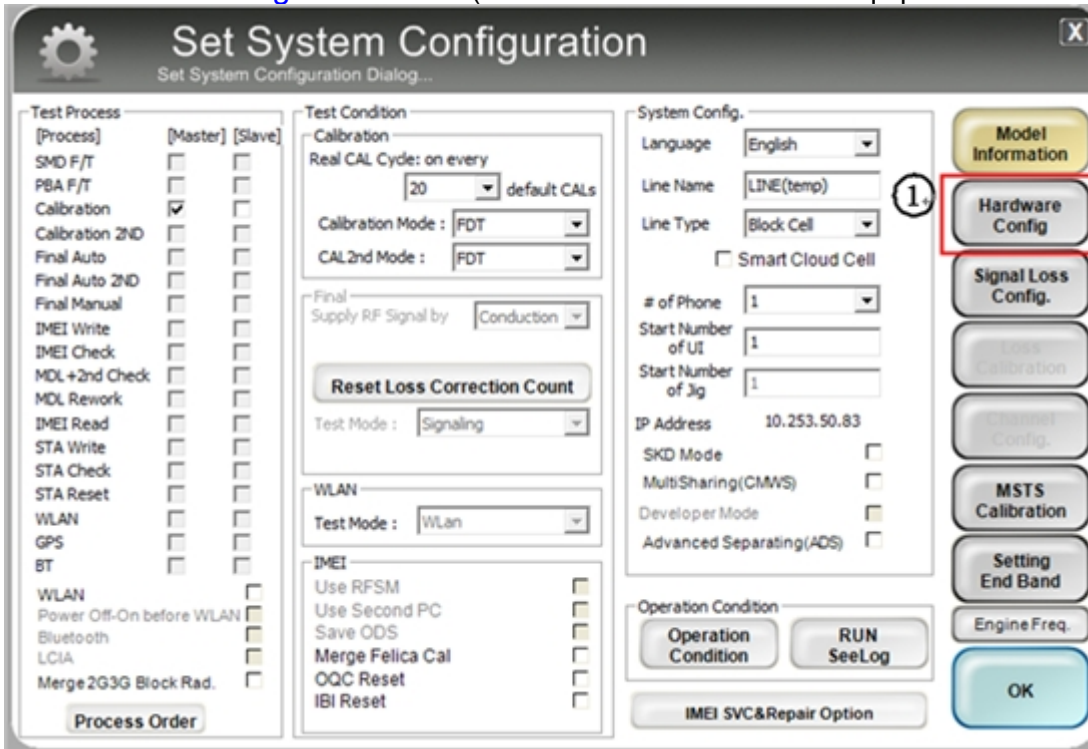
Advanced Separating(ADS)

Operation Condition

Model Information

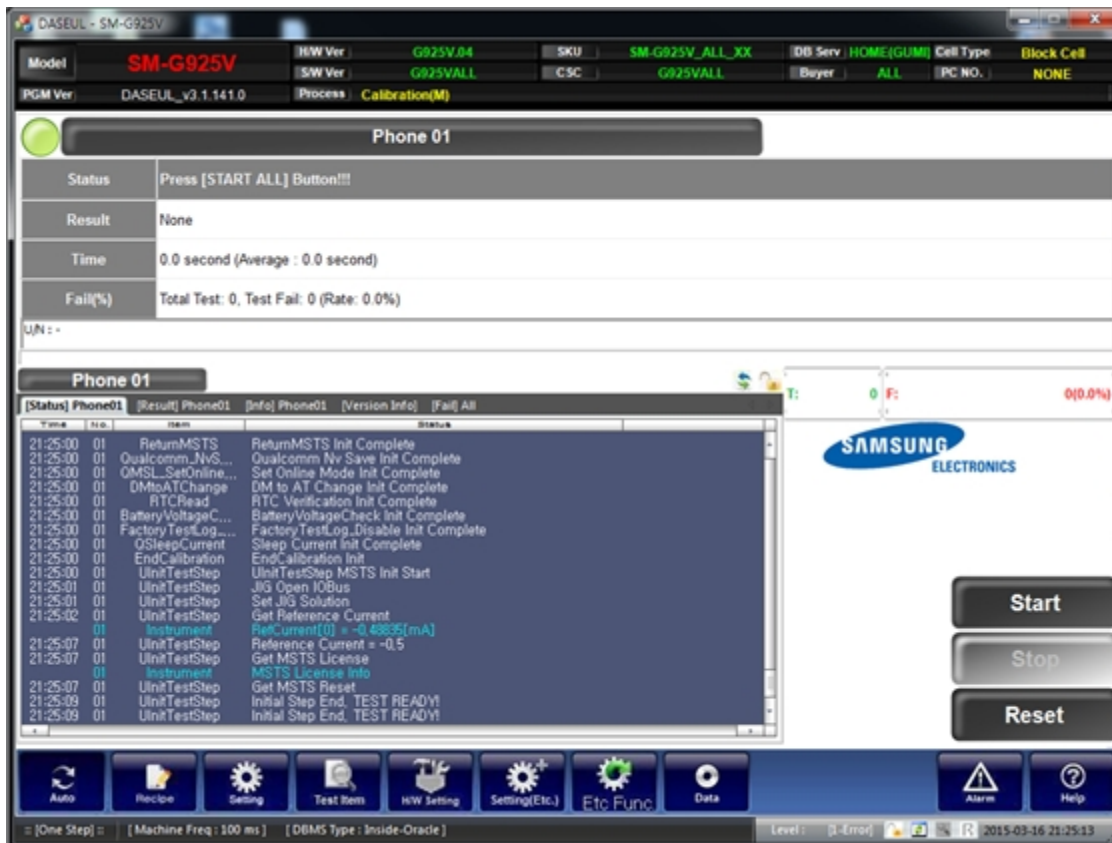
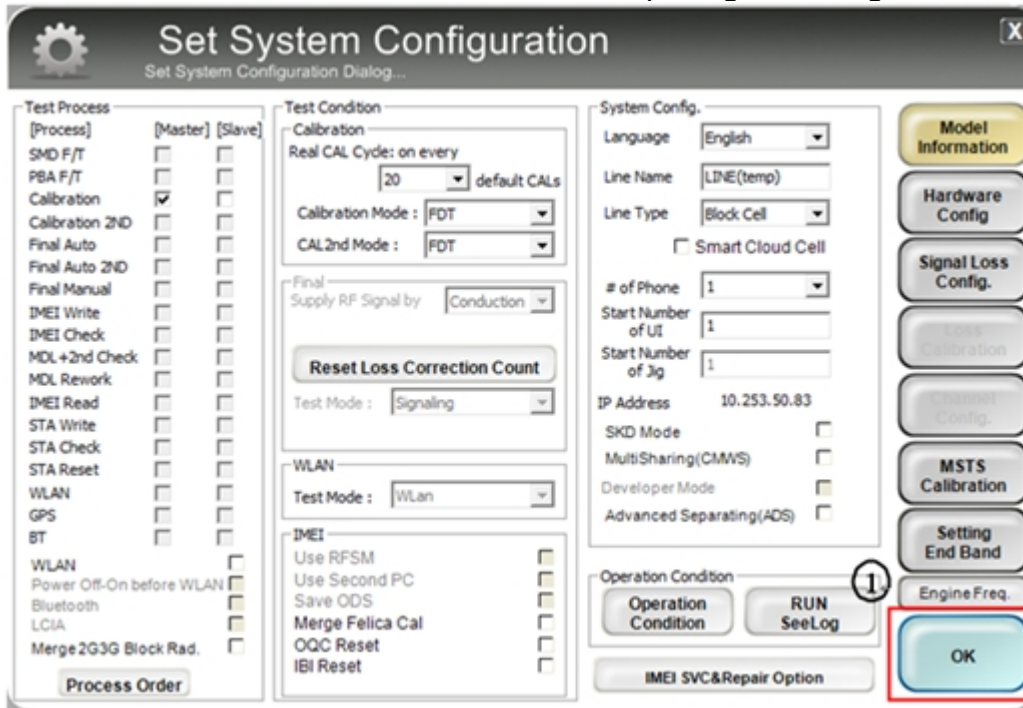
6. Level 1 Repair

5. Set the GPIB address of MSTs(CMW500) and Power Supply(E3632A) to enter 'Hardware Config' and 'Save'. (Check the GPIB address of equipments in advance)



6. Level 1 Repair

6. Press 'OK' to start RF Calibration after completing all settings.



6. Level 1 Repair

7-1. Speaker Calibration

7-1-1 Notice

- It is necessary to calibrate the speaker for all cases of replacing the speakers.

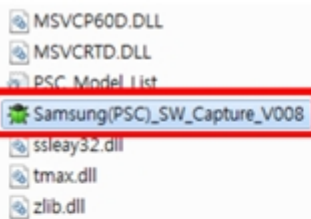
7-1-2 You need :

- Mobile device
- Laptop or Note PC
- Anyway Jig
- UART Serial Cable
- IF Test Cable (Different by models)

7-1-3 Lay-out



7-1-4 How to Calibrate Speaker

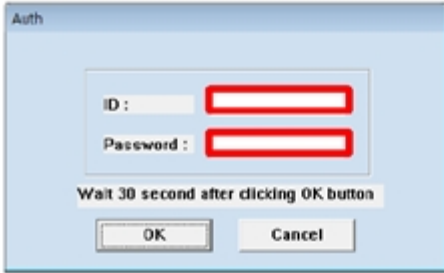


① Run 'Samsung(PSC)_SW_Capture_V008.exe'.

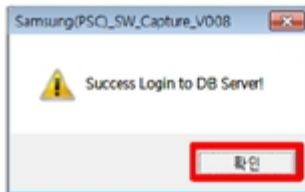


② Check 'SPK' item in the box.

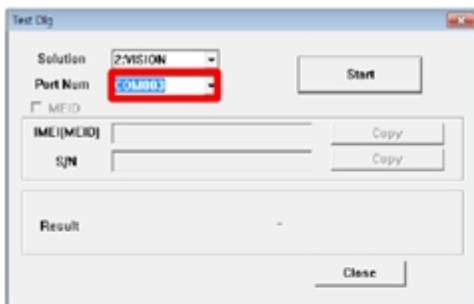
6. Level 1 Repair



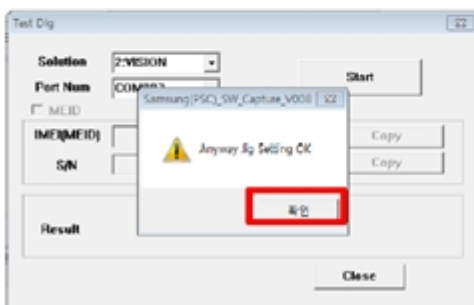
③ Input GSPN ID and Password, then press 'OK'.



④ Confirm Login to DB Server to press '확인'.



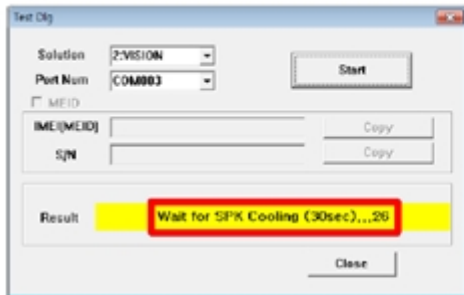
⑤ Set Port Number and press 'Start'.



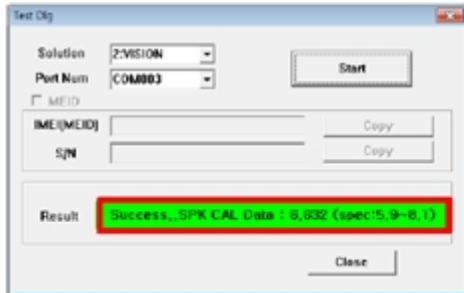
⑥ Confirm the Anyway Jig Setting to press '확인'.

⑦ Connect Mobile device to IF Test cable, then power on to press power key.
※ Phone should be powered off before test.

6. Level 1 Repair



- ⑦ Speaker Calibration will start within 30 seconds after Booting complete.
※ LCD must be turned on in order to test properly.



- ⑧ Confirm whether the Speaker Calibration is done successfully.

6. Level 1 Repair

7-2. Battery Accumulated Usage Initialization

7-2-1 Notice

- It is necessary to initialize the battery accumulated usage for all cases of replacing the batteries.

7-2-2 You need :

- Mobile device
- Laptop or Note PC
- Anyway Jig
- UART Serial Cable
- IF Test Cable (Different by models)

7-2-3 Lay-out



7-2-4 How to Initialize Battery Accumulated Usage

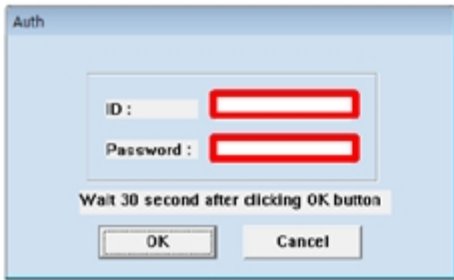


① Run 'Samsung(PSC)_SW_Capture_V008.exe'.

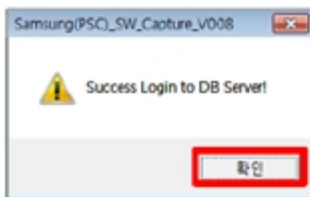


② Check 'Battery' item in the box.

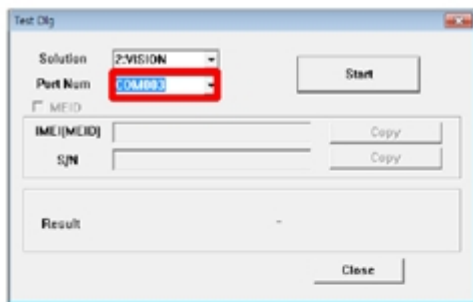
6. Level 1 Repair



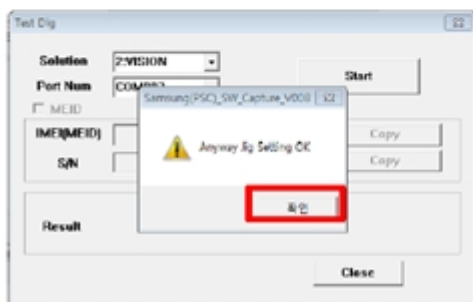
③ Input GSPN ID and Password, then press 'OK'.



④ Confirm Login to DB Server to press '확인'.



⑤ Set Port Number and press 'Start'.



⑥ Confirm the Anyway Jig Setting to press '확인'.

⑦ Connect Mobile device to IF Test cable,
then power on to press power key.
※ Phone should be powered off before test.



⑧ Battery Accumulated Usage Initialization will start
as soon as Booting complete.

※ LCD must be turned on in order to test properly.