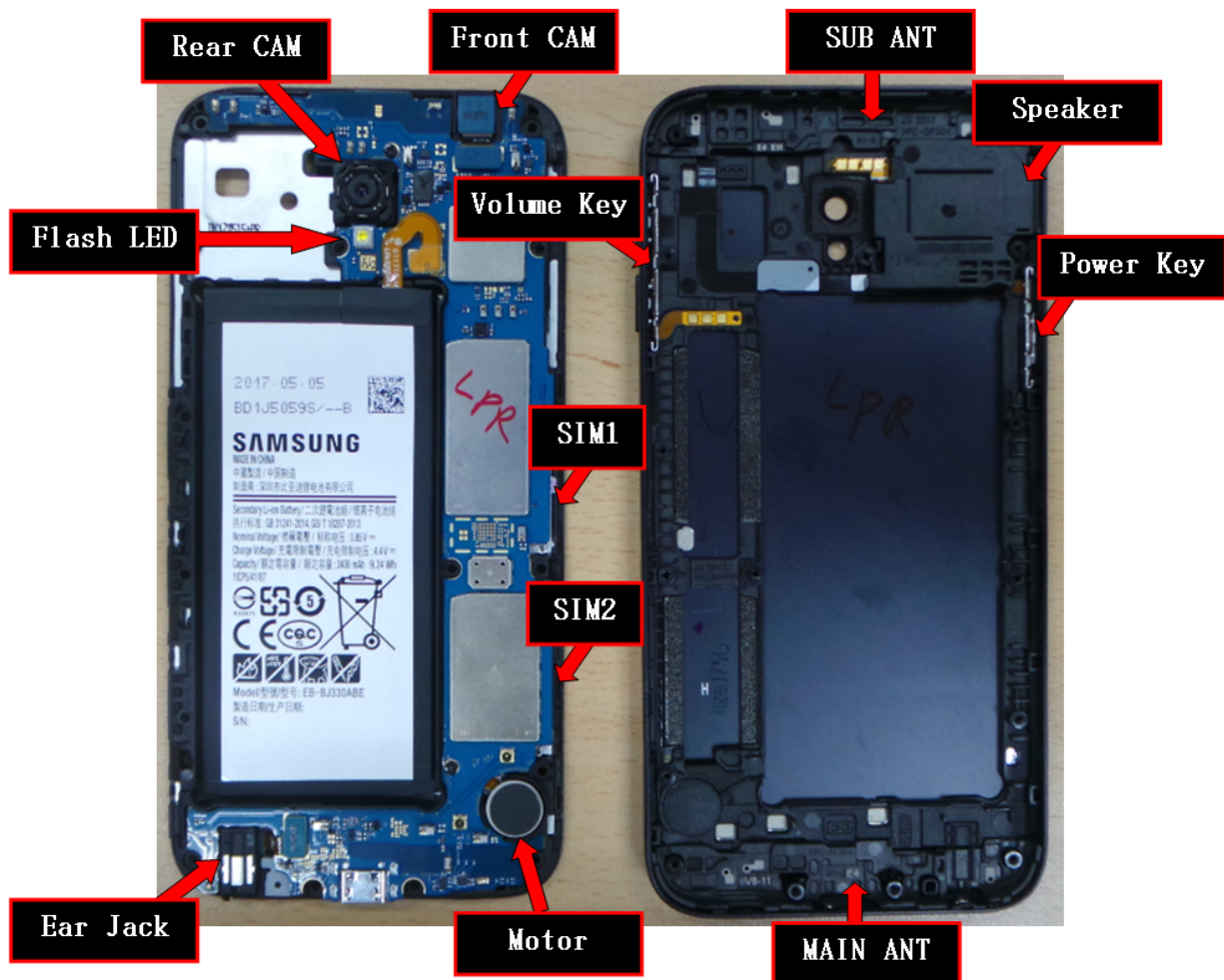


## 7. Level 2 Repair

### 7-1. Components on the Rear Case



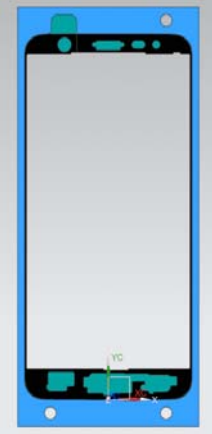
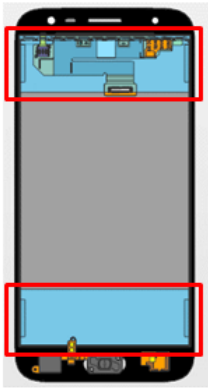
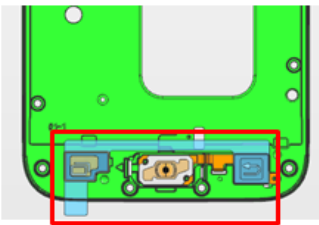
## 7. Level 2 Repair

### 7-2. Pre-requisite

	
<b>Tweezers / Disass'y Stick / Screw Driver</b>	<b>Anti-static Gloves</b>
	
<b>Anti-static Mat</b>	<b>Hot Plate</b>
	
<b>A LCD Disassembly Holder</b>	<b>LCD Disassembly Upper</b>
	
<b>Ethyl Alcohol</b>	<b>Cotton Swab</b>

## 7. Level 2 Repair

### 7-3. Parts which must be changed after repair

BOM Description & part code	Image	Remarks
WINDOW TAPE [GH81-14854A]		
TAPE LCD GASKET SIDE-DOWN SIDE [GH81-14867A]		Whenever the device Is disassembled and reassembled
TAPE TOUCH KEY A/S [GH81-14773A]		

## 7. Level 2 Repair

### 7-4. Disassembly

1

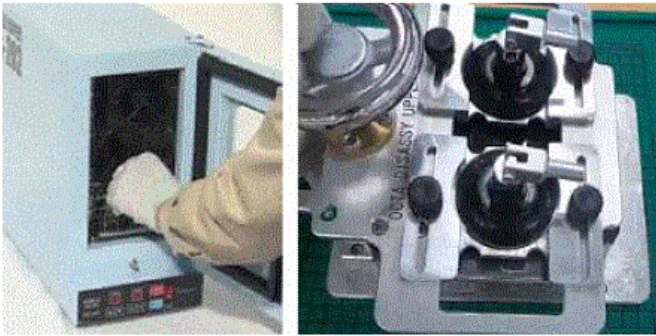
1) Put the device in the chamber as following below heating condition.

- SOC 68% ↓ : 70°C/10~20min

- SOC 68% ↑ : 60°C/10~20min

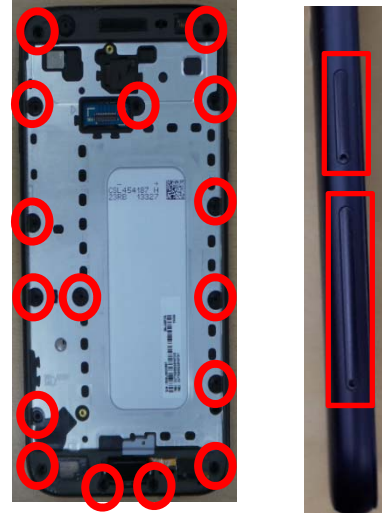
※ Please confirm the heating condition released lastly, and follow it.

2) Detach the LCD.



2

Disassemble SIM Tray 1,2 from device.  
Unscrew 16 Points.



※ Caution

1) Be careful not to damage set and LCD.

※ Caution

1) Be care of scratch and molding damage.

3

Disassemble the REAR.



4

Unscrew 2 Points of PBA and disassemble Ear Jack / Battery connector.



※ Caution

1) Be care of damage to components.

※ Caution

1) Be careful not to damage the PBA.

## 7. Level 2 Repair

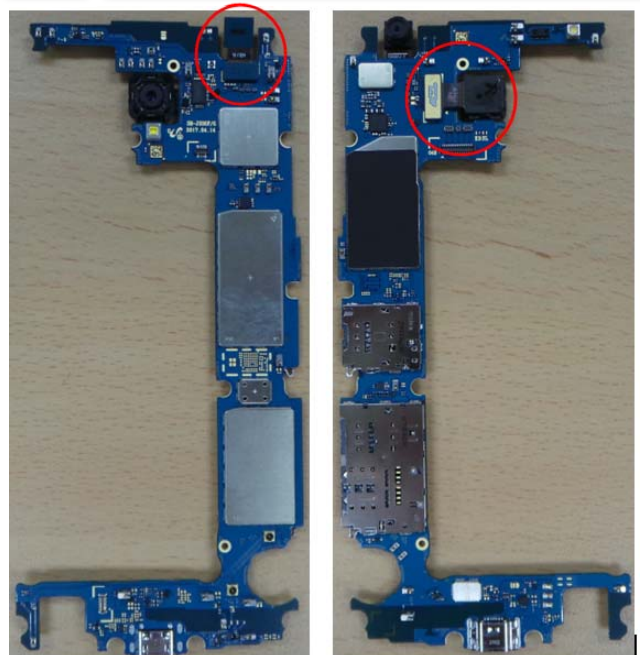
5

Disassemble PBA / Front.



6

Disassemble Front & Rear Camera.



※ Caution

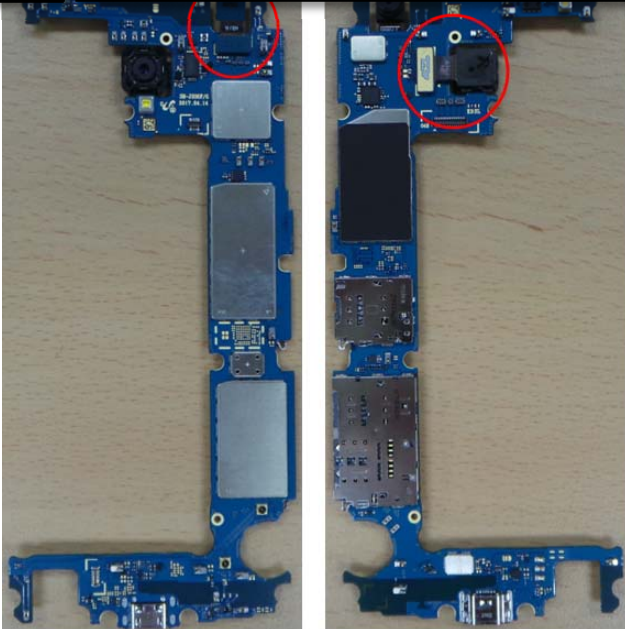
1) Be care of FPCB damage.

※ Caution

## 7. Level 2 Repair

### 7-5. Assembly

#### 1 Assemble Front & Rear Camera.



#### 2 Assemble PBA on Front. Attach Ear Jack and Battery Connector.



※ **Caution**  
1) Be care of FPCB damage.

※ **Caution**  
1) Be care of FPCB damage.

#### 3 Screw 2 points of the PBA. Torque : 1.1 Kgf · cm ± 7%, 1.4\*2.3



#### 4 Assemble Front Assy on REAR vertically.



※ **Caution**  
1) Be careful not to damage the PBA.

※ **Caution**  
1) Be careful not to damage PBA.

## 7. Level 2 Repair

5

**Screw 16 points of the Front.**  
Torque : 1.15 Kgf · cm $\pm$ 7%, 1.6\*3.7



6

**Replace all non-reusable tapes to the new one, and assemble LCD connector and connector cover and Attach LCD**



※ Caution

1) Be care of scratch and molding damage

※ Caution

1) Be careful not to damage the LCD.

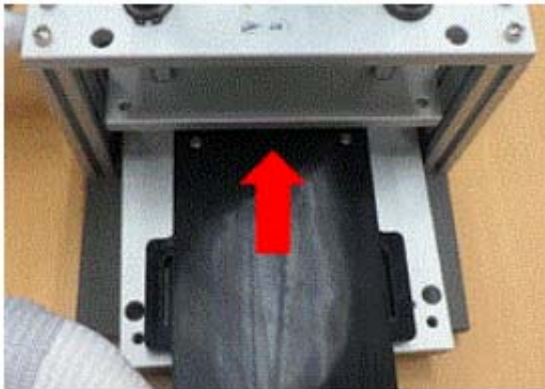
7

**Press the device using pressing jig.**

- Force : 1N

- Time : 1minute

※ Please confirm the pressing condition released lastly, and follow it.



※ Caution