
7. Level 2 Repair

7-1. Components on the Rear Case




7. Level 2 Repair

7-2. Pre-requisite

	
Tweezers / Disass'y Stick / Screw Driver	Anti-static Gloves
	
Anti-static Mat	Hot Plate
	
A OCTA Disassembly Holder	OCTA Disassembly Upper
	
Ethyl Alcohol	Cotton Swab

7. Level 2 Repair

7-3. Parts which must be changed after repair

BOM Description & part code	Image	Remarks
<p>A/S-TAPE BACK COVER OUTER [GH81-16718A]</p>		<p>Whenever re-assemble Backglass. Remove old tape and use new tape</p>
<p>Fingerprint Tape [GH81-16815A]</p>		<p>Whenever re-assemble Fingerprint. Remove old tape and use new tape</p>

7. Level 2 Repair

7-4. Disassembly

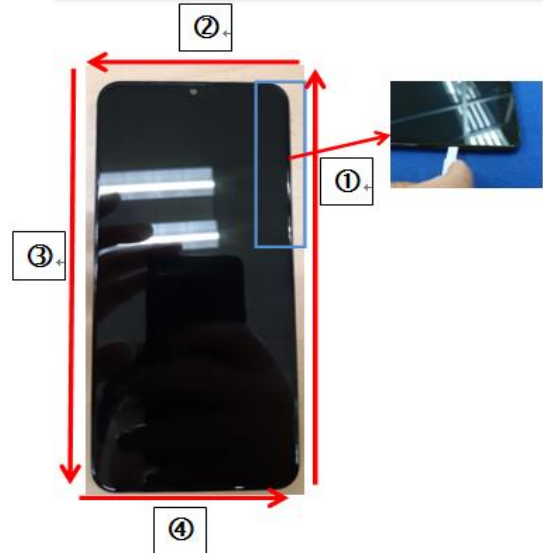
1

Remove SIM/SD Tray.
Detach Back cover using tool.



2

Remove Rear Cover
SIM/SD area → Upper → Right → Below



※ Caution
Be care of scratch

※ Caution
Be care of scratch

3

Remove Finger print FPCB using tool and
detach Finger print



4

Remove all 13 points of Rear Screws



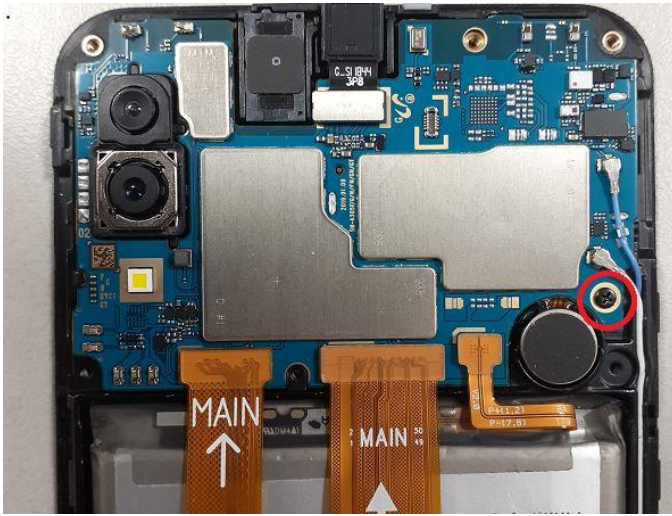
※ Caution
1) Be care of scratch
2) Be care of Rear and Finger print damage

※ Caution
Be care of Rear damage

7. Level 2 Repair

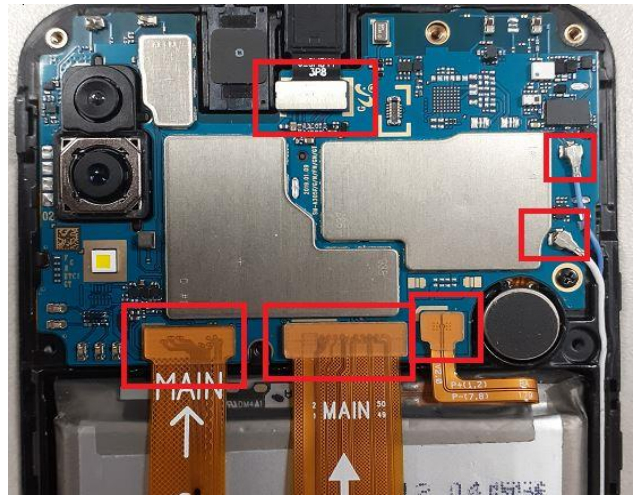
5

Remove 1 PBA screw



6

Remove the PBA and C to C FPCB and Batt Conn and BLACK, WHITE coaxial cable and VT Camera.



※ Caution

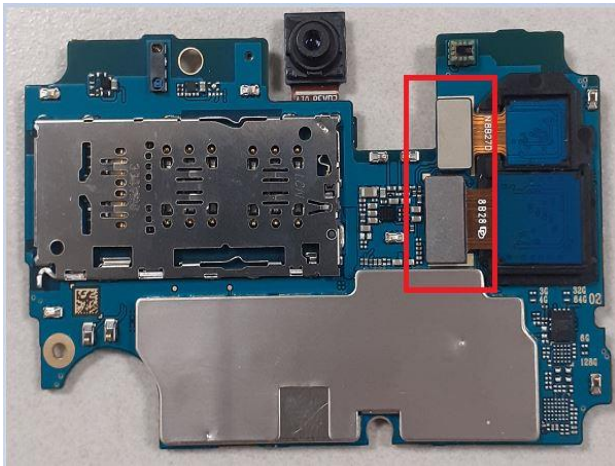
Be careful not to damage the PBA

※ Caution

Be care of several kinds of damage at PBA and FPCB.

7

Remove CAM connectors

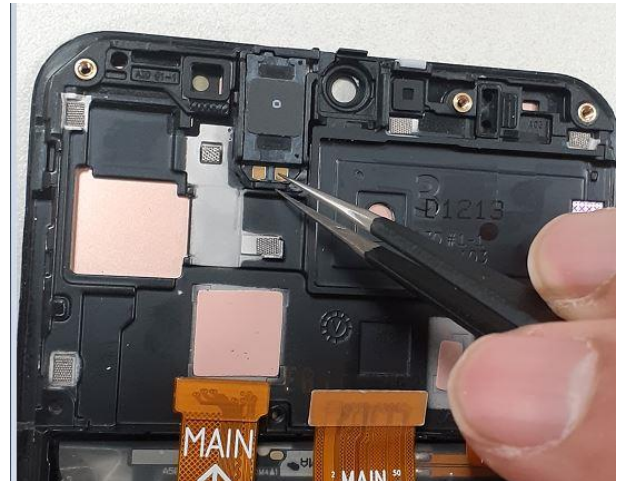


※ Caution

Be careful not to damage the Camera Module

8

Detach RCV from Front Ass'y.



※ Caution

Be careful not to damage the RCV.

Confidential and proprietary-the contents in this service guide subject to change without prior notice

Distribution, transmission, or infringement of any content or data from this document without Samsung's written authorization is strictly prohibited.

7. Level 2 Repair

9

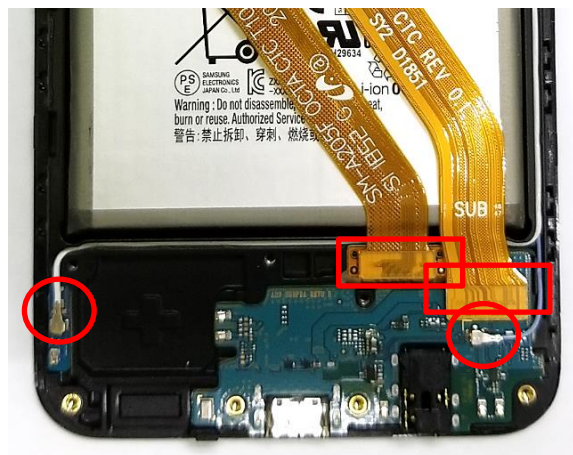
Detach Motor from Front Ass'y.



※ **Caution**
Be careful not to damage the Motor.

10

Remove C to C FPCB and BLACK, WHITE Coaxial cable.



※ **Caution**
Be careful not to damage the C to C FPCB and BLACK, WHITE coaxial cable.

11

Detach HB PBA and the Sub PBA.



※ **Caution**
Be careful not to damage HB PBA and the Sub PBA.

12

Detach SPK from Rear Ass'y



※ **Caution**
Be careful not to damage the SPK.

7. Level 2 Repair

7-5. Assembly

1

Attach SPK on Rear Ass'y.



※ **Caution**
Be care of SPK damage.

2

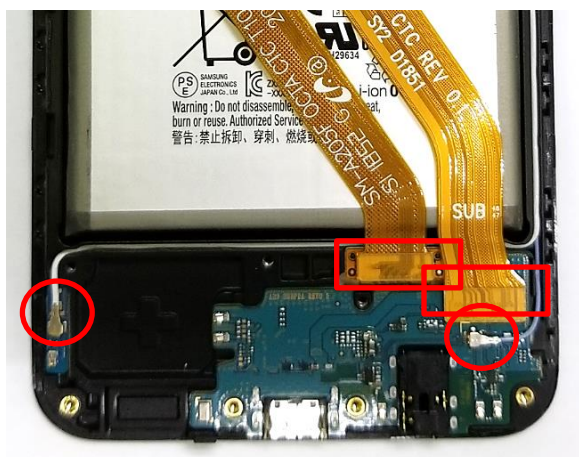
Attach HB PBA and Sub PBA on Front Ass'y.



※ **Caution**
Be care of Sub PBA damage.

3

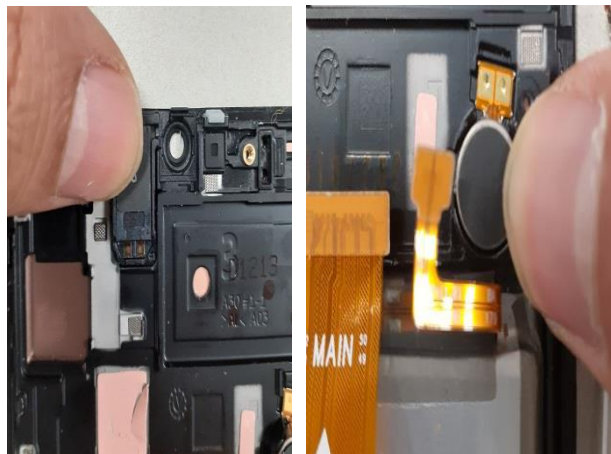
Attach C to C FPCB and BLACK, WHITE coaxial cable.



※ **Caution**
Please keep the guide line for C to C FPCB and BLACK, WHITE coaxial Cable.

4

Attach Motor and Receiver in upper area

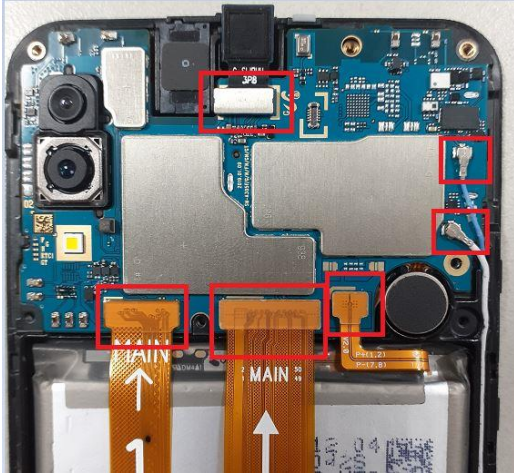


※ **Caution**
1) Be care of scratch CAM lens
2) Be care of damage each part.

7. Level 2 Repair

5

Assemble the PBA and C to C FPCB and Batt Conn and BLACK, WHITE coaxial cable and VT Camera.



6

Screw insertion 1 Point.
* Torque Value : $1.2 \pm 7\%$



※ Caution
Check for each connector connection

※ Caution
Be care of PBA damage.

7

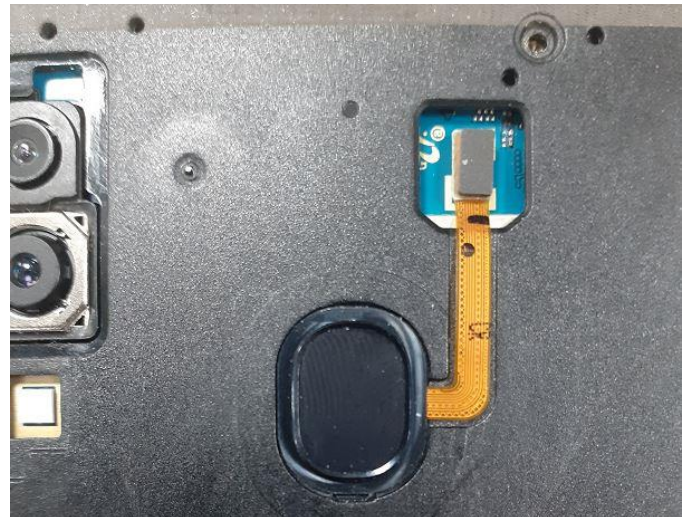
Assemble Rear and screw insertion 13 point
* Torque Value : $1.2 \pm 7\%$



※ Caution
Be care of PBA damage

8

Assemble Finger print module and connect FPCB



※ Caution
Be care of Finger Print FPCB damage.

Confidential and proprietary-the contents in this service guide subject to change without prior notice

Distribution, transmission, or infringement of any content or data from this document without Samsung's written authorization is strictly prohibited.

7. Level 2 Repair

9

Assemble cover rear and insert SIM/SD Tray



※ Caution

Be care of scratch Rear cover