

7. Level 2 Repair

7-1. Components on the Rear Case



7. Level 2 Repair

7-2. Pre-requisite

	
<p>Tweezers / Disass'y Stick / Screw Driver</p>	<p>Anti-static Gloves</p>
	
<p>Anti-static Mat</p>	<p>Hot Plate</p>
	
<p>A OCTA Disassembly Holder</p>	<p>OCTA Disassembly Upper</p>
	
<p>Ethyl Alcohol</p>	<p>Cotton Swab</p>

7. Level 2 Repair

7-3. Parts which must be changed after repair

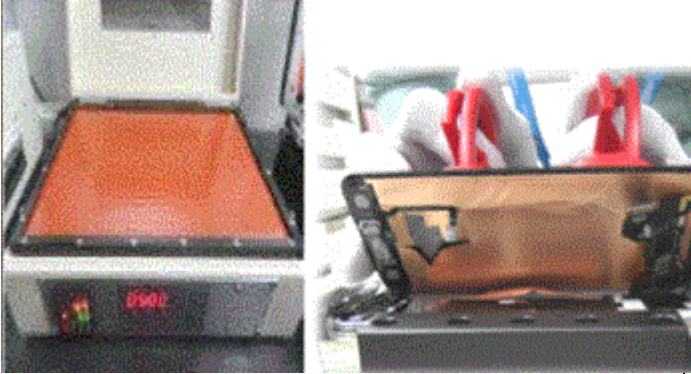
BOM description & part code	Image	Remarks
<p>A/S-TAPE MAIN WINDOW [GH81-16187A]</p>		<p>Replace for OCTA repair</p>
<p>A/S-TAPE SUS-Bracket Tape [GH81-16209A]</p>		
<p>A/S-TAPE REAR DECO [GH81-16190A]</p>		<p>Replace for Back Glass repair</p>

7. Level 2 Repair

7-4. Disassembly

1

- Put the device in the chamber as following below heating condition
 - SOC 68%↓: 70°C/10~20 minute
 - SOC 68%↑: 70°C/10~20 minute
 ※ Please confirm the heating condition released lastly, and follow it.



2

Detach the LCD assembly



※ Caution

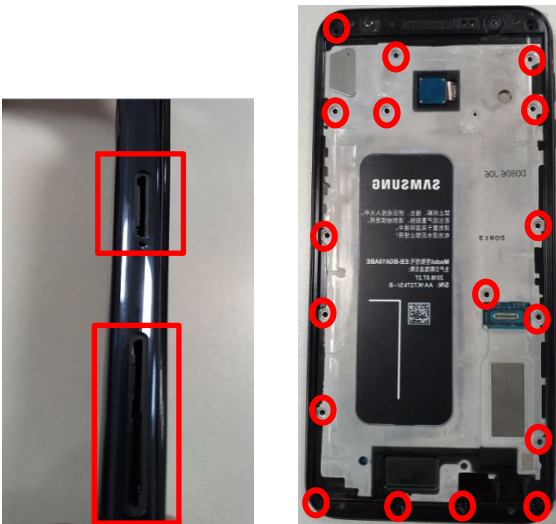
- Be care of scratch

※ Caution

- Be care of scratch

3

Unscrew 18 Point and disassemble SIM Tray from device



4

Disassemble Rear.



※ Caution

- Be care of Rear damage

※ Caution

- Be care of scratch
- Be care of Rear and connector damage

7. Level 2 Repair

5 Unscrew PBA 2points.



6 Disassemble Front CAM connector of PBA.



⚠ **Caution**

1) Be careful not to damage the PBA

⚠ **Caution**

1) Be careful not to damage the PBA

7 Detach other components.



8 Detach SPK from Front Ass'y.



⚠ **Caution**

1) Be care of several kinds of damage

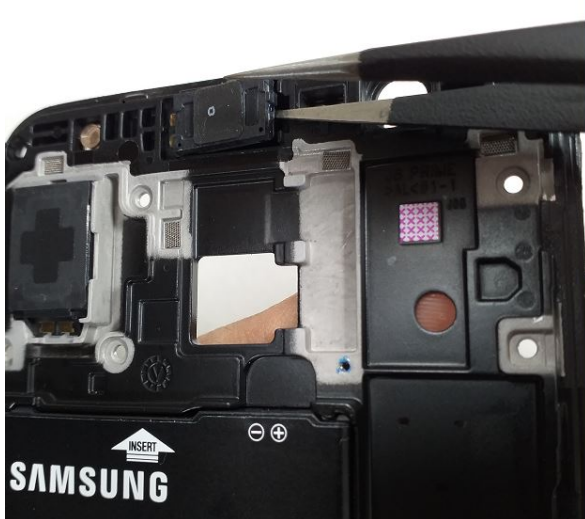
⚠ **Caution**

1) Be careful not to damage the SPK.

7. Level 2 Repair

9

Detach RCV from Front Ass'y



※ Caution

1) Be careful not to damage the RCV.

10

Detach Motor from Front Ass'y



※ Caution

1) Be careful not to damage the Motor.

7. Level 2 Repair

7-5. Assembly

1

Attach SPK on Front Ass'y.



※ Caution

1) Be care of SPK damage.

2

Attach RCV on Front Ass'y.



※ Caution

1) Be care of RCV damage.

3

Attach Motor on Front Ass'y.

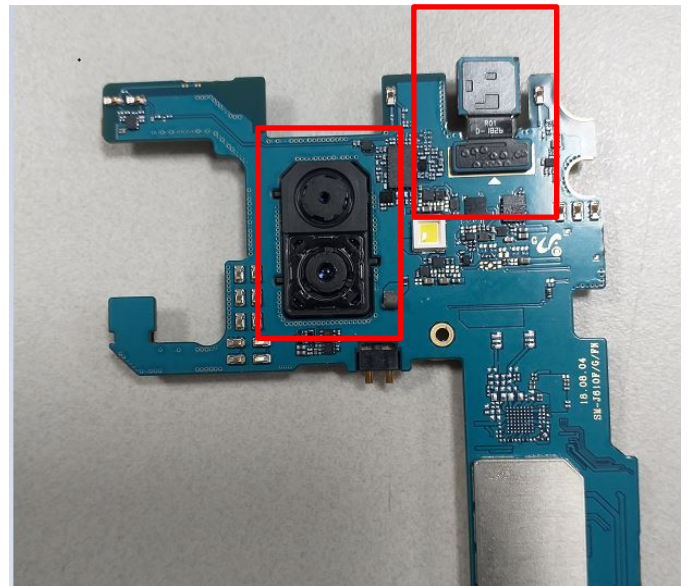


※ Caution

1) Be care of Motor damage.

4

Attach Front CAM, MAIN CAM on PBA.



※ Caution

1) Be care of PBA damage.

7. Level 2 Repair

5

Assemble PBA to Front case and tightened 2 points of PBA screw.
* Torque Value : 1.0 ± 0.1 kgfcm



6

Assemble the REAR in sequence.
(1.Bottom 2. Top)



※ Caution

- 1) Be care of scratch and REAR damage
- 2) Check for contact damage.(red area)

※ Caution

- 1) Be care of scratch and REAR damage
- 2) Check for contact damage.(red area)

7

Screw insertion 18 Point.
* Torque Value : 1.3 ± 0.1 kgfcm



8

Attach the basket SVC tape(GH81-16209A) to the bracket. And then assemble OCTA with LCD cap insertion.



※ Caution

- 1) Be care of Rear damage

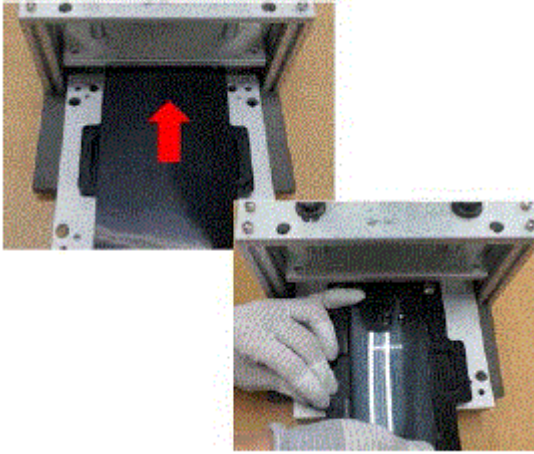
※ Caution

- 1) Be care of LCD Connector damage

7. Level 2 Repair

9

Press OCTA after it has assembled
- Press spec : Force 1N, Time : 60 seconds



✘ Caution