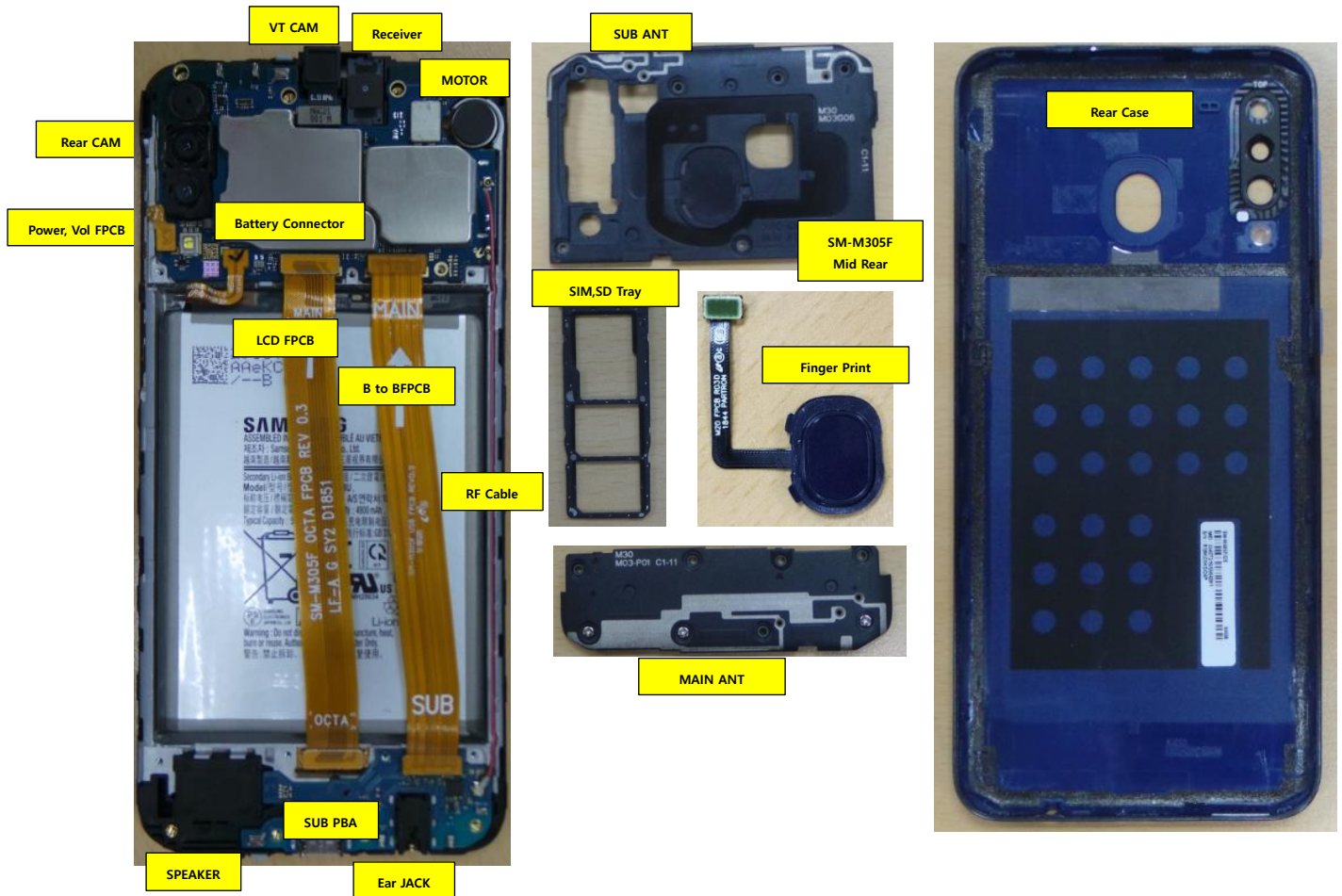


## 7. Level 2 Repair

### 7-1. Components on the Rear Case



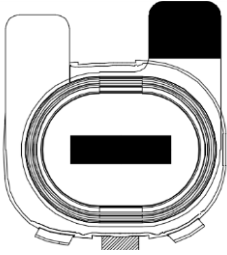
## 7. Level 2 Repair

### 7-2. Pre-requisite

	
<p><b>Tweezers / Disass'y Stick / Screw Driver</b></p>	<p><b>Anti-static Gloves</b></p>
	
<p><b>Anti-static Mat</b></p>	<p><b>Hot Plate</b></p>
	
<p><b>A OCTA Disassembly Holder</b></p>	<p><b>OCTA Disassembly Upper</b></p>
	
<p><b>Ethyl Alcohol</b></p>	<p><b>Cotton Swab</b></p>


## 7. Level 2 Repair

### 7-3. Parts which must be changed after repair

BOM Description & part code	Image	Remarks
<p style="text-align: center;">Finger Print Tape</p> <p style="text-align: center;">[GH81-17674A]</p>		<p style="text-align: center;">Whenever re-assemble Rear cover at Finger Print part. Remove old tape and use new tape</p>

## 7. Level 2 Repair

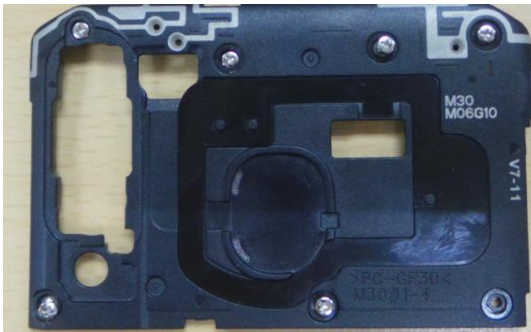
### 7-4. Disassembly

<p><b>1</b> Remove SIM/SD Tray..</p> 	<p><b>2</b> Remove Rear Cover. SIM/SD area → Upper → Right → Below</p> 
<p>※ <b>Caution</b> Be care of scratch.</p>	<p>※ <b>Caution</b> Be care of scratch.</p>
<p><b>3</b> Remove Finger print FPCB using tool and detach Finger print.</p> 	<p><b>4</b> Remove Mid Rear Screw.</p> 
<p>※ <b>Caution</b> 1) Be care of scratch. 2) Be care of Rear and Finger print damage.</p>	<p>※ <b>Caution</b> Be care of Rear damage.</p>

## 7. Level 2 Repair

5

Remove Mid Rear.



6

Remove 1 PBA screw.

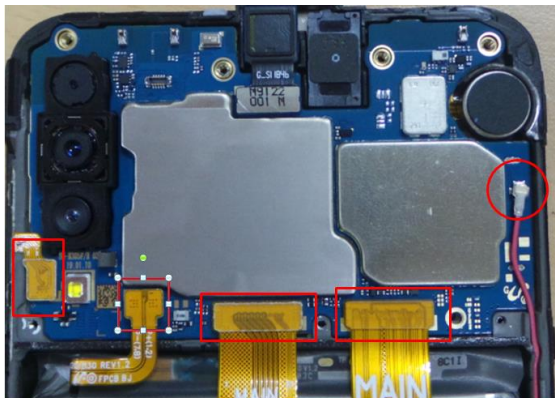


※ **Caution**  
Be care of scratch.

※ **Caution**  
Be careful not to damage the PBA.

7

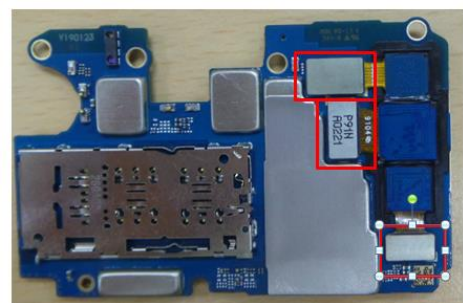
Remove FPCB Connectors.



※ **Caution**  
Be care of several kinds of damage at PBA and FPCB.

8

Remove CAM connectors.



※ **Caution**  
Be careful not to damage the Camera Module.

## 7. Level 2 Repair

9

Detach RCV from Front Ass'y.



10

Detach Motor from Front Ass'y.

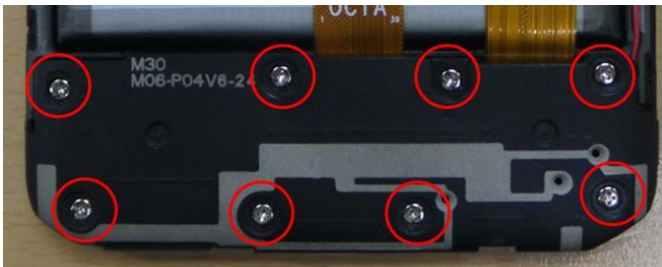


※ **Caution**  
 Be careful not to damage the RCV.

※ **Caution**  
 Be careful not to damage the Motor.

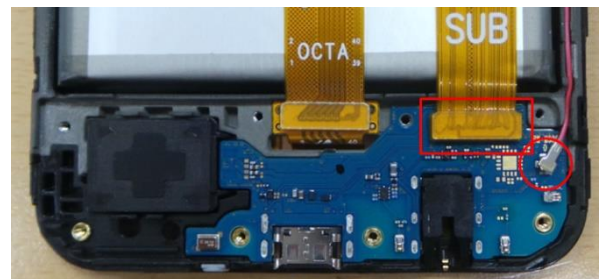
11

Remove Main ANT.



12

Remove B to B FPCB and Sub PBA and RF Cable.



※ **Caution**  
 Be careful scratch.

※ **Caution**  
 Be careful not to damage the Sub PBA and connector.

## 7. Level 2 Repair

13

Remove SPK.



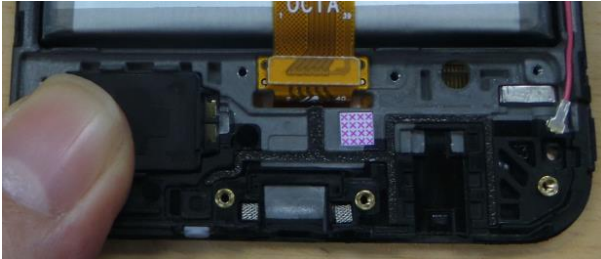
※ **Caution**  
Be careful not to damage the SPK.

## 7. Level 2 Repair

### 7-5. Assembly

1

Attach SPK on Front Ass'y.



2

Attach Sub PBA on Front Ass'y.

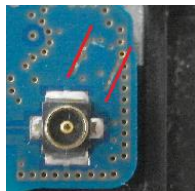
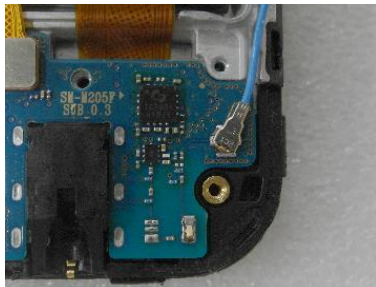
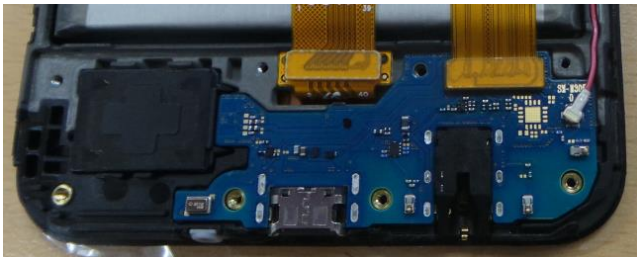


※ **Caution**  
 Be care of SPK damage.

※ **Caution**  
 Be care of RCV damage.

3

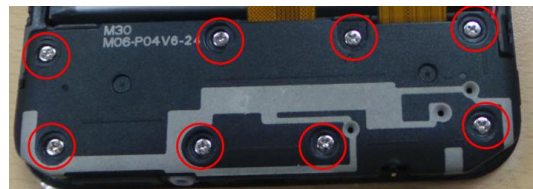
Attach RF Cable and B to B FPCB.



※ **Caution**  
 Please keep the guide line for RF Cable.

4

Attach Main ANT in below area.  
 and Screw insertion 8 points  
 Torque Value : 1.15kgf  $\pm$  7%



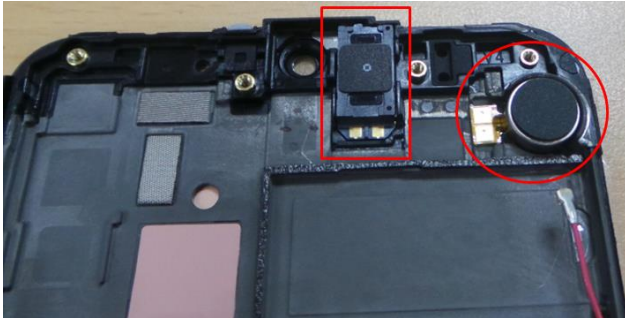
※ **Caution**  
 Please keep the guide line for RF Cable.



## 7. Level 2 Repair

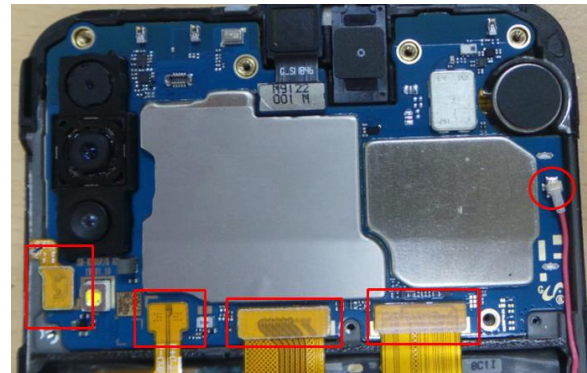
5

Attach Motor and Receiver in upper area.



6

Assemble the PBA and connect FPCB.



**※ Caution**

- 1) Be care of scratch CAM lens.
- 2) Be care of damage each part.

**※ Caution**

- 1) Be care of camera lens.
- 2) Check for each connector connection.

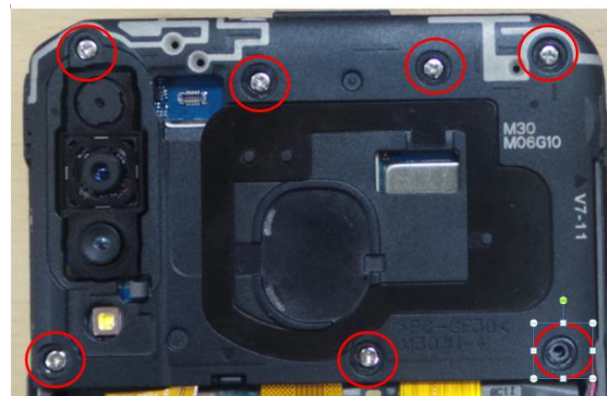
7

Screw insertion 1 Point.  
\* Torque Value :  $1.2 \pm 7\%$



8

Assemble Mid Rear and Sub ANT and screw insertion 7 point  
\* Torque Value :  $1.2 \pm 7\%$



**※ Caution**

Be care of PBA damage.

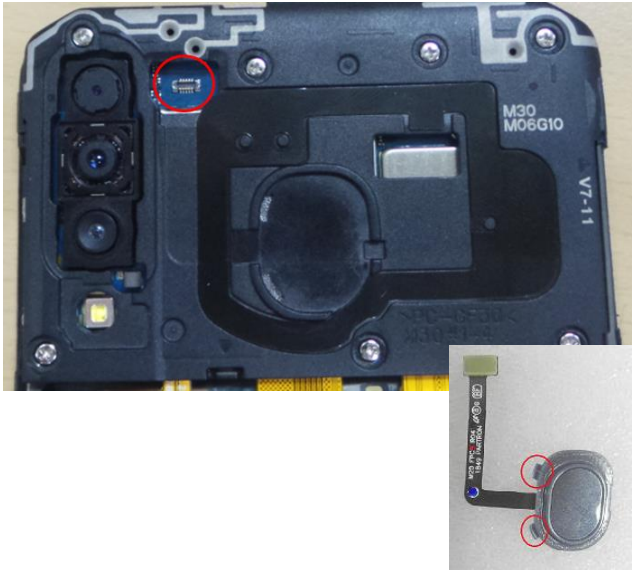
**※ Caution**

Be care of Tape damage.

## 7. Level 2 Repair

9

Assemble Finger print module and connect FPCB.



※ **Caution**

- 1) Be care of Finger Print FPCB damage.
- 2) Be care of 2 point of hook.

10

Assemble cover rear and insert SIM/SD Tray.



※ **Caution**

Be care of scratch Rear cover.