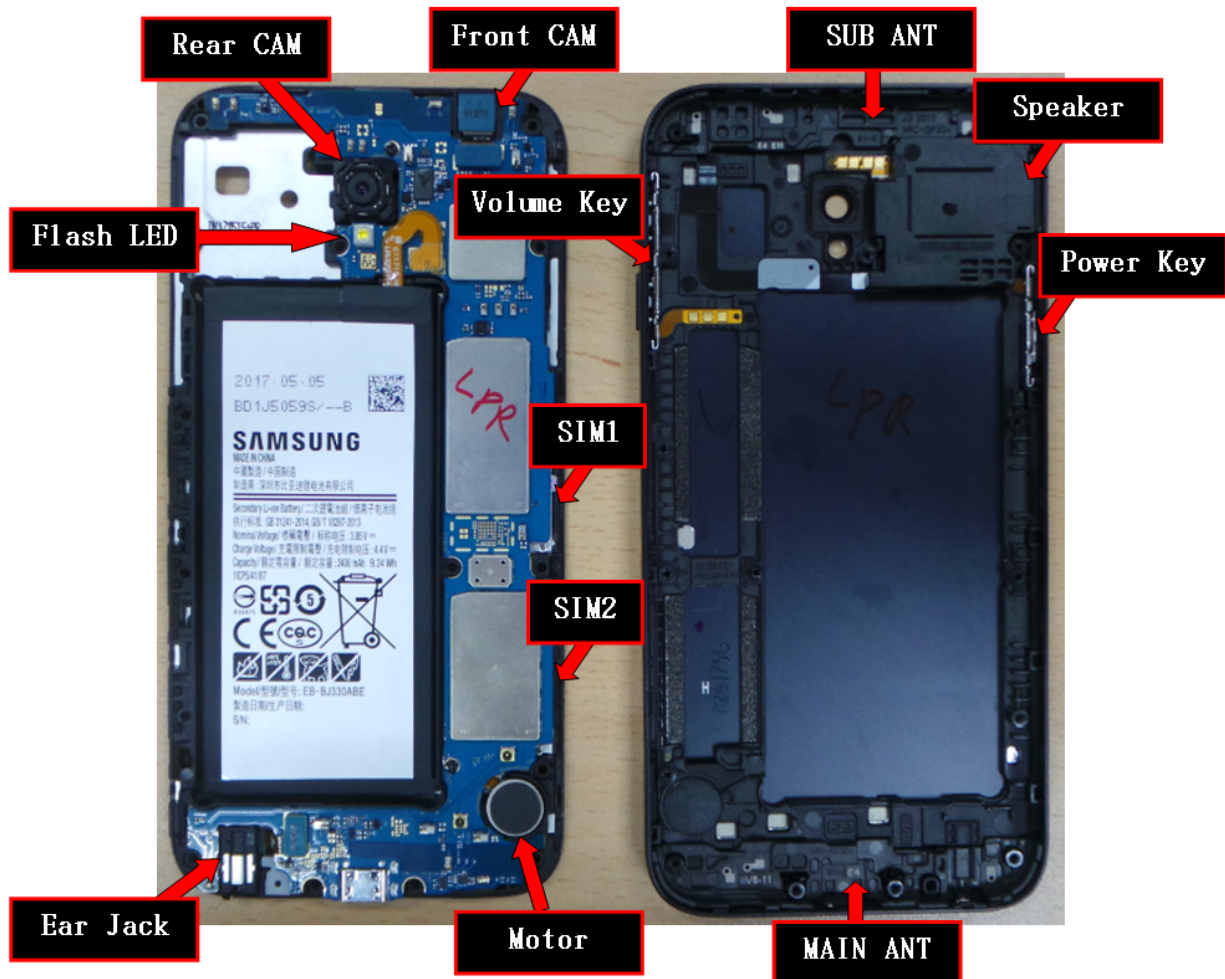


7. Level 2 Repair

7-1. Components on the Rear Case



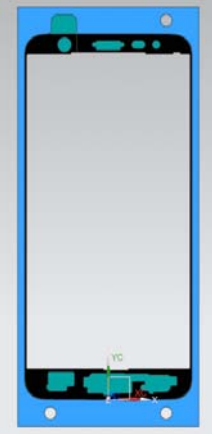
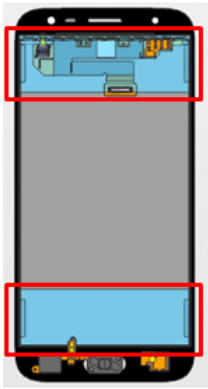
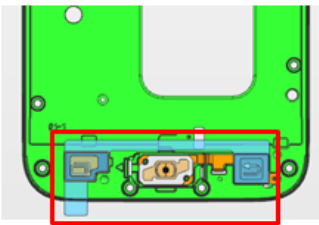
7. Level 2 Repair

7-2. Pre-requisite

	
<p>Tweezers / Disass'y Stick / Screw Driver</p>	<p>Anti-static Gloves</p>
	
<p>Anti-static Mat</p>	<p>Hot Plate</p>
	
<p>A LCD Disassembly Holder</p>	<p>LCD Disassembly Upper</p>
	
<p>Ethyl Alcohol</p>	<p>Cotton Swab</p>

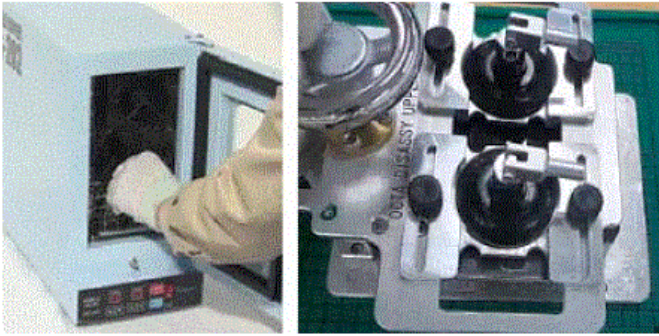
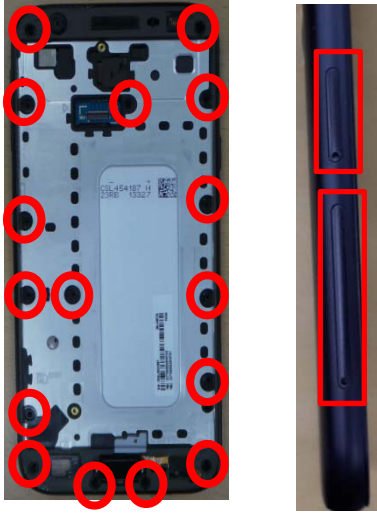


7. Level 2 Repair

7-3. Parts which must be changed after repair

BOM Description & part code	Image	Remarks
WINDOW TAPE [GH81-14854A]		
TAPE LCD GASKET SIDE-DOWN SIDE [GH81-14867A]		Whenever the device Is disassembled and reassembled
TAPE TOUCH KEY A/S [GH81-14773A]		

7. Level 2 Repair

7-4. Disassembly

<div data-bbox="124 300 762 555" style="border: 1px solid black; padding: 5px;"> <p>1</p> <p>1) Put the device in the chamber as following below heating condition.</p> <ul style="list-style-type: none"> - SOC 68% ↓ : 70℃/10~20min - SOC 68% ↑ : 60℃/10~20min <p>※ Please confirm the heating condition released lastly, and follow it.</p> <p>2) Detach the LCD.</p> </div> <div data-bbox="116 680 777 1014">  </div>	<div data-bbox="842 300 1497 394" style="border: 1px solid black; padding: 5px;"> <p>2</p> <p>Disassemble SIM Tray 1,2 from device. Unscrew 16 Points.</p> </div> <div data-bbox="975 499 1353 1010">  </div>
<p>※ Caution</p> <p>1) Be careful not to damage set and LCD.</p>	<p>※ Caution</p> <p>1) Be care of scratch and molding damage.</p>
<div data-bbox="124 1160 762 1223" style="border: 1px solid black; padding: 5px;"> <p>3</p> <p>Disassemble the REAR.</p> </div> <div data-bbox="256 1258 561 1778">  </div>	<div data-bbox="826 1160 1481 1279" style="border: 1px solid black; padding: 5px;"> <p>4</p> <p>Unscrew 2 Points of PBA and disassemble Ear Jack / Battery connector.</p> </div> <div data-bbox="1038 1317 1315 1877">  </div>
<p>※ Caution</p> <p>1) Be care of damage to components.</p>	<p>※ Caution</p> <p>1) Be careful not to damage the PBA.</p>

7. Level 2 Repair

5

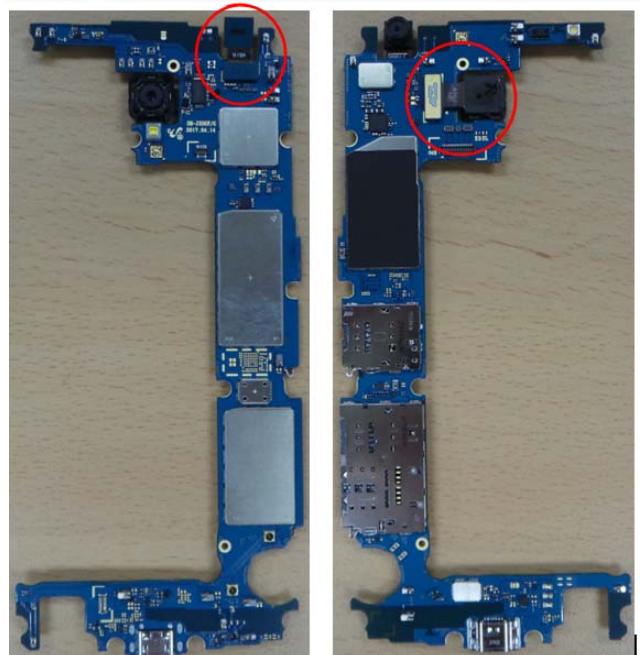
Disassemble PBA / Front.



※ **Caution**
1) Be care of FPCB damage.

6

Disassemble Front & Rear Camera.

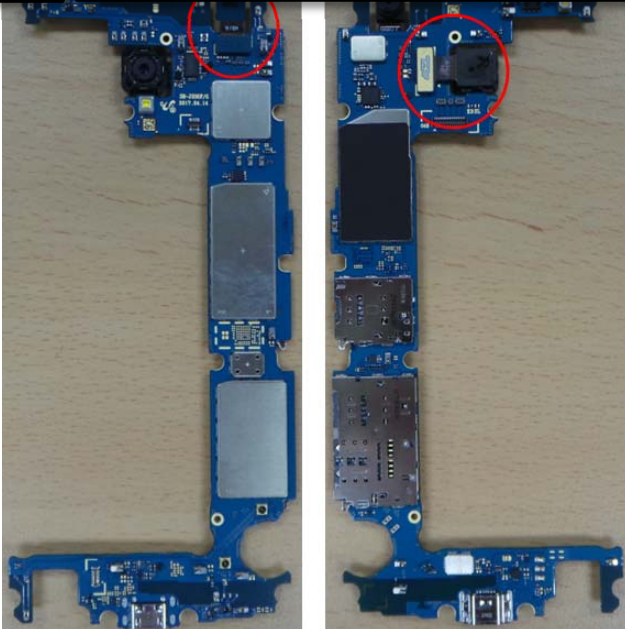


※ **Caution**

7. Level 2 Repair

7-5. Assembly

1 Assemble Front & Rear Camera.



2

Assemble PBA on Front. Attach Ear Jack and Battery Connector.



※ **Caution**

1) Be care of FPCB damage.

※ **Caution**

1) Be care of FPCB damage.

3

Screw 2 points of the PBA. Torque : 1.1 Kgf · cm ± 7%, 1.4*2.3



4

Assemble Front Assy on REAR vertically.



※ **Caution**

1) Be careful not to damage the PBA.

※ **Caution**

1) Be careful not to damage PBA.

7. Level 2 Repair

5

Screw 16 points of the Front.
Torque : 1.15 Kgf · cm \pm 7%, 1.6*3.7



6

Replace all non-reusable tapes to the new one, and assemble LCD connector and connector cover and Attach LCD



※ **Caution**

1) Be care of scratch and molding damage

※ **Caution**

1) Be careful not to damage the LCD.

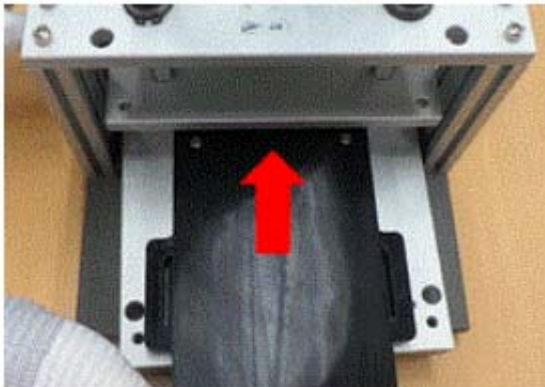
7

Press the device using pressing jig.

- Force : 1N

- Time : 1minute

※ **Please confirm the pressing condition released lastly, and follow it.**



※ **Caution**