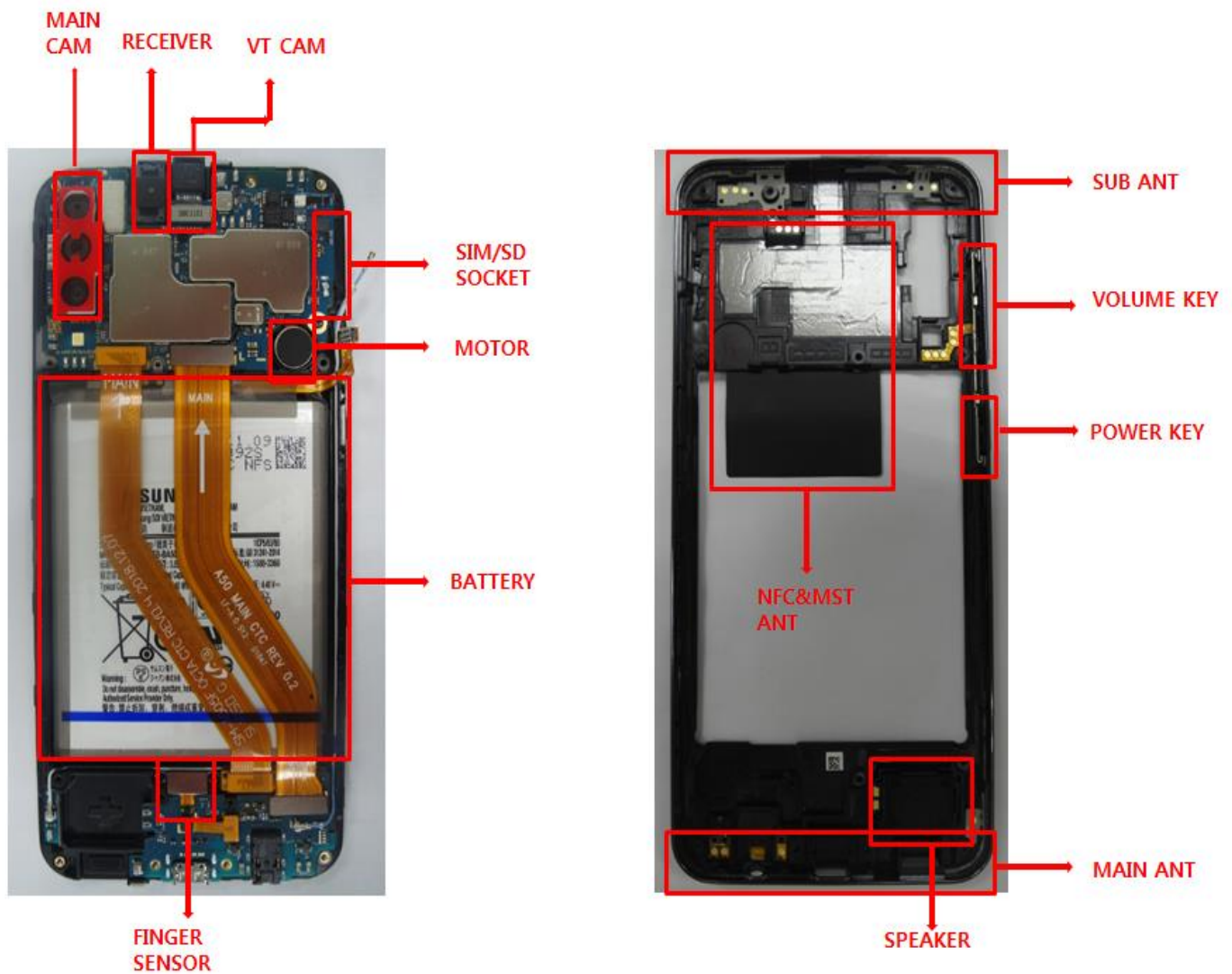

7. Level 2 Repair

7-1. Components on the Rear Case




7. Level 2 Repair

7-2. Pre-requisite

	
Tweezers / Disass'y Stick / Screw Driver	Anti-static Gloves
	
Anti-static Mat	AOD for Tablet
	
Ethyl Alcohol	Cotton Swab

7. Level 2 Repair

7-3. Parts which must be changed after repair

BOM Description & part code	Image	Remarks
Backglass Outside tape [GH02-19324A]		Left items must be changed to the new one in case of disassemble the Back glass

7. Level 2 Repair

7-4. Disassembly

1

- 1) Put the device in the AOD jig.
Set the AOD condition
 - SOC 68%↓: Upper 70 °C/ Lower 60 °C 5min
 - SOC 68%↑: Upper 60 °C/ Lower 60 °C 5min
- 2) Disassemble the OCTA using the AOD.
※ Below picture shows how to detach Back Glass using service jig, however you can use manufactural jig if possible.



2

- Disassemble SIM Tray from device.
Unscrew 13Points.



※ Caution

Be careful not to damage set and OCTA.

※ Caution

Be care of scratch and molding damage.

3

- Disassemble the REAR from Front Assy.

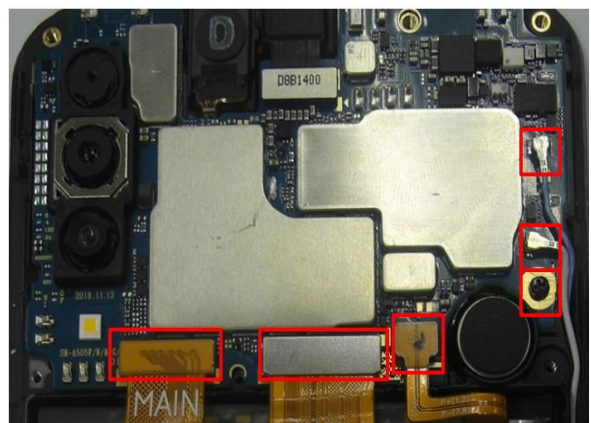


※ Caution

Be care of damage to components.

4

1. Disassemble Connector 3ea from PBA.
2. Unscrew 1 Points from PBA.
3. Disassemble Coaxial Cable 2ea from PBA.



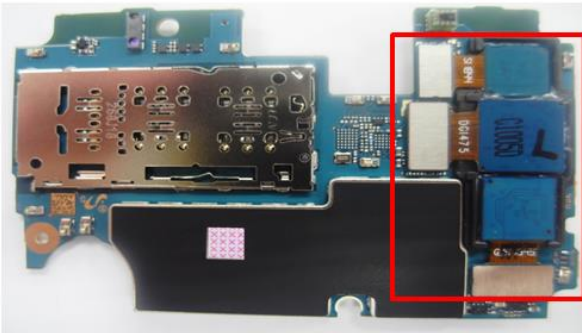
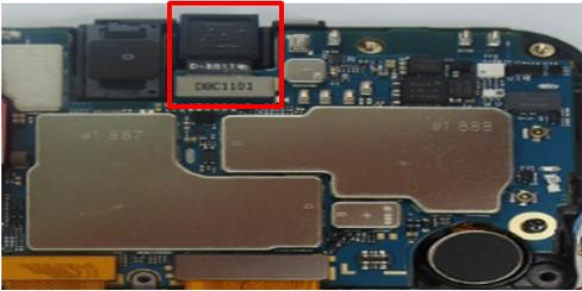
※ Caution

Be careful not to damage the PBA.

7. Level 2 Repair

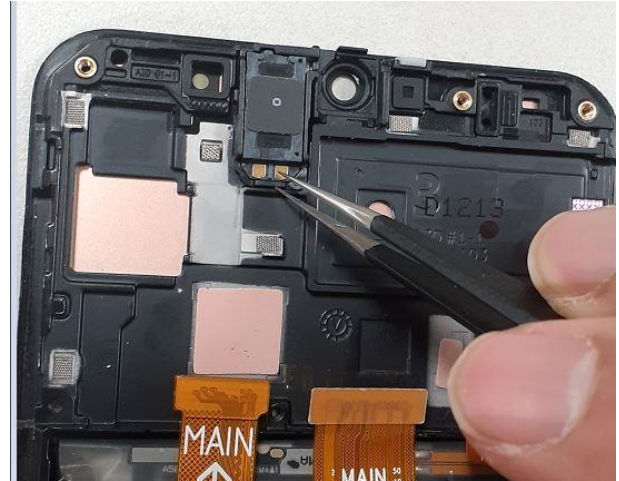
5

Disassemble PBA Assy from Front Assy.
Disassemble Front /Rear Camera from PBA.



6

Detach RCV from Front Ass'y.



※ **Caution**

1) Be careful not to damage the PBA.

※ **Caution**

Be careful not to damage the RCV.

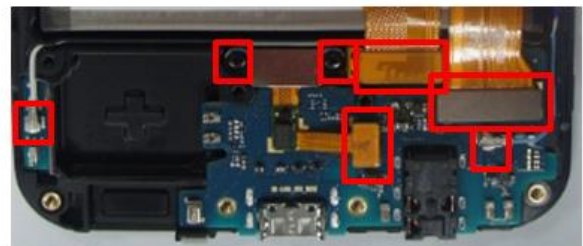
7

Detach Motor from Front Ass'y.



8

Remove FPCB 2ea and Fingersensor fix screw 2ea+Fingersensor FPCB and RF Cable 2ea.



※ **Caution**

Be careful not to damage the Motor.

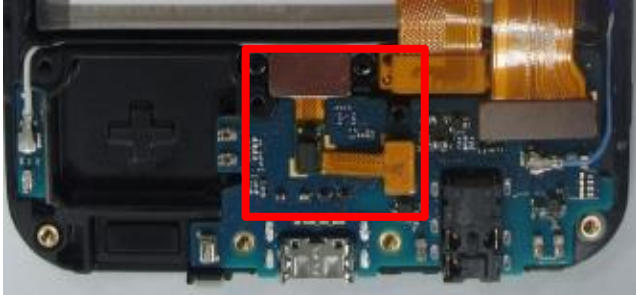
※ **Caution**

Be careful not to damage the Sub PBA and connector

7. Level 2 Repair

9

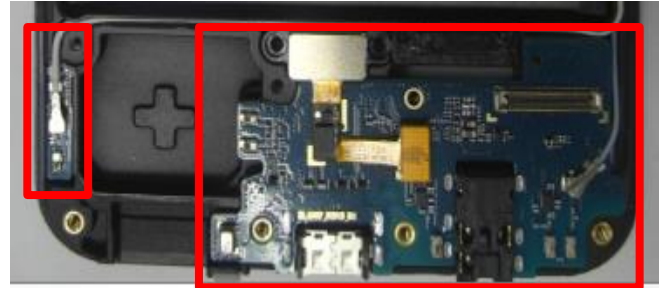
Detach Finger sensor.



※ **Caution**
Be careful not to damage fingersensor and the Sub PBA

10

Detach HB PBA and the Sub PBA.



※ **Caution**
Be careful not to damage HB PBA and the Sub PBA

11

Detach SPK from Rear Ass'y.



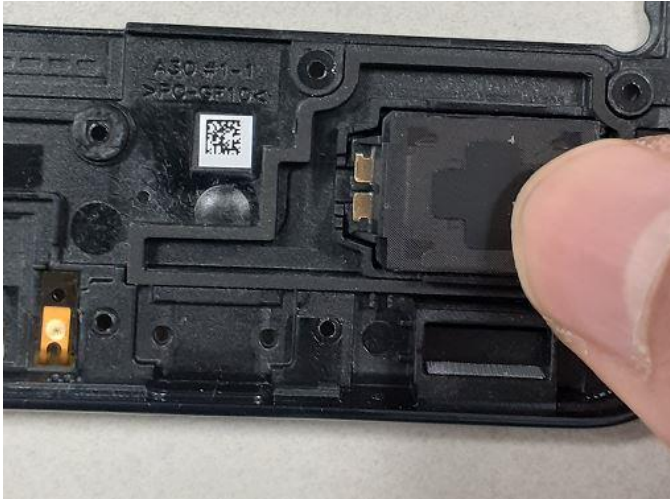
※ **Caution**
Be careful not to damage the SPK

7. Level 2 Repair

7-5. Assembly

1

Attach SPK on Rear Ass'y.



2

Attach Sub PBA and HB PBA on Front Ass'y.



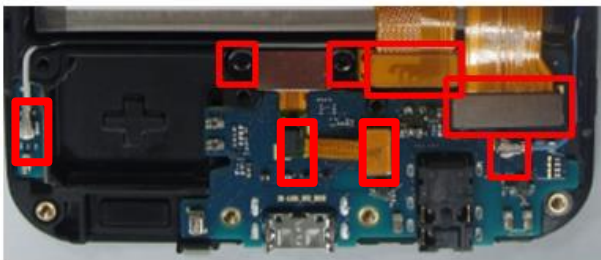
※ **Caution**
Be care of SPK damage.

※ **Caution**
Be care of Sub PBA damage.

3

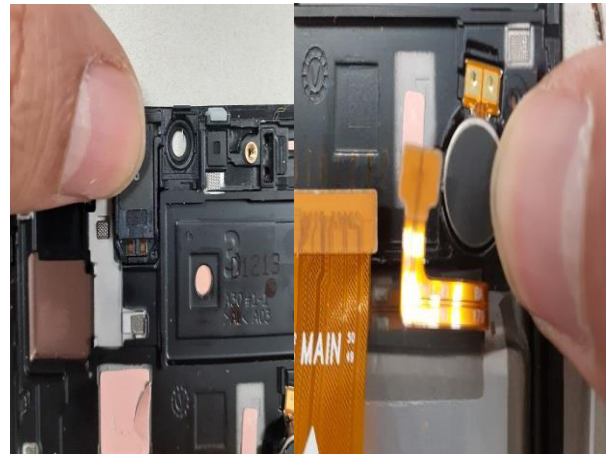
Attach RF Cable 2ea and FPCB 2ea,
fingersensor Screw 2ea & FPCB.

Screw insertion 2 Point.
* Torque Value : 0.95



4

Attach Motor and Receiver in upper area.



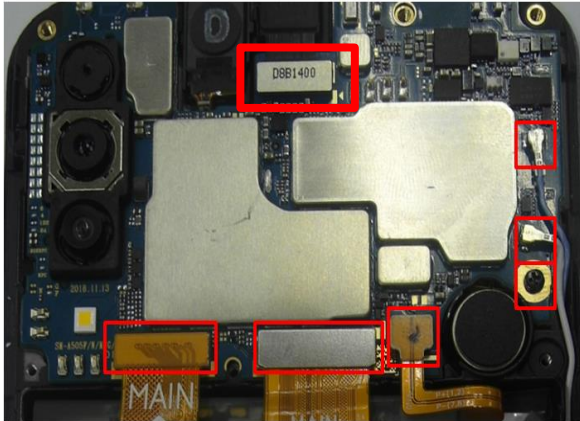
※ **Caution**
Please keep the guide line for C to C FPCB and BLACK,
WHITE COAXIAL CABLE.

※ **Caution**
1) Be care of scratch CAM lens
2) Be care of damage each part.

7. Level 2 Repair

5

Assemble the PBA and C to C FPCB 2ea and Batt Conn and BLUE , WHITE COAXIAL CABLE. and VT Camera,



6

Screw insertion 1 Point.
* Torque Value : $0.95 \pm 7\%$



※ Caution

Check for each connector connection

※ Caution

Be care of PBA damage.

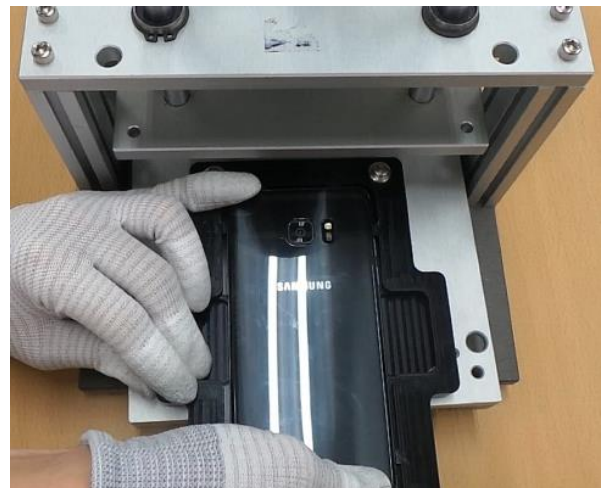
7

Assemble Rear and screw insertion 13 point
* Torque Value : $1.25 \pm 10\%$



8

Press Back Glass.
- Pressing force : 1 N
- Pressing time : 1 minute



※ Caution

Be care of PBA damage.

※ Caution

Be care of scratch Rear cover.

Confidential and proprietary-the contents in this service guide subject to change without prior notice

Distribution, transmission, or infringement of any content or data from this document without Samsung's written authorization is strictly prohibited.