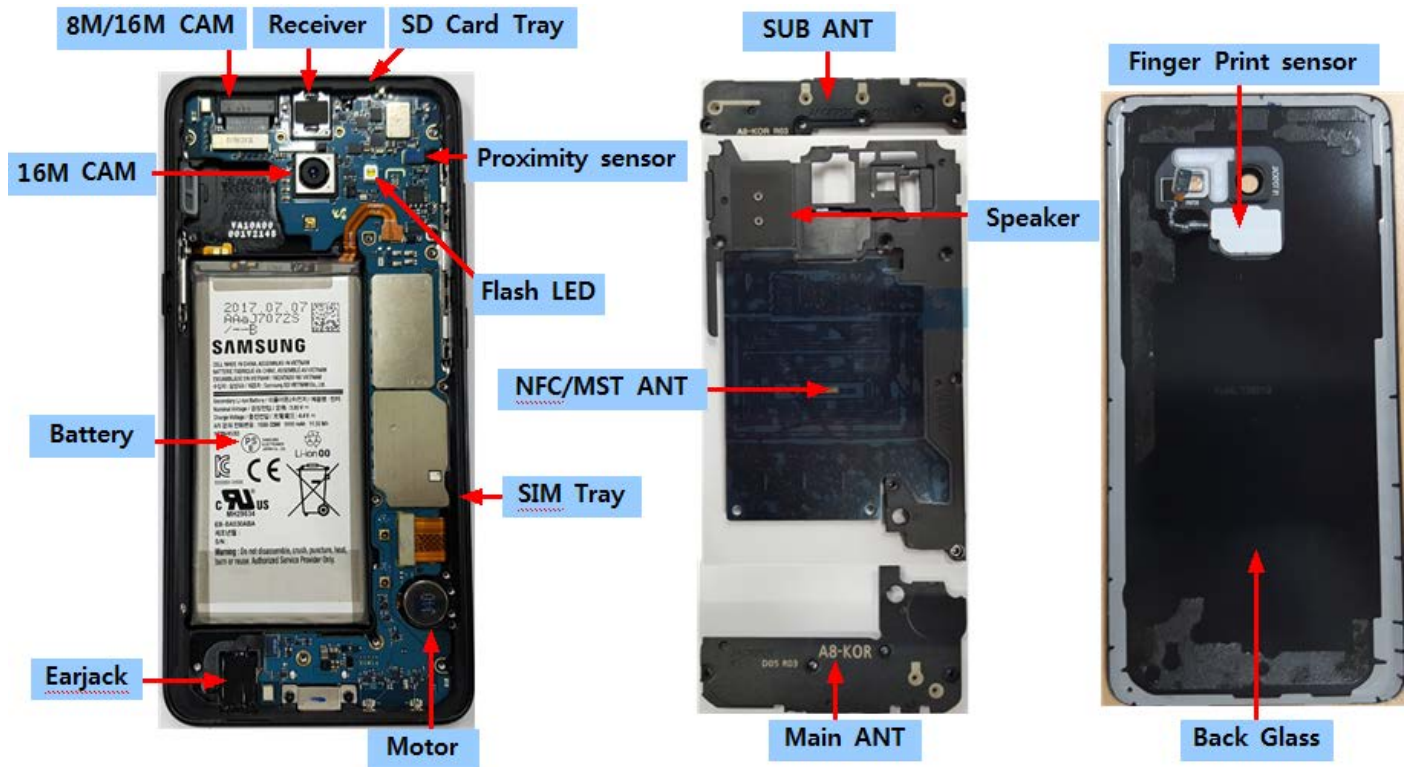



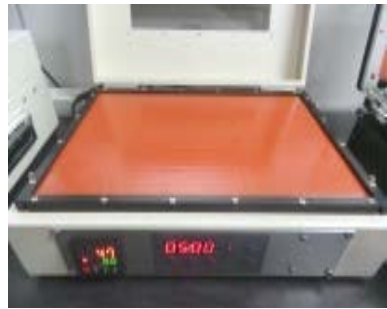

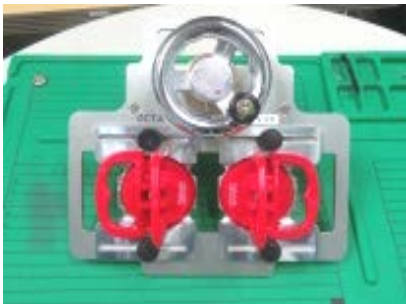
7. Level 2 Repair

7-1 Components on the Rear Case



7. Level 2 Repair

7-2. Pre-requisite


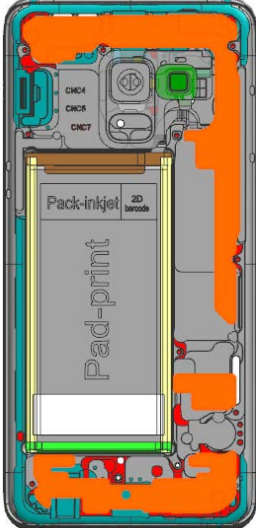

	
Tweezers / Disass'y Sticks / Screw Driver	Anti-static Gloves
	
Anti-static Mat	Hot Plate
	
A OCTA Disassembly Holder	OCTA Disassembly Upper
	
Ethyl Alcohol	Cotton Swab

삼성전자주식회사

이 문서는 삼성전자의 기술 자산으로, 허가 받은 사람만 사용할 수 있습니다.

7. Level 2 Repair

7-3 Parts which must be changed after repair

BOM description & part code	Image	Remarks
<p>A/S-SVC TAPE BG WP OUTER [GH81-15175A]</p>		
<p>A/S-SVC TAPE BG INNER [GH81-15176A]</p>		<p>Replace for Back Glass repair</p>
<p>TAPE DOUBLE FACE-BG WP FINGER DECO [GH02-15669A]</p>		<p>Replace for Back Glass Or Finger print sensor repair</p>


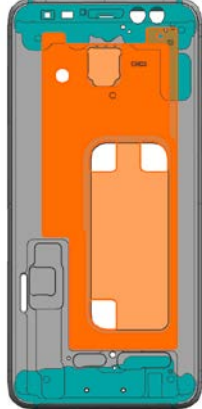
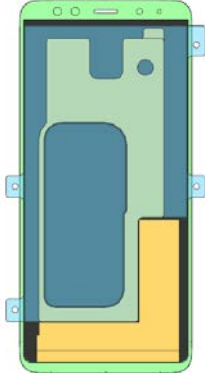
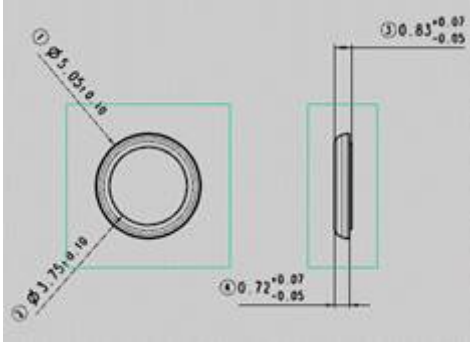


tamiraat.com منبع مقاله

삼성전자주식회사

이 문서는 삼성전자의 기술 자산으로, 허가 받은 사람만 사용할 수 있습니다.

7. Level 2 Repair

<p>WINDOW TAPE [GH81-15177A]</p>		<p>Replace for OCTA</p>
<p>SVC HR TAPE (Attached FRONT. Don't use JIG) [GH81-15178A]</p>		
<p>CU SHEET GH02-15948A</p>		
<p>ORING [GH81-15238A] (Need Replace When the dispensing is damaged)</p>		

삼성전자주식회사

이 문서는 삼성전자의 기술 자산으로, 허가 받은 사람만 사용할 수 있습니다.

7. Level 2 Repair

7-4. Disassembly

<div data-bbox="119 302 774 571" style="border: 1px solid black; padding: 5px;"> <p>1</p> <p>1) Put the device in the chamber or Hot plate as below heating condition</p> <ul style="list-style-type: none"> - SOC 68%↓: 70℃/10~20min - SOC 68%↑: 60℃/10~20min <p>※ Please confirm the heating condition released lastly, and follow it.</p> <p>2) Detach the Backglass</p> </div> <div data-bbox="143 649 782 1052"> </div>	<div data-bbox="813 302 1476 436" style="border: 1px solid black; padding: 5px;"> <p>2</p> <p>Disassemble SIM /SIM1,SIM2+Micro SD Card tray from device. Unscrew 14Points.</p> </div> <div data-bbox="805 470 1436 1030"> </div>
<p>※ Caution Be careful not to damage set and OCTA.</p>	
<div data-bbox="119 1153 774 1276" style="border: 1px solid black; padding: 5px;"> <p>3</p> <p>Disassemble the REAR. Rear TOP -> MID -> BOT By using guide hole disassemble Rear</p> </div> <div data-bbox="295 1366 590 1814"> </div>	<div data-bbox="813 1153 1476 1243" style="border: 1px solid black; padding: 5px;"> <p>4</p> <p>Unscrew 3 Points front PBA</p> </div> <div data-bbox="1005 1321 1276 1870"> </div>
<p>※ Caution Be care of damage to components.</p>	

7. Level 2 Repair

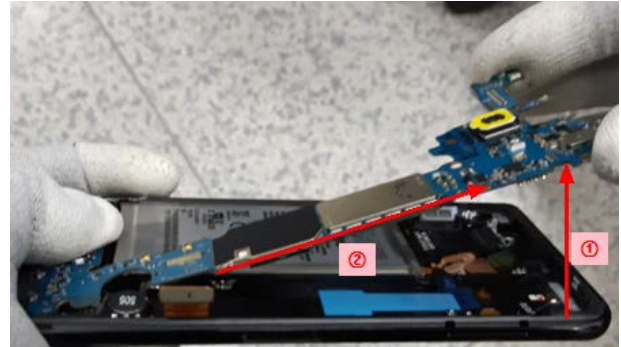
5

Disassemble connector 5 Points.



6

Disassemble PBA from Front.
(like ① ② image)



※ Caution

Be care of damage to connector

※ Caution

Be care of damage to side contact point

7

Disassemble another items

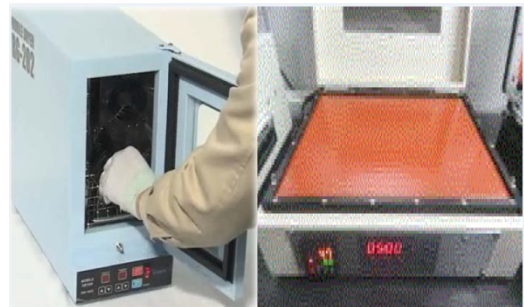


※ Caution

Be care of damage/ scratch

8

To separate the OCTA, heat hot chamber or hot plate
temperature : $70^{\circ} \pm 5$, time : 15 minutes



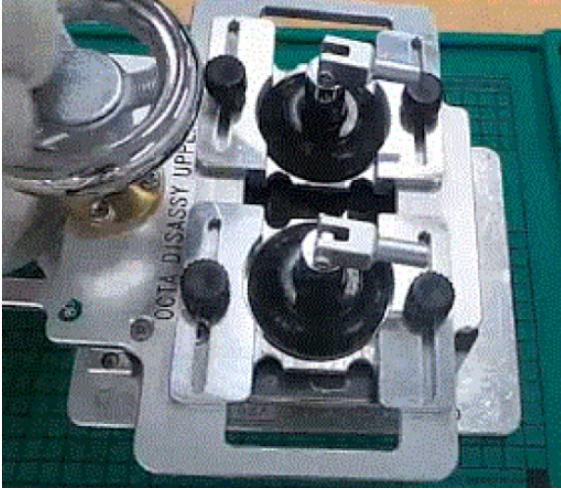
※ Caution

Be careful not to damage set and OCTA

7. Level 2 Repair

8

Separate the OCTA



※ Caution

Be careful not to damage set and OCTA

7. Level 2 Repair

7-5. Assembly

<div data-bbox="97 297 183 369" style="border: 1px solid black; padding: 5px; text-align: center; width: 40px; height: 30px; margin-bottom: 10px;">1</div> <div data-bbox="183 297 794 492" style="border: 1px solid black; padding: 5px;"> <p>Assembly Main CAM, RCV, Motor at PBA, Front Screw 1Point for fix earjack Torque :1.1 Kgf·cm</p> </div> <div data-bbox="97 504 794 1016"> </div>	<div data-bbox="801 297 893 369" style="border: 1px solid black; padding: 5px; text-align: center; width: 40px; height: 30px; margin-bottom: 10px;">2</div> <div data-bbox="893 297 1505 392" style="border: 1px solid black; padding: 5px;"> <p>Attach OCTA</p> </div> <div data-bbox="801 403 1505 1016"> </div>
<div data-bbox="97 1016 794 1097" style="background-color: yellow; padding: 5px;"> <p>※ Caution Be care of strong pushing</p> </div>	<div data-bbox="801 1016 1505 1097" style="background-color: yellow; padding: 5px;"> <p>※ Caution Be care of FPCB damage</p> </div>
<div data-bbox="97 1097 183 1176" style="border: 1px solid black; padding: 5px; text-align: center; width: 40px; height: 30px; margin-bottom: 10px;">3</div> <div data-bbox="183 1097 794 1243" style="border: 1px solid black; padding: 5px;"> <p>Assemble PBA on Front.</p> </div> <div data-bbox="97 1254 794 1825"> </div>	<div data-bbox="801 1097 893 1176" style="border: 1px solid black; padding: 5px; text-align: center; width: 40px; height: 30px; margin-bottom: 10px;">4</div> <div data-bbox="893 1097 1505 1254" style="border: 1px solid black; padding: 5px;"> <p>Assemble connector of sub CAM</p> </div> <div data-bbox="801 1265 1505 1825"> </div>
<div data-bbox="97 1825 794 1892" style="background-color: yellow; padding: 5px;"> <p>※ Caution Be care of FPCB damage.PBA Damage</p> </div>	<div data-bbox="801 1825 1505 1892" style="background-color: yellow; padding: 5px;"> <p>※ Caution Be careful not to FPCB damage and tilt, strong pushing</p> </div>

삼성전자주식회사

이 문서는 삼성전자의 기술 자산으로, 허가 받은 사람만 사용할 수 있습니다.

7. Level 2 Repair

5

Assemble Battery connector and Screw
4Point



6

Screw 3Point of PBA
(Torque:1.2 Kgf-cm±7%)



※ Caution

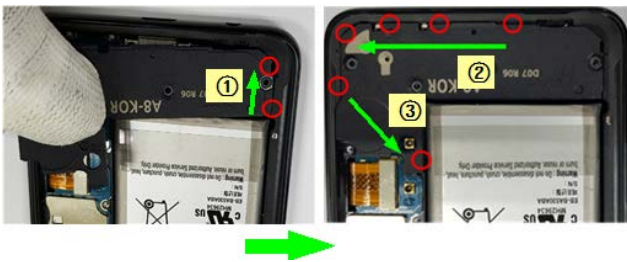
1) Be care of connector damage

※ Caution

Be care of PBA damage

7

Assemble Rear BTM



8

Assemble Rear MID



※ Caution

Be care of REAR damage

※ Caution

Be care of REAR damage

삼성전자주식회사

이 문서는 삼성전자의 기술 자산으로, 허가 받은 사람만 사용할 수 있습니다.

7. Level 2 Repair

9

Assemble Rear TOP



10

SCREW 14POINT and
Insert SIM1, SIM2+Micro SD Card TRAY
(Torque :1.35 Kgf•cm)



※ Caution
Be care of REAR damage

※ Caution
Be care of REAR scratch

11

Attach finger sensor in Rear.



※ Caution
Be care of REAR scratch

12

Attach Back Glass



※ Caution
Be care of REAR scratch

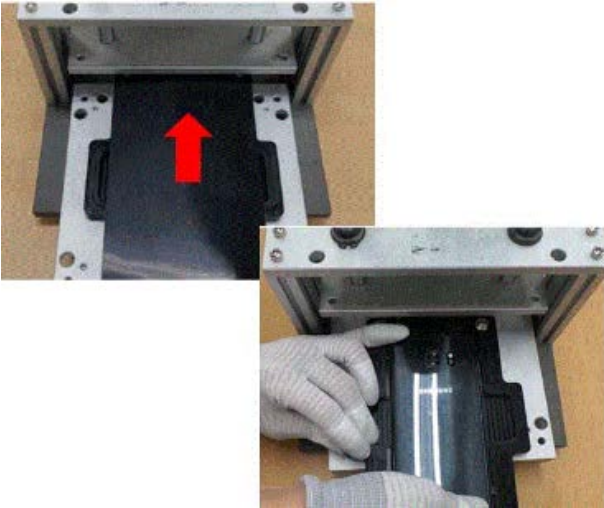
삼성전자주식회사

이 문서는 삼성전자의 기술 자산으로, 허가 받은 사람만 사용할 수 있습니다.

7. Level 2 Repair

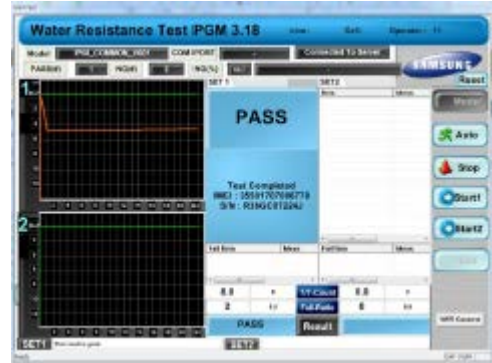
13

Press the device using pressing jig
 - Force : 1N
 - Time : 1minute



14

Test WRT



※ Caution

Please confirm the pressing condition released lastly, and follow it.

※ Caution

Be care of REAR scratch

15

If WRT test happen fail, check the reason
 (sealing or etc)

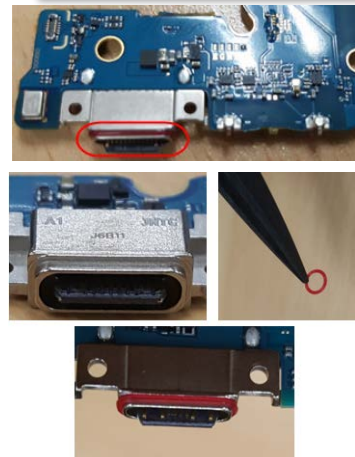


※ Caution

Be care of REAR scratch

16

The reason is IF connector,
 Disassemble PBA from Front and change
 O-Ring



※ Caution

Be care of PBA damage

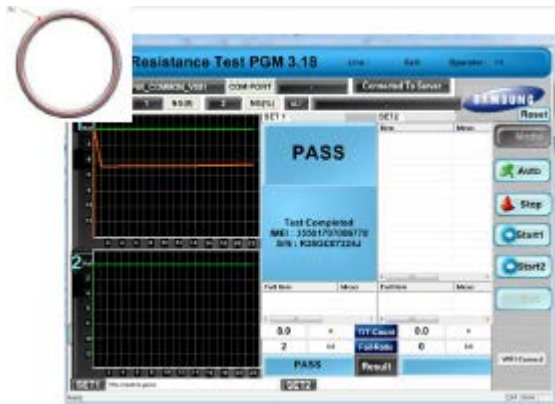
삼성전자주식회사

이 문서는 삼성전자의 기술 자산으로, 허가 받은 사람만 사용할 수 있습니다.

7. Level 2 Repair

17

test WRT.



※ Caution
Be care of REAR scratch